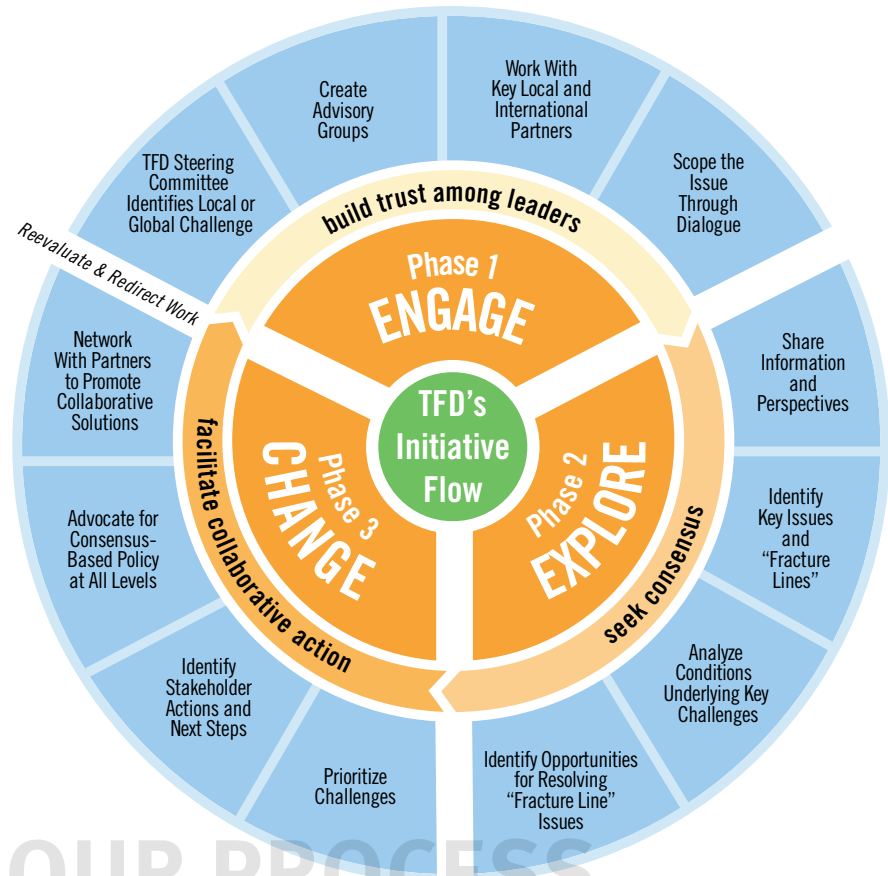


THE
FORESTS
DIALOGUE

ENGAGE! EXPLORE! CHANGE!



WELCOME TO THE FORESTS DIALOGUE (TFD), a platform and process for multi-stakeholder discussion and collaboration on the most pressing local and global issues facing forests and people. Our primary tool – **focused dialogue** – is simple and powerful:

We first **ENGAGE** a diversity of interests to foster relationships and build trust around contentious forest issues, or ‘fracture lines’;

We then **EXPLORE** the issues at hand and craft a shared understanding of the objectives, challenges and opportunities ahead;

We ultimately seek **CHANGE** through consensus-based collaboration aimed at immediate action and long-term progress.

OUR PROCESS

www.theforestdialogue.org





OUR CHALLENGE

CONFLICTS RELATED TO FORESTS are complex and persistent, ranging widely across scales, timeframes, players, and goods and services. Particularly challenging are the inequalities in power, resources and capacity of those with a stake in the forests, which can create fundamental stumbling blocks to finding solutions. A lack of solutions threatens a host of dire environmental, social, and economic consequences: irreversible change to global climate systems, a biodiversity extinction crisis, the exhaustion of resources and collapse of industry sectors, and continued impoverishment of many whose livelihoods depend on forests. TFD works to reduce conflict among forest stakeholders by engaging divergent actors in the pursuit of common action.





OUR COMMITMENT

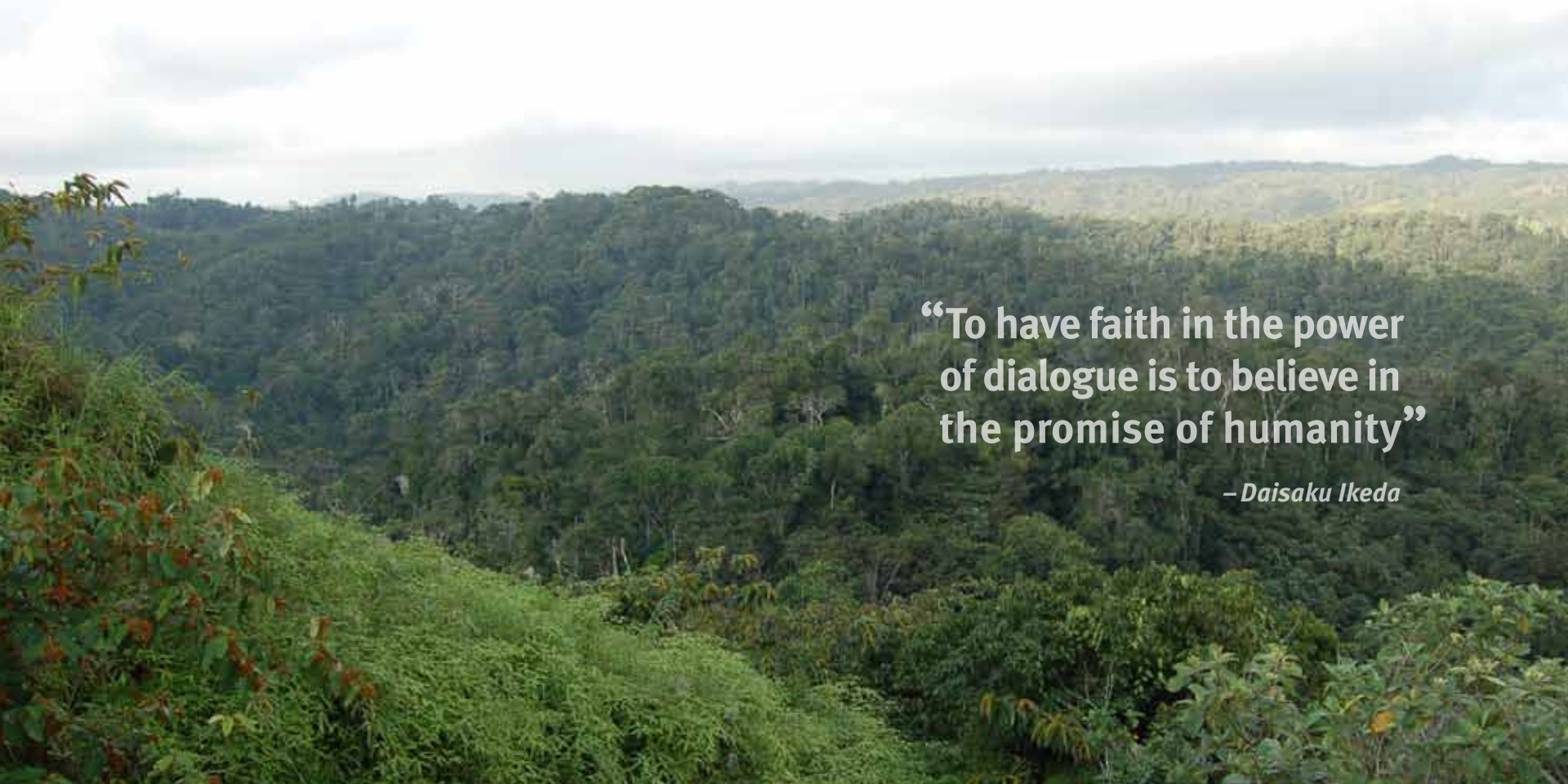
THE PURPOSE AND MISSION OF TFD are designed to confront a broad and evolving landscape of global forest issues.

PURPOSE: *Better forests, improved livelihoods.* To contribute to sustainable land and resource use, the conservation and sustainable management of forests, and improved livelihoods by helping people engage and explore difficult issues, find collaborative solutions, and make positive changes.

MISSION: *Dialoguing can bring change.* To pursue our purpose through constructive dialogue processes among all key stakeholders, based on mutual trust, enhanced understanding and commitment to change. Our dialogues are designed to build relationships and to spur collaborative action on the highest priority issues facing the world's forests.

www.theforestdialogue.org



A wide-angle photograph of a lush, green tropical forest. The foreground shows a dense thicket of green plants and trees. The middle ground is dominated by a vast expanse of dense forest, stretching towards the horizon. The sky is filled with soft, grey clouds, creating a diffused light over the scene. The overall mood is serene and majestic.

**“To have faith in the power
of dialogue is to believe in
the promise of humanity”**

– Daisaku Ikeda



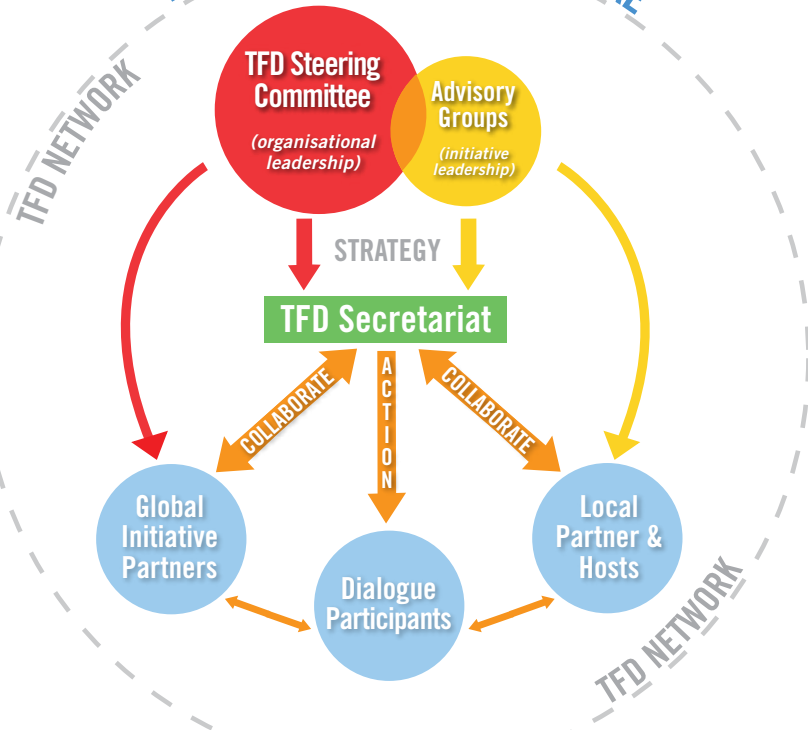
OUR DIALOGUES

TFD DEVELOPS AND FACILITATES

multi-stakeholder dialogue-based initiatives on issues key to the forest sector. We build a dynamic, bottom-up form of dialogue to ensure that stakeholders' concerns are well represented. TFD uses techniques that range from intimate, small-group dialogues to large forums involving hundreds of participants. Direct engagement with issues on the ground at field sites is an important component of many dialogue processes. At the conclusion of each dialogue and initiative, we produce summary publications, form coalitions among key actors, and meet with decision-makers to move from ideas to action.



TFD's ORGANISATIONAL STRUCTURE



TFD FORMED IN 2000 under the guidance of a dedicated group of civil society/private sector leaders who care about forests. Our diverse and representative Steering Committee agrees on each initiative and leads its development. A small and experienced Secretariat staff based at Yale University coordinates and manages the daily operations of TFD, using its extensive network of forest-sector leaders and community members to provide input and support for each ambitious initiative. Finally, TFD relies on a broad donor base to support all of its operations.

OUR ORGANISATION

www.theforestdialogue.org





OUR INITIATIVES

From 2000-2010, **TFD** developed 10 different initiatives, convened over 40 dialogues and engaged more than 2000 individuals. We encourage you to explore our work online at www.theforestdialogue.org



TFD STEERING COMMITTEE MEMBERS - 2016

LENNART ACKZELL

JENNIFER BAARN

CHRIS BROWN

CHRIS BUSS *TFD Co-Leader*

JOJI CARIÑO

AMITY DOOLITTLE

GARY DUNNING

CHRIS KNIGHT

WERNER KORNEXL

SKIP KRASNY *TFD Co-Leader*

VICTOR LOPEZ

ANTTI MARJOKORPI

CHRIS MEYER

EVA MULLER

IVONE NAMIKAWA

CÉCILE NDJEBET

ISILDA NHANTUMBO

MILAGRE NUVUNGA

MIRIAM PROCHNOW

MATTHEW REDDY

AUGUSTO ROBERT

TINT LWIN THAUNG

Federation of Swedish Family Forest Owners - *Sweden*

SAGCOT - *Tanzania*

OLAM - *United Kingdom*

International Union for Conservation of Nature (IUCN) –
Switzerland

Forest Peoples Programme (FPP) – *United Kingdom*

Yale University – *United States*

The Forests Dialogue (TFD) – *United States*

PricewaterhouseCoopers – *United Kingdom*

Profor - World Bank - *United States*

Kimberly-Clark – *United States*

Ut'z Che' - *Guatemala*

Stora Enso – *Finland*

Environmental Defense Fund - *United States*

Food and Agriculture Organization (FAO) – *Italy*

Klabin – *Brazil*

African Women's Network for Community Management
of Forests (REFACOF) – *Cameroon*

International Institute for Environment and Development
(IIED) - *United Kingdom*

MICAIA Foundation – *Mozambique*

Apremavi – *Brazil*

World Business Council for Sustainable Development
(WBCSD) - *Switzerland*

CMPC - *Chile*

RECOFTC -The Center for People and Forests – *Thailand*

OVERVIEW OF TFD'S INITIATIVES IN 2016

LAND-USE DIALOGUES (LUD): The 'landscape approach' has been advocated as an inclusive, adaptive approach to managing and allocating land to achieve multiple objectives. Despite strong and renewed emphasis on the 'landscape approach' from the conservation and development communities, few examples of successful implementation exist. TFD's LUD Initiative aims to create ongoing stakeholder engagement platforms in landscapes with actual or high risk of deforestation for the purpose of gathering knowledge and leading processes to enable responsible business, improved governance and inclusive development that will strengthen the implementation of landscape approach concepts.

SUSTAINABLE WOOD ENERGY (SWE): Using wood as fuel for heating and cooking is one of humankind's oldest practices. An estimated one-half of the world's population relies on wood-based biomass in the form of fuelwood and charcoal to meet their daily energy needs. Indeed, while traditional woody biomass use continues to be the dominant form of biomass energy, woody biomass is increasingly used on an industrial scale for heat and power, especially as developed countries seek to increase renewable energy's share of the energy mix. TFD's Sustainable Wood Energy Initiative will examine the complex, multifaceted and multi-contextual use of woody biomass for energy globally, and its impacts on forests.

TREE PLANTATIONS IN THE LANDSCAPE (TPL): Tree plantations currently provide a third of the world's industrial wood, a proportion expected to increase significantly in coming decades. They also have great potential to deliver environmental services and social benefits. However, many aspects of tree plantations have been and remain controversial, with concerns that associated environmental and social costs often outweigh economic and other benefits. TFD's Tree Plantations in the Landscape (TPL) Initiative explores the evolving state of issues related to tree plantations and planted forests within the larger landscape context through engaging key stakeholder groups at the international, national, and local levels. The TPL Initiative will build and expand on TFD's previous Intensively Managed Planted Forests (IMPF) Initiative, conducted from 2005-2008.

UNDERSTANDING DEFORESTATION-FREE (UDF): The wave of recent 'deforestation-free' commitments from governments, major corporations and civil society groups has infused new hope into efforts to address the problem of deforestation. However, varied definitions, starting dates, implementation methodologies, and systems for verifying progress on these commitments have created confusion and delay for actors trying to realize deforestation-free pledges and frustration for those promoting and tracking movement toward meeting deforestation-free targets. TFD's UDF Initiative aims to develop a common understanding of key definitions, targets, and workable approaches for developing and effectively implementing deforestation-free commitments

LAND-USE DIALOGUES (LUD) INITIATIVE

INITIATIVE GOAL: Along with its partners, TFD has developed the LUD to address specific landscape challenges in key high risk geographies around the world. TFD's role in this initiative is as an engagement platform to gather knowledge and lead processes to enable responsible business, improved governance and inclusive development in landscapes at risk.

THE CHALLENGE: *Despite renewed emphasis on a landscape approach, there are few examples of successful implementation. Landscape initiatives have difficulty in engaging the private sector in particular, with private-sector stakeholders participating in less than 10% of African and 22% of Latin American landscape initiatives. Governments increasingly seek solutions to optimize land-use decision-making, while civil society seeks regular and collaborative engagement processes to discuss challenges that extend across individual organizational priorities and geographic regions.*

OBJECTIVES:

- Create an ongoing platform for engagement among all stakeholders in a specific landscape that will develop solutions to implement, test and reevaluate impact;
- Support policy making, and development assistance programming and implementation;
- Resolve conflicts and creation of new partnerships between and within the forest, agriculture and other sectors that have stakes in the identified landscape;
- Encourage global commodity supply chain initiatives, and support improved land use governance;
- Develop local ideas and activity plans for sustainable development to enable implementation of international initiatives and commitments.

OUTPUTS:

- Global partnership to address land-use issues;
- Establishment of several landscape specific platforms;
- Research and publications that describe actions and recommendations for ongoing engagement;
- Private sector commitments to reduce deforestation.

GOING FORWARD: TFD and its partners propose to convene dialogues in at least 4 pilot landscape sites (potential countries include Brazil, Indonesia, Mozambique and Tanzania).

SUSTAINABLE WOOD ENERGY (SWE) INITIATIVE

INITIATIVE GOAL: Sustainable Wood Energy Initiative aims to explore the complexities of achieving sustainable biomass for energy production across sectors and contexts, for both traditional and industrial use, through engaging a vast diversity of stakeholders.

THE CHALLENGE: *Using wood as fuel for heating and cooking is one of humankind's oldest practices. An estimated one-half of the world's population relies on wood-based biomass in the form of fuelwood and charcoal to meet their daily energy needs. While traditional woody biomass use continues to be the dominant form of biomass energy, woody biomass is increasingly used on an industrial scale for heat and power, especially as developed countries seek to increase renewable energy's share of the energy mix. If not managed sustainably, both forms of woody biomass consumption threaten forests globally.*

OBJECTIVES:

- Explore key topics such as: balancing sustainable management, biodiversity, climate change, and rising demand for woody biomass, societal expectations for this increase use of woody biomass at scale; context appropriate certification; creating a coherent framework for engaging with both traditional and industrial biomass use;
- Establish specific, practical, context-dependent ways forward on these priority issues;
- Link to and share learnings from related initiatives, inform and connect key audiences and influence policy and practice.

OUTPUTS:

- Background papers and summaries for each dialogue in the Initiative; TFD Review outlining the conclusions and recommendations from the full Initiative;
- Engagement with key stakeholders and opinion-makers with a set of best practices for sustainable biomass production and consumption.

PROCESS TO DATE: TFD convened a scoping dialogue in Montpellier, France in June of 2016.

GOING FORWARD: TFD and its partners propose to convene a series of field dialogue on various aspects of the biomass issue in various contexts around the world.

TREE PLANTATIONS IN THE LANDSCAPE (TPL)

INITIATIVE GOAL: TFD's TPL initiative builds upon TFD's previous IMPF Initiative (2005-2008) to explore the evolving state of issues related to tree plantations and planted forests within the larger landscape context through engaging key stakeholders at the international, national, and local levels.

THE CHALLENGE: *Planted forests, including tree plantations established for wood production, continue to grow in both extent and significance. Tree plantations currently provide a third of the world's industrial wood, a proportion expected to increase significantly in coming decades. They also have great potential to deliver environmental services and social benefits. However, many aspects of tree plantations have been and remain controversial, with concerns that associated environmental and social costs often outweigh economic and other benefits.*

OBJECTIVES:

- Explore the identified priority topics, including: Plantation forests in the context of the global development agenda; Design/implementation of plantation forests through the landscape approach; Approaches to enable good governance and inclusive development; Identifying key externalities; and Diversification of the composition of plantation forests;
- Establish specific, practical, context-dependent ways forward on these priority issues;
- Link to and share learnings from related initiatives, inform and connect key audiences and influence policy and practice.

OUTPUTS:

- Background papers and summaries for each dialogue in the Initiative; *TFD Review* outlining the conclusions and recommendations from the full Initiative;
- Press conferences coordinated with local media outlets, targeted outreach via social media to opinion-shapers, news articles reporting out on key messages, edited videos to be posted on TFD and partner websites, and webinars on the subject of TPL and on the dialogue concept.

PROCESS TO DATE: TFD convened a scoping dialogue in Durban, South Africa in September 2015.

GOING FORWARD: TFD and its partners propose to convene a series of field dialogues, beginning with a field dialogue in Chile in the first half of 2016.

UNDERSTANDING DEFORESTATION-FREE (UDF) INITIATIVE

INITIATIVE GOAL: Develop a common understanding of key definitions, targets and workable approaches for developing and effectively implementing deforestation-free commitments.

THE CHALLENGE: *Various definitions, starting dates, implementation methodologies, and systems for verifying progress have created confusion and delay for actors trying to realize deforestation-free pledges and frustration for those promoting and tracking movement toward meeting deforestation-free targets.*

OBJECTIVES:

- Explore commonly held views on what is meant by 'deforestation-free';
- Identify risks and opportunities associated with implementing deforestation-free policies;
- Establish specific, practical ways forward on key issues, and ensure preparedness to pursue them.

OUTPUTS:

- Background papers and summaries for each dialogue in the Initiative; *TFD Review* outlining the conclusions and recommendations from the full Initiative;
- Press conferences coordinated with local media outlets, targeted outreach via social media to opinion-shapers, news articles reporting out on key messages, edited videos to be posted on TFD and partner websites, and webinars on the subject of UDF and on the dialogue concept.

PROCESS TO DATE: TFD convened a scoping dialogue in New Haven, USA in October 2014 and a field-based dialogue in Pekanbaru, Riau, Indonesia in April 2015.

GOING FORWARD: TFD and its partners propose to convene 2 field dialogues to continue to apply the questions raised during the scoping dialogue to key geographies:

- Latin America
- Africa

The Forests Dialogue

360 Prospect Street
New Haven, Connecticut 06511 USA

+1 203 432 5966
www.theforestsdialogue.org
tfd@yale.org



Follow us on Twitter: [@forestsdialogue](https://twitter.com/forestsdialogue)



Like us on Facebook: [The Forests Dialogue](https://www.facebook.com/TheForestsDialogue)

