

Welcome to TFD's

Field Dialogue on Tree Plantations in the Landscape – Indonesia



12-16 June 2023
Kerinci and Pekanbaru, Indonesia

#TPLIndonesia



This Evening's Program

18:30 Welcome

- Anderson Tanoto – April
- Host Organizations
- Co-Chair and Participant Introductions
- Dialogue Ground Rules

19:30 Background Paper

20:15 Field Visit Overview

21:00 Adjourn



Tree Plantations in the Landscape – Indonesia

TPL Indonesia Advisory Group

Maurem Alves - Klabin

Fitrian Ardiansyah - IDH

Aditya Bayunanda - WWF-Indonesia

Marcus Colchester – Forest Peoples Program

Gamma Galudra - RECOFTC

David Ganz - RECOFTC

Paul Hartmarn - World Bank

Tomi Haryadi - WRI Indonesia

Lucita Jasmin - APRIL

Ivone Namikawa - Klabin

Harry Oktavian - Bahtera Alam

Nigel Sizer - APRIL

Dialogue Coordination and Support

- **APRIL**
- **Bahtera Alam**
- **Forest Peoples Program**
- **RECOFTC**
- **The Forests Dialogue**
- **WWF**

Dialogue Co-Chairs



Aditya Bayunanda – WWF Indonesia

Marcus Colchester – Forest Peoples Program

Lucita Jasmin – April

Rulita Wijayaningdyah – Kahutindo



*+ Support from the TFD Team
(Gary, Liz, Ismini and Violet)*

Introductions

Name

Organization

Location



Overview of The Forests Dialogue





The Forests Dialogue's Origins

Background

- Established in 2000 by NGO and Business Leaders;
- To reduce conflict among forest stakeholders;
- Create an independent, international platform and process to discuss key SFM and conservation issues;
- Build mutual trust, enhanced understanding and commitment to change.

TFDs “Dialogic Change” Model



1. **‘ENGAGE’**: Identify key issues, build trust, share perspectives and information.

2. **‘EXPLORE’**: Seek consensus about challenges and opportunities to solve a forest-related ‘fracture-line’.

3 **‘CHANGE’**: Promote and facilitate actions that lead to solutions, with impact in policy and on the ground.



TFD's Current Initiatives

- Tree Plantations in the Landscape
- Land Use Dialogues
- Bioenergy from Forests
- Ecosystem Restoration
- Forests and Climate
- Climate Positive Forest Products

Dialogue Ground Rules

TFD Operates under the Chatham House Rule

"Participants are free to use the information received, but neither the identity nor the affiliation of the speaker(s), nor that of any other participant, may be revealed".

- The "Spirit" of dialogue
- Practice active listening
- Participate as individual
- Take space, make space
- Help define and own the outcomes



An aerial photograph showing a landscape with a river, forest, and agricultural fields. The river flows from the top center towards the bottom. On the left side of the river, there is a dense forest. On the right side, there are large, rectangular agricultural fields, likely rice paddies, which are green. The sky is blue with some white clouds. The text "TFDs Tree Plantations in the Landscape (TPL) Initiative" is overlaid in the center of the image.

TFDs Tree Plantations in the Landscape (TPL) Initiative

#TPLIndonesia



TFDs Initiatives on Planted Forests

Intensively Managed Planted Forests ('05-'08)

Key Objective: Reduce conflict; address social issues; answer 'if, then' question

Process: Scoping; Indonesia; China; Brazil; South Africa (250+ participants)

Impact: "Best Practice"; Voluntary Guidelines; NGP Process; Policy on Inclusion

Tree Plantations in the Landscape ('15-current)

Key Objective: Understand how "improved" plantations fit in a diversified landscape

Process (thus far): Scoping, Chile, Brazil, NZ





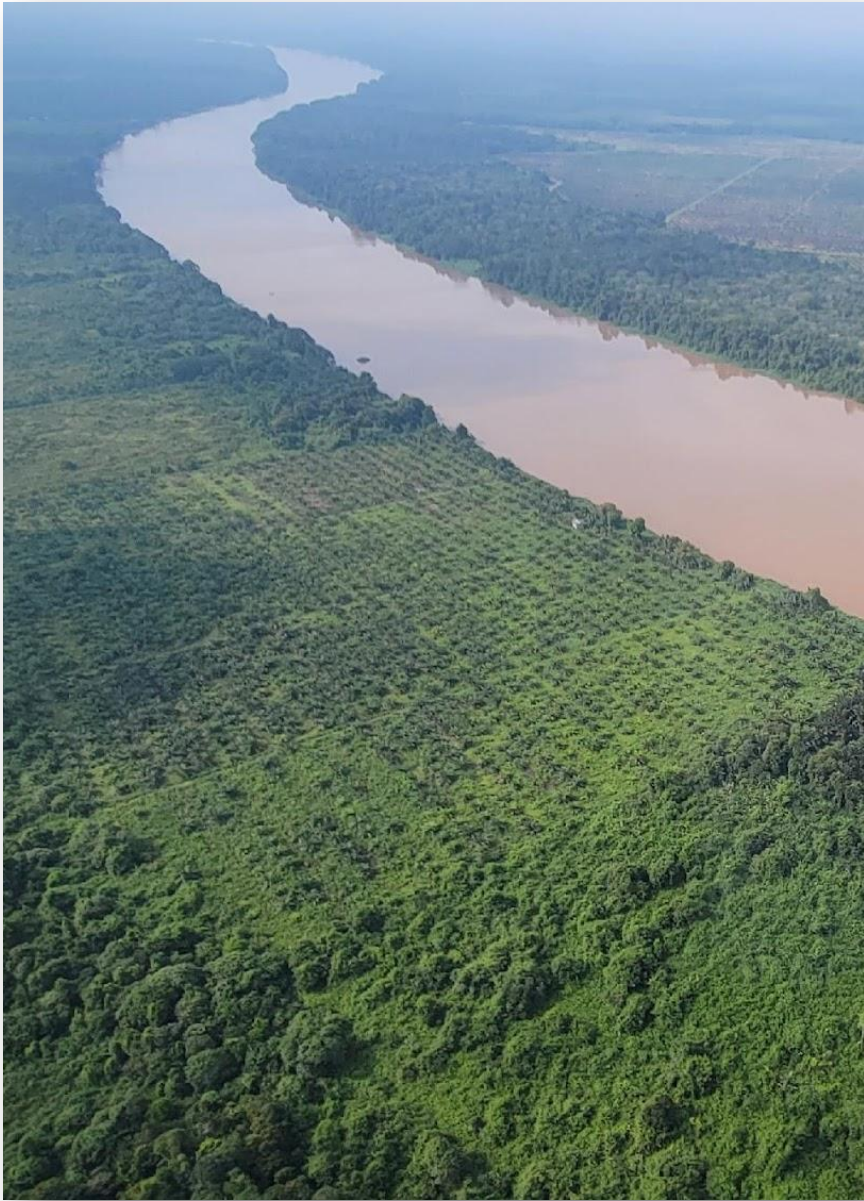
Current Identified Challenges

- How to meet growing demand on limited land-base;
- Recognition/support of formal and informal rights and access of Indigenous Peoples and forest-based communities;
- Lack of agreement/understanding impacts/benefits of intensification vs. extensification;
- Weak governance and limited development in key regions;
- Reliance on exotic monocultures and lack of plantation models;
- Uncertainty over impact of new technologies.



TPL Initiative Objectives

- Consider the design and implementation of plantation forests in the context of jurisdictional and landscape approaches;
- Review approaches to enable good governance and inclusive development and understand the potential of plantation forests to contribute to the global development agenda;
- Identify key externalities associated with the development and management of plantation forests;



TPL Initiative Objectives

- Learn about and encourage adoption of new practical solutions to specific contextual challenges (ie, peatland management, land tenure and dispute resolution, social forestry, restoration etc.);
- Explore the diversification of the forms and species composition of plantation forests; the sustainability of plantation forestry systems; and access to and use of new technologies.

[#TPLIndonesia](#)



Featured Videos



For More On TFD:

TFD Videos



Available at: www.youtube.com/user/TheForestsDialogue

TFD Documents and Publications



Available at: www.theforestsdialogue.org



Follow us on Twitter: [@forestsdialogue](https://twitter.com/forestsdialogue)



Like us on Facebook: [the forests dialogue](https://www.facebook.com/forestsdialogue)



Email us at: info@theforestsdialogue.org

TFD Address and Phone

The Forests Dialogue

Yale University

360 Prospect Street

New Haven, CT, USA 06511

+1 203 432 5966





Terima kasih!

#TPLIndonesia