

# FORESTRY DIALOGUE

## Yucatan Peninsula and the REDD+ Mechanism

- **Surface: 195.9 millions of de hectares.**
- **140 Millions of hectares in forestry surface.**
- **22 millions of hectares of Protected Areas to achieve the equivalent of ( 11.13 % of the surface of the national territory.)**



### Region Yucatan Peninsula

**Campeche, Quintana Roo and Yucatan**

**13.9 millions of hectares and it corresponds to 7.1 % of the country's surface.**

**From the total of its territory, 11% is Natural Protected Area.**

# LAND PROPERTY IN MEXICO

Types of property:

- i. Community property**
- ii. “Ejido” property**
- iii. Private Property**

More than half of the country’s surface is social property: 30,000 ejidos and communities.

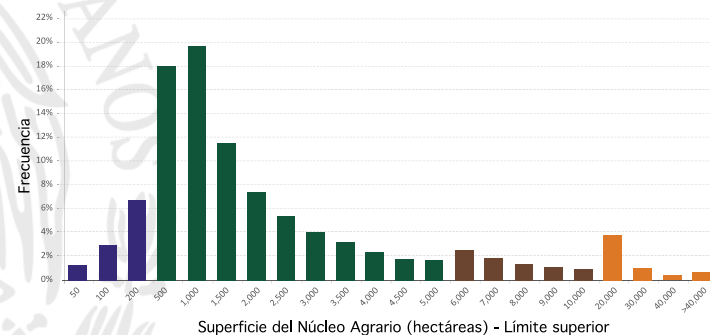
The basic spatial unit for decision making on land use, the productive activities and the management of resources are linked to the type of organization between the leaders of the ejidos and the communities and the people that lives or works in the agrarian nucleus.

# LAND PROPERTY IN MEXICO

## Clasificación de núcleos agrarios

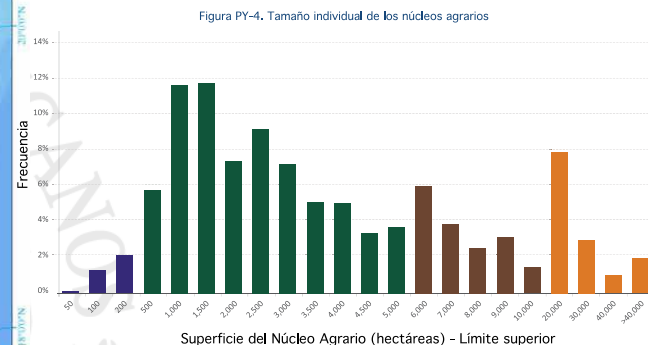
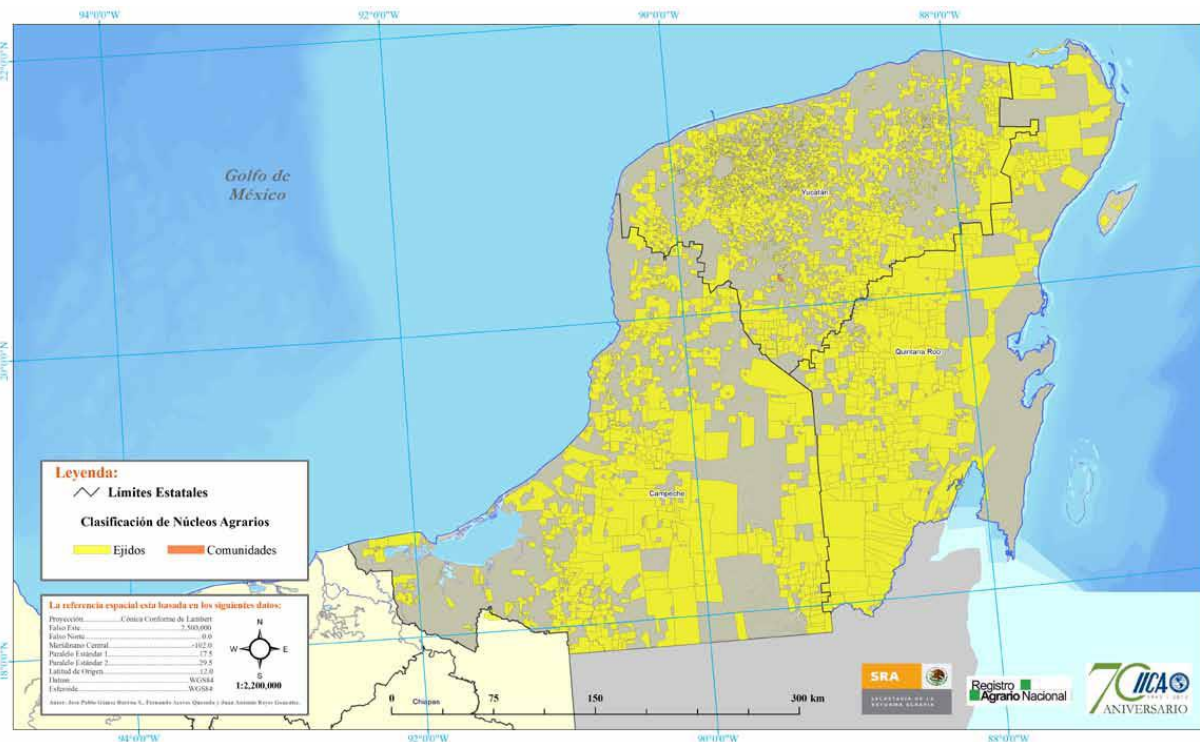


Figura MX-2. Tamaño individual de los núcleos agrarios del país





# LAND PROPERTY IN THE PENINSULA



Elaboración propia con datos de RAN (2012)

Yucatan Peninsula (Yucatan, Campeche, Quintana Roo)

1,350 ejidos and communities.

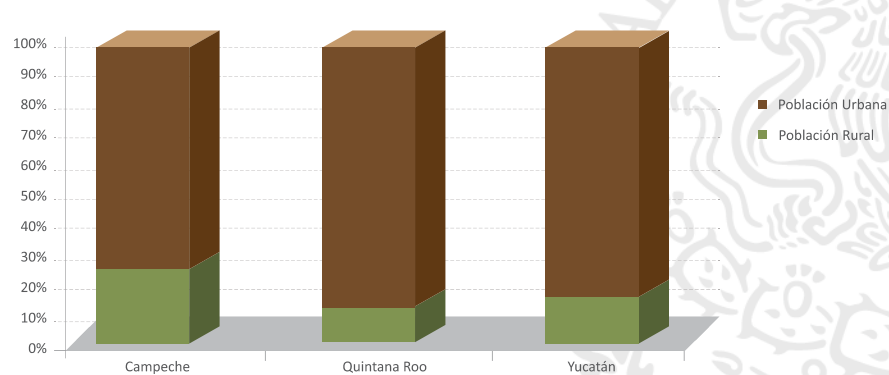
Surface in community property and ejido property: 79 millions of hectares.

Percentage of the surface in communal or ejidal property: 7.9 millions of hectares.

Percentage of the territory in community or ejidal property: 56%

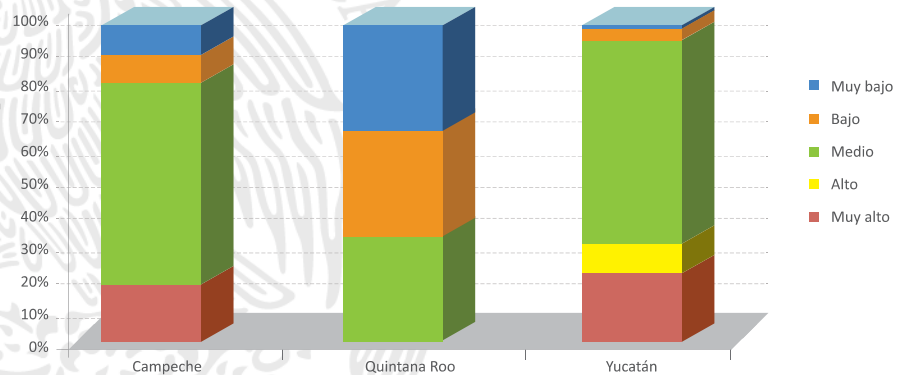
- The Yucatan Peninsula has a population of **4,1 millions** which represent 4% of the national total.
- The majority of the population (83%) lives in urban areas and only 17% live in rural areas.

Figura PY-1. Proporción de población urbana y población rural



Elaboración propia con datos de INEGI (2010)

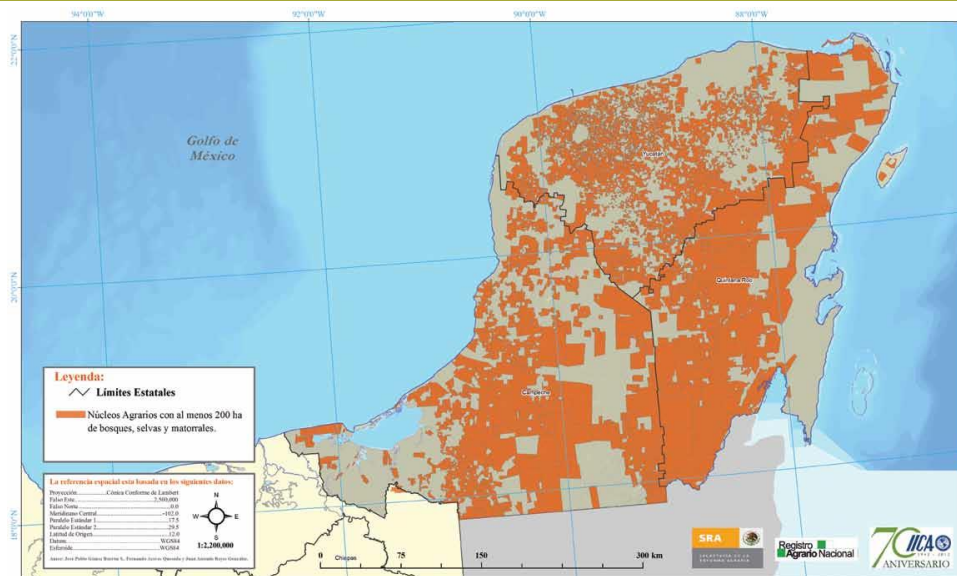
Figura PY-2. Marginación por municipio



Elaboración propia con datos de CONAPO (2010)

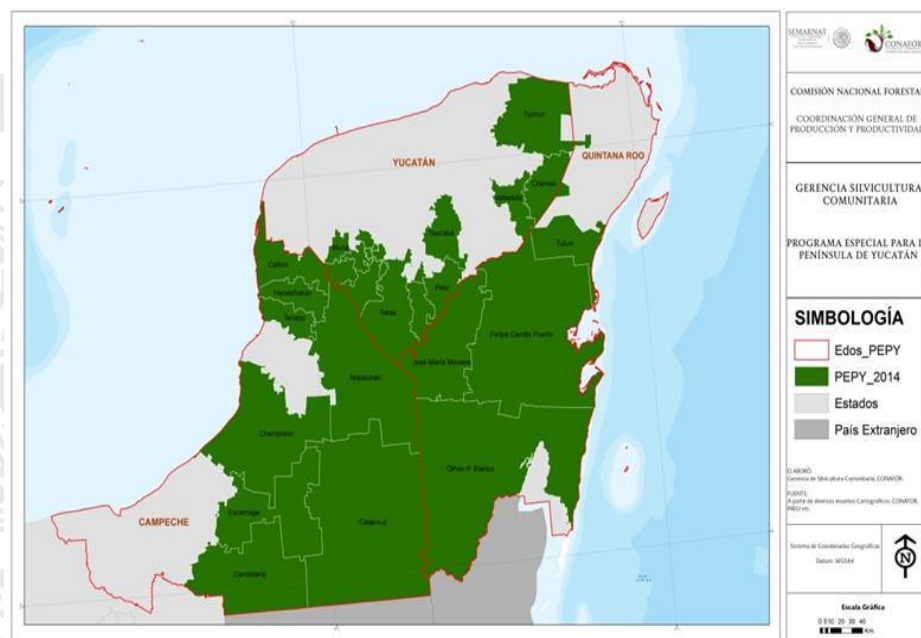
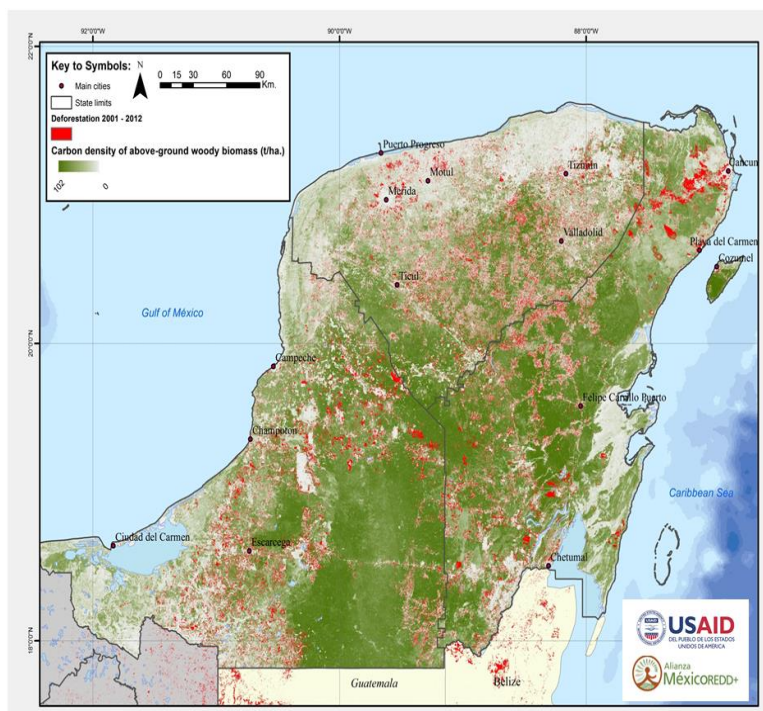
Municipalities according to degrees of marginalization: High 20%, Very High 8%, 62% have a medium degree of marginalization, 6% is low and 4 % Very Low.

Núcleos agrarios con al menos 200 hectáreas de bosques, selvas y matorrales



Federal Entity	Agrarian centers		
	Number	Surface (ha)	State proportion
Campeche	354	2,324,485	41%
Quintana Roo	275	2,444,136	55%
Yucatán	595	1,697,545	43%
<b>Total</b>	<b>1,224</b>	<b>6,466,165</b>	<b>46%</b>

## Special Program of “Early REDD+ Measures” in the Yucatan Peninsula





## MEXICO'S VISION ON REDD+

### Problem

- Both deforestation and degradation are complex issues,
- It is not a simple cause-effect relation.
- Multiple causes external to the forestry sector.



### Solution

- Integral and multiple level interventions,
- Making an impact on direct and underlying causes.
- Developing integral frameworks of land planning and management, that include the different actors in a collaborative way.

## Objectives

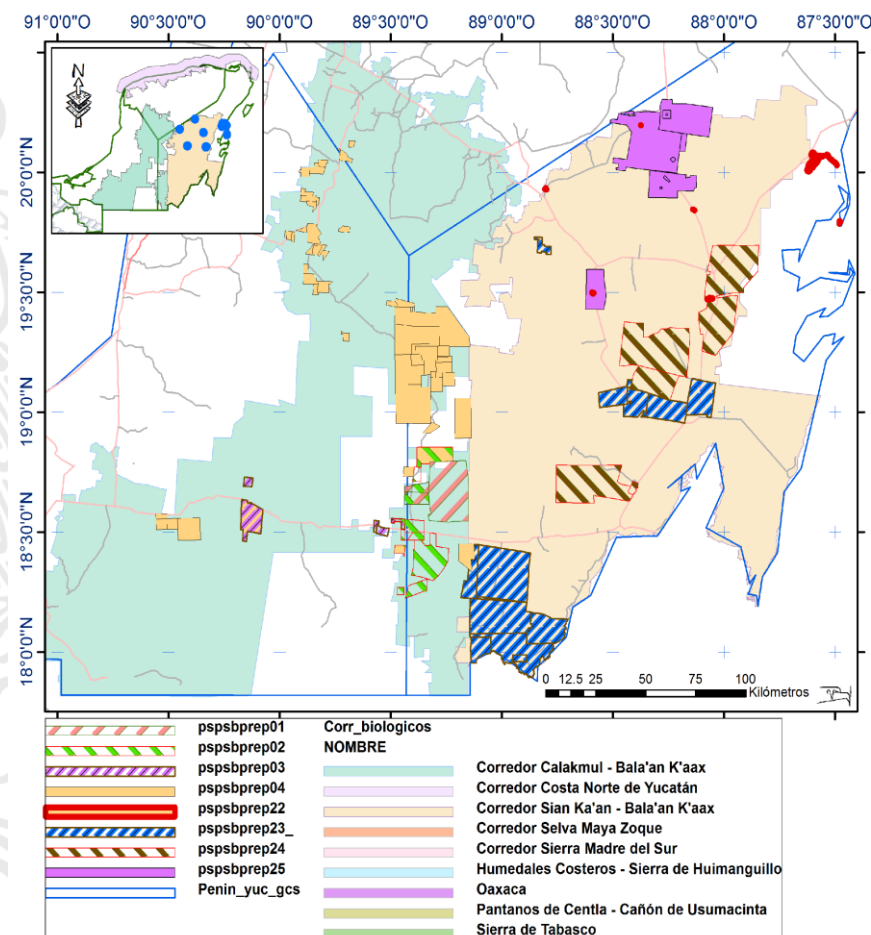
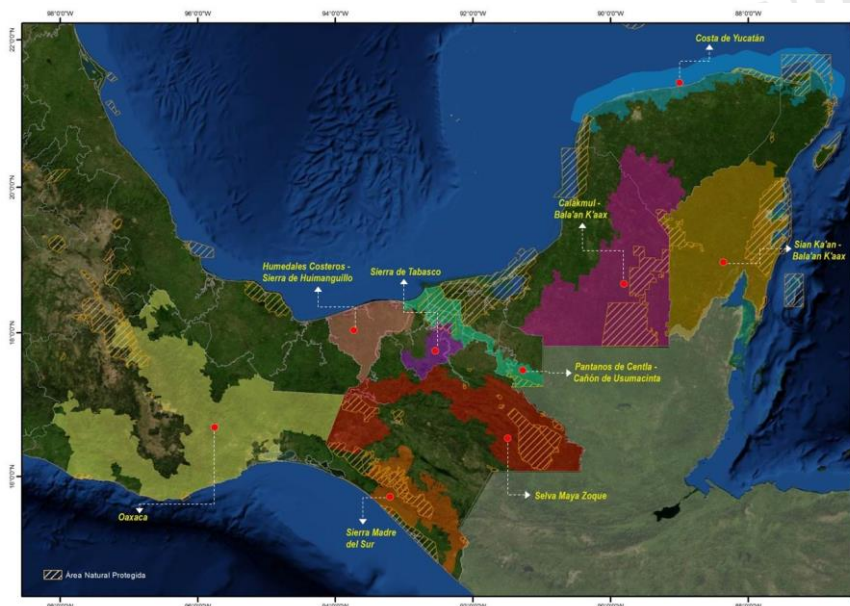
1. To identify production and management alternatives of forestry resources.
2. To recover deforested and degraded areas.
3. To strengthen management capacities in forestry communities.
4. To develop and consolidate rural development processes.
5. To boost innovative productive frameworks that guarantee the provision of food, work on the restoration of degraded areas, diversify production, connect ecosystems and conserve biodiversity.

## Strategy lines:

- \*Support forestry communities in the sustainable management of forests.
- \*Boost the connection among CONAFOR's actions with other institutions.

Early REDD+ Area	Type of action	Type of support
Yucatan Peninsula	Land planning	Land community organizing
	Conservation	Payments for the improvements of service providing in permanent bodies of water.
	Forestry management	Promotion of forestry regeneration in tropical areas.
	Boost to diversified uses of the forest	Maintaining and establishing technology packages of agro-forestry, silvo-pastoral and "ahuacal" management.

## Biological Corridors and Sustainable Productive Systems and Biodiversity



Fuente: Elaboración propia con base en datos de INEGI y CONABIO

## Sustainable Productive Systems and Biodiversity.

- **Objective:** To protect and conserve the biodiversity by improving sustainable management practices in the productive scenery of biological corridors.
- **Component 1.** Productive sustainable systems and biodiversity conservation. Focused in incorporating friendly practices towards biodiversity.
- **Component 2.** Producer's Organizations and biodiversity friendly market initiatives.
- **Component 3.** Support the construction of bio-seals and promote south-south cooperation.
- **Component 4.** Monitoring.





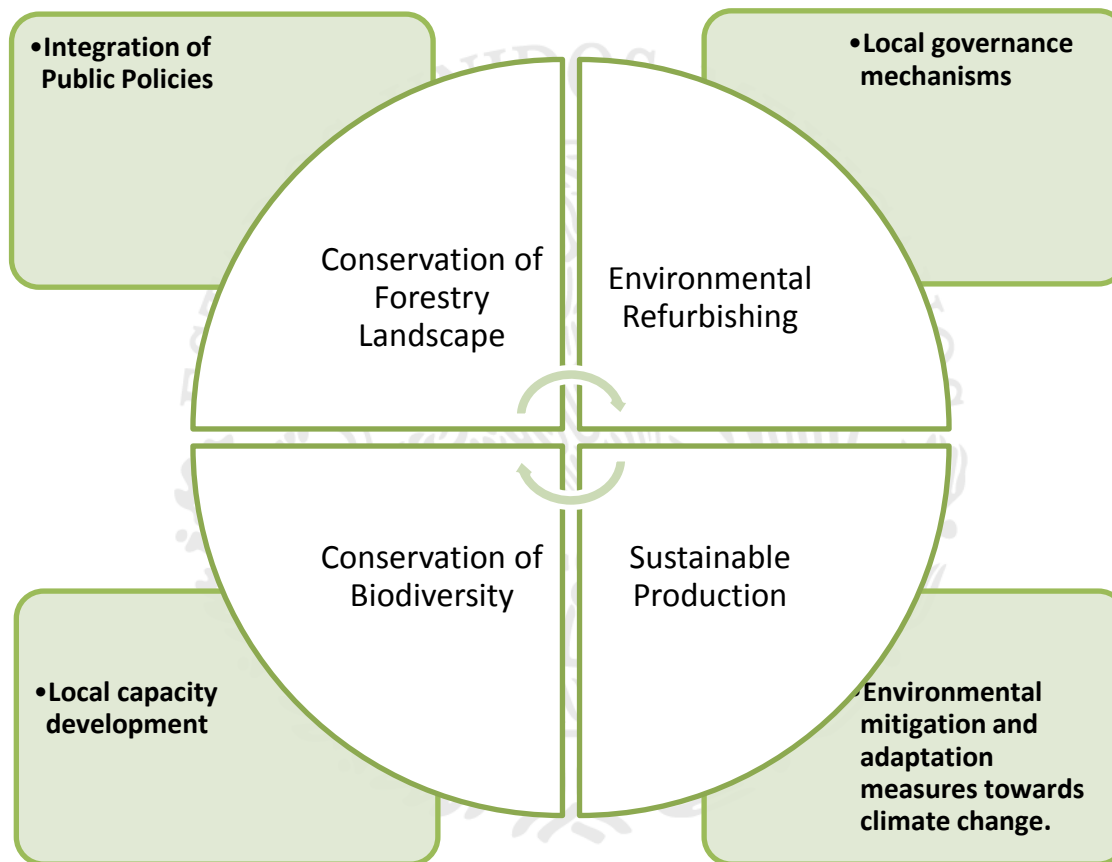
**Successful experiences link the conservation of biodiversity to development.**

**An alternative mode of rural development in zones prioritized by their biological wealth.**

**Special management program in High Biodiversity Zones.**



# Territorial Management

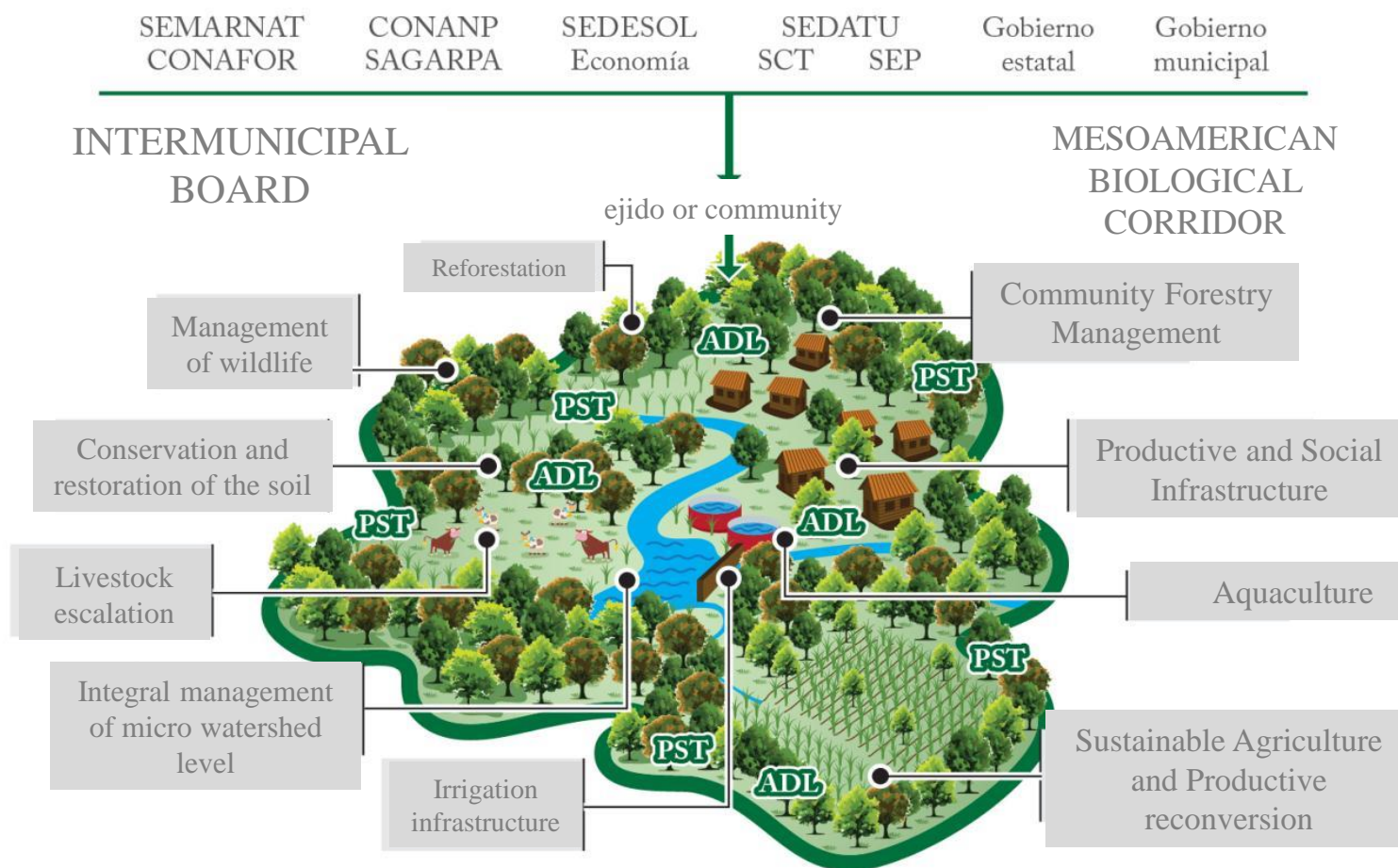


## REDD+ IN MEXICO

- Integrate public policies that advance **rural sustainable development**.
- Include and strengthen the **community management** of forests and the conservation of its biodiversity.
- Guarantee an integrated management of the land.

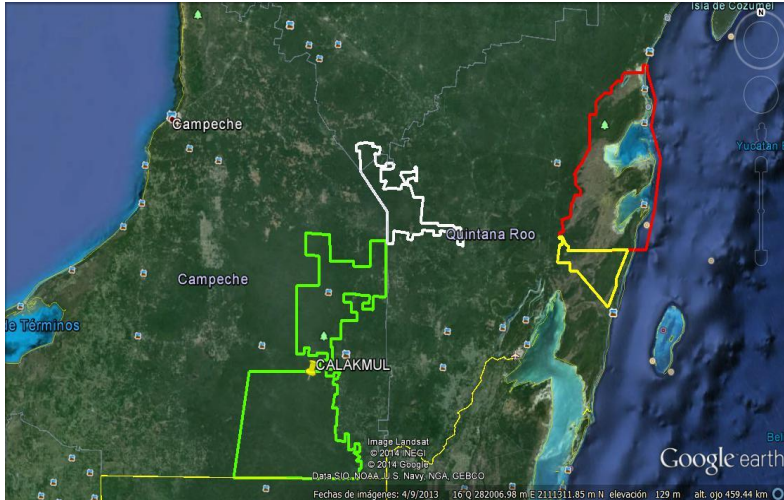


# INTEGRATED MANAGEMENT OF THE LAND

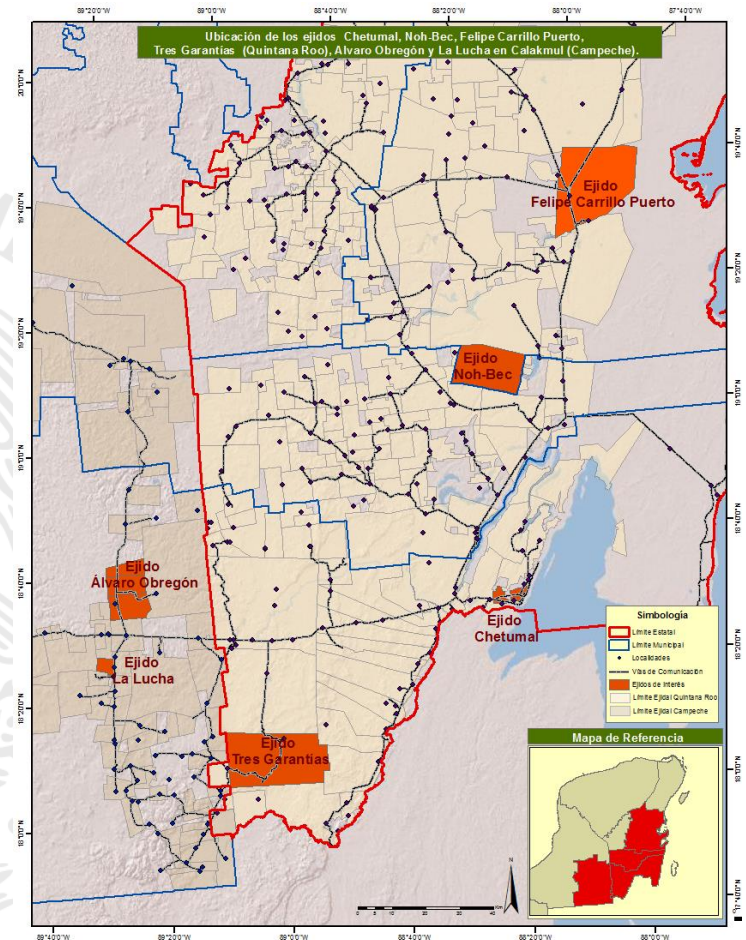




## Communities to visit



- Biosphere Reserve of Calakmul
- Coal producers in Calakmul
- Pepper producers in Calakmul
- Beekeepers net in Calakmul
- Beekeepers of Calakmul-Hopelchén
- Communities Noh Bec and Felipe Carrillo Carrillo.
- Social enterprise Chiza.



## REDD+ AS AN OPPORTUNITY

- Strengthen rural sustainable development policies.
- Poverty reduction.
- Development and productive alternatives.
- Food security.
- Energy security.
- Conservation of biodiversity and ecosystems.
- Integral management of the land.
- Community management of the forests.
- Different actor engagement, facilitate policies' transversality and intergovernmental cooperation.



# Thank you!

