



**Russian Academy of Science  
Ural Department  
Komi Scientific Center  
Institute of Socio-Economic and Energetic Problems of the North**

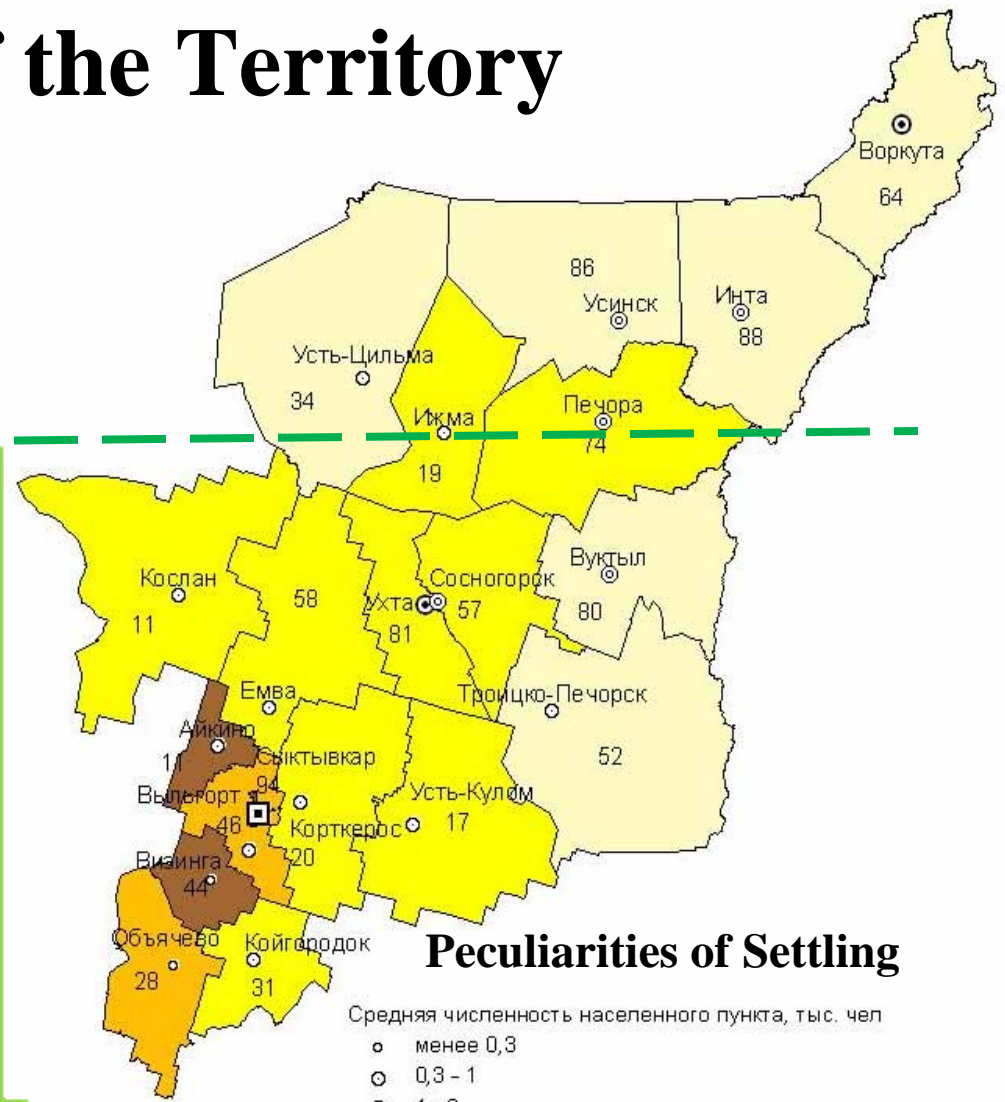
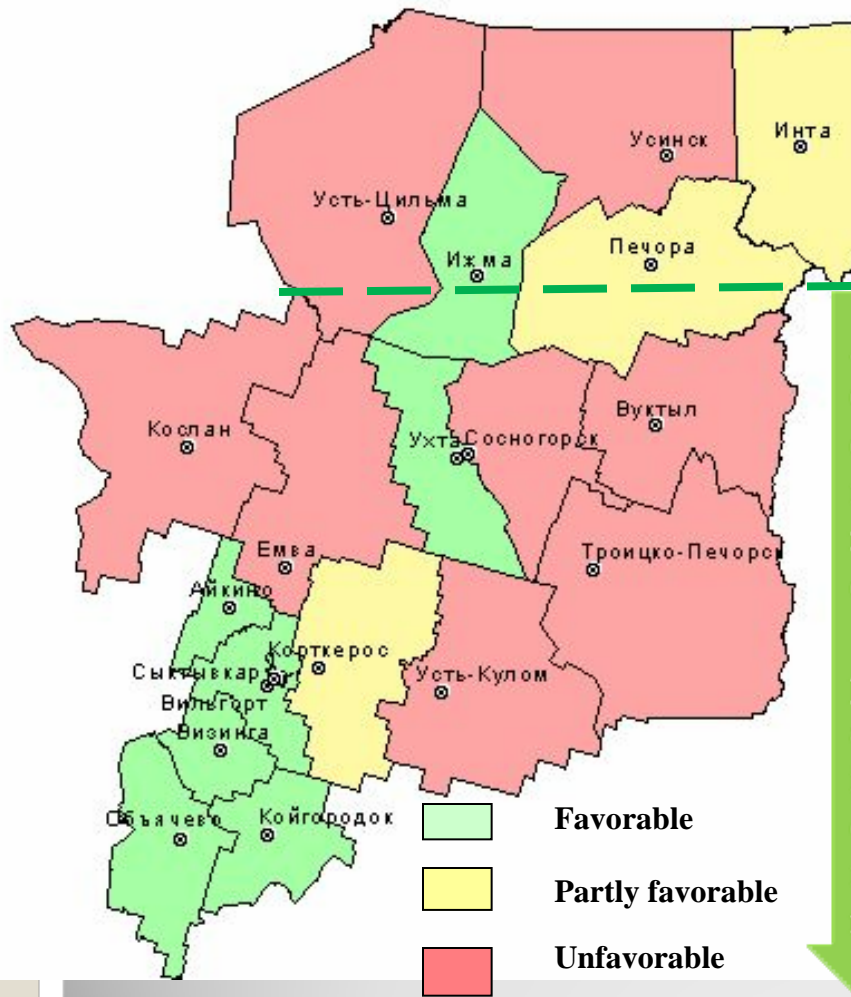
## **Socio-Economic Regulation of Forest Regions**

**Tamara Dmitrieva**  
**dmitrieva@iespn.komisc.ru**

**Alexander Gibezh**  
**gibej@iespn.komisc.ru**

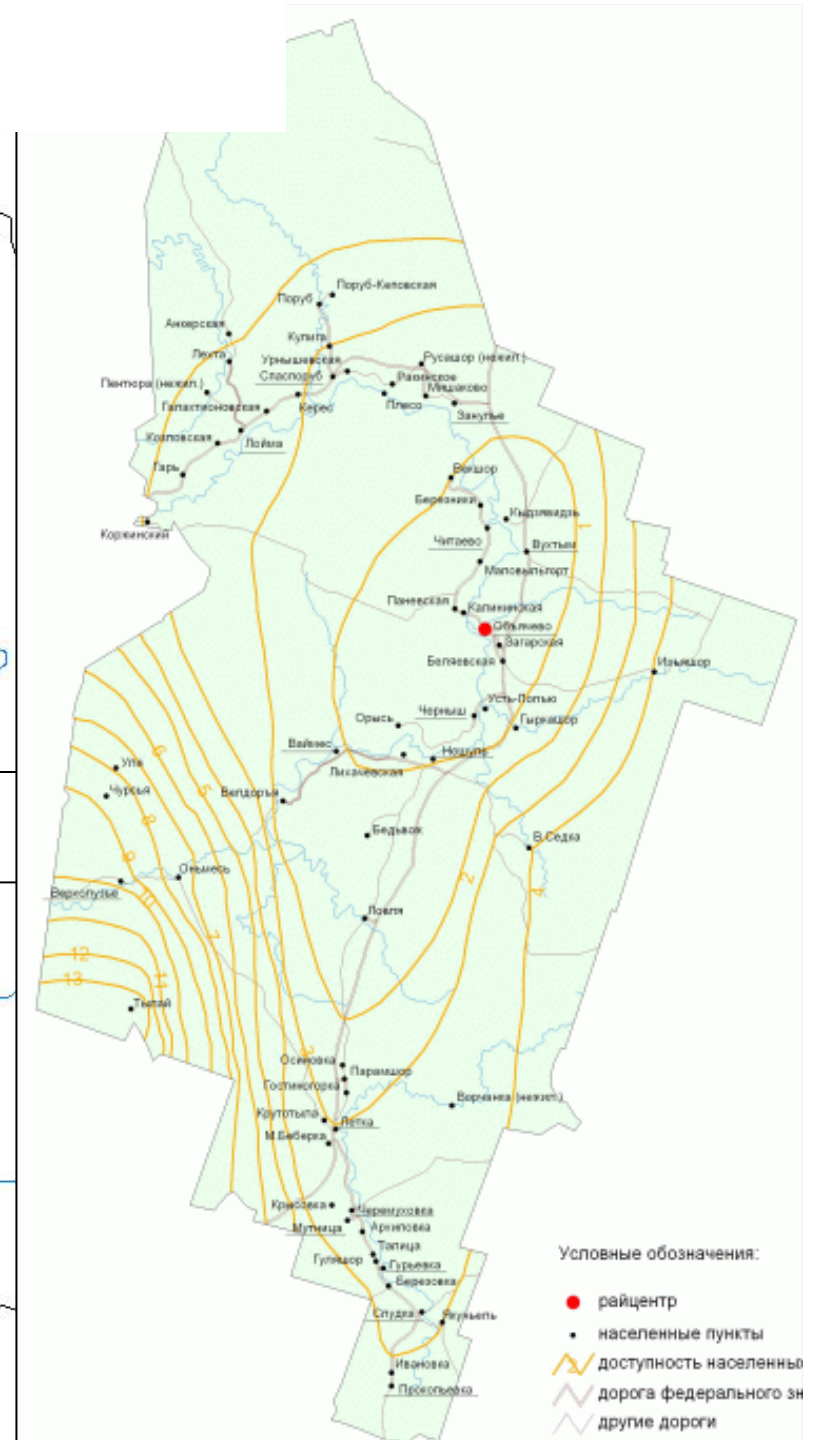
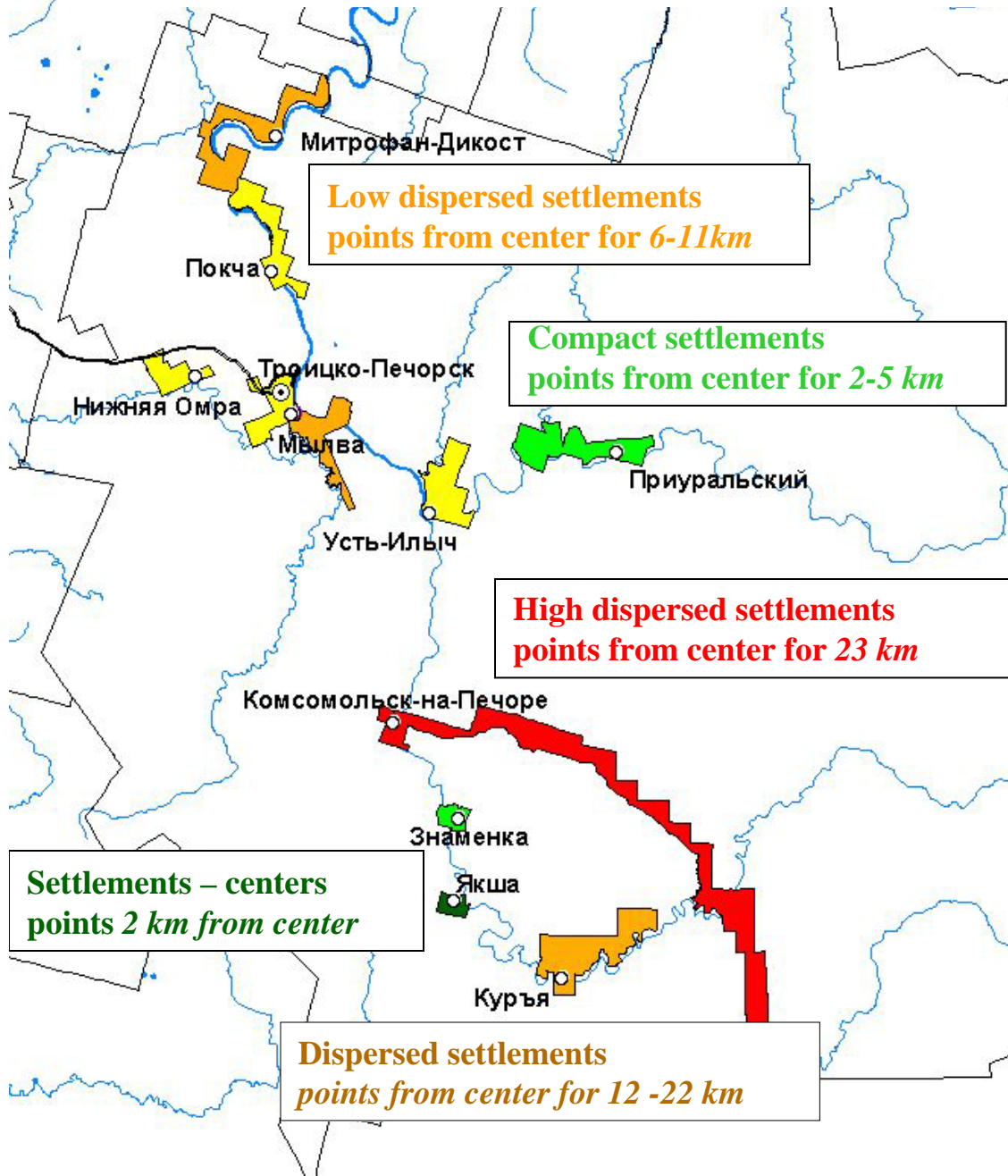
**The Forest Dialogue  
Syktyvkar  
October 23, 2008**

# Settling and Tie up of the Territory



11 - Доля центра в численности населения, %

# Transport Access Estimation



# Socio-Economic Situation Rating Estimation of Municipalities, 2006

*Production Potential*

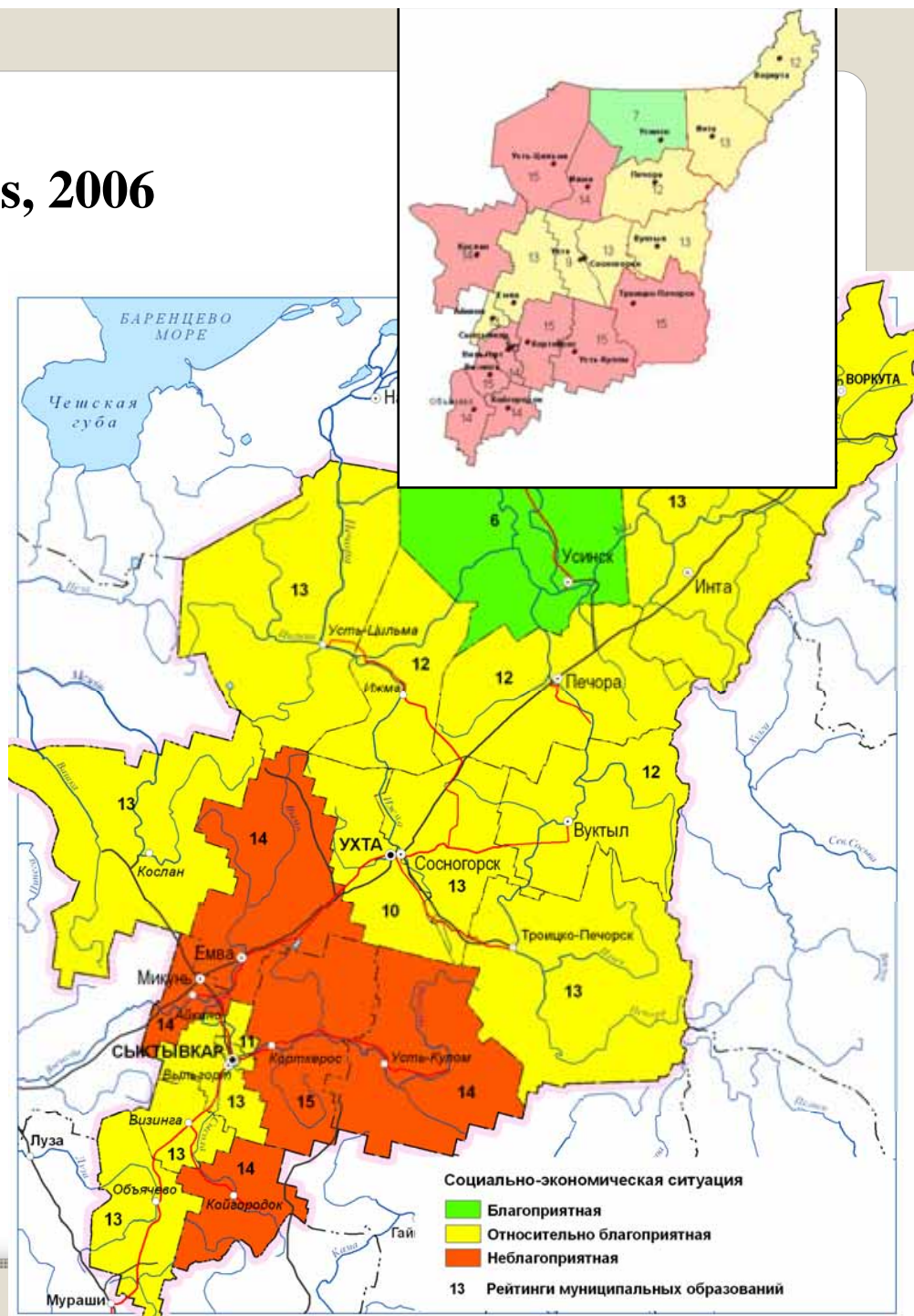
*Financial Sustainability*

*Demographical Situation*

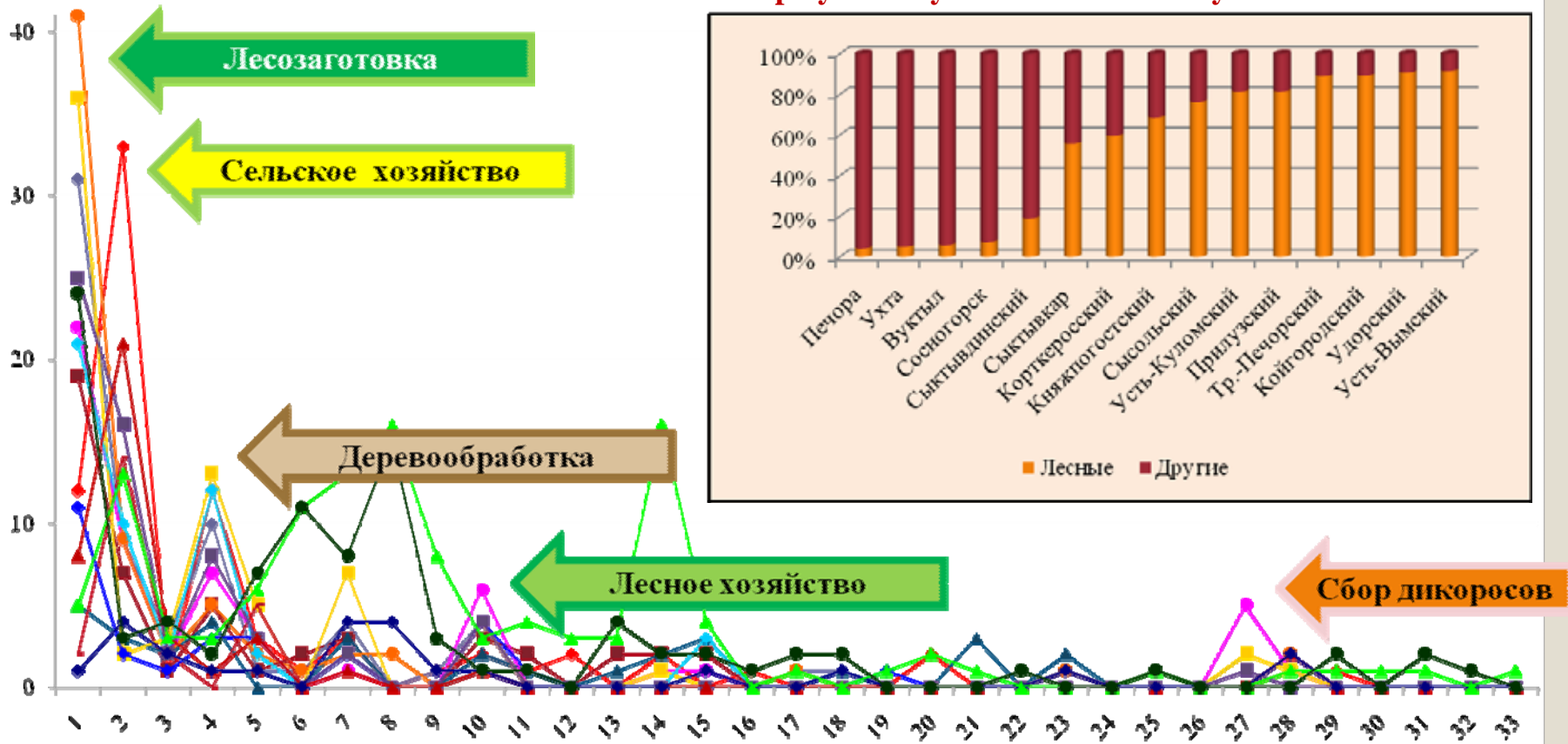
*Cost of Life*

*Infrastructure*

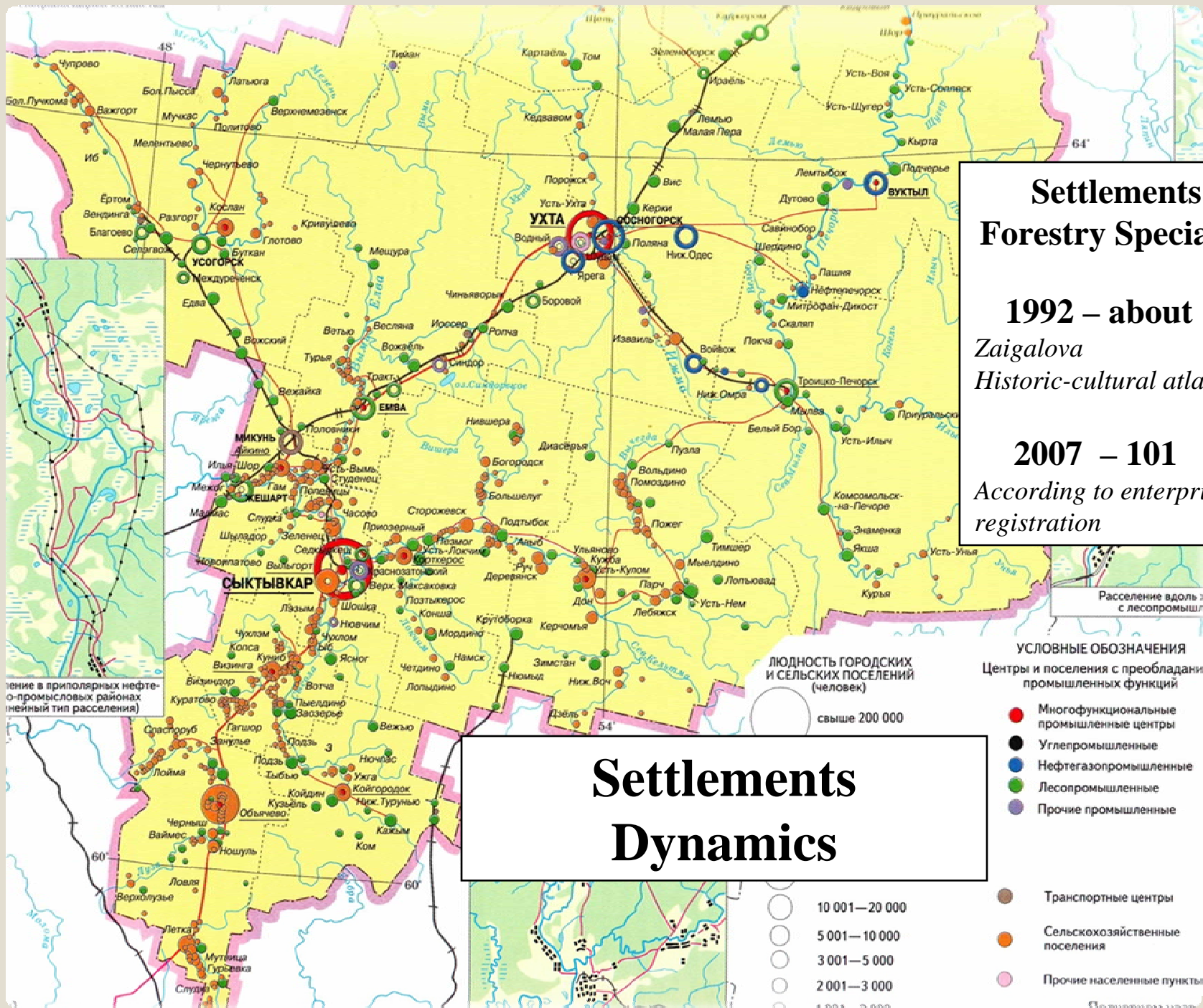
*Social Tension*



# Municipalities Production Base



- |                         |                            |                         |                         |
|-------------------------|----------------------------|-------------------------|-------------------------|
| —●— МР "Сыктывдинский"  | —■— МР "Усть-Вымский"      | —▲— МР "Княжпогостский" | —◆— МР "Прилузский"     |
| —●— МР "Усть-Куломский" | —●— МР "Троицко-Печорский" | —■— МР "Удорский"       | —■— МР "Тжемский"       |
| —●— МР "Сысольский"     | —●— МР "Койгородский"      | —■— МР "Корткеросский"  | —▲— МР "Усть-Цилинский" |
| —●— МР "Вуктыльский"    | —●— МР "Печорский"         | —●— МР "Сосногорский"   |                         |



**Settlements with Forestry Specialization:**

**1992 – about 180**  
*Zaigalova*  
*Historic-cultural atlas of Komi*

**2007 – 101**  
*According to enterprises registration*

**Settlements Dynamics**

- УСЛОВНЫЕ ОБОЗНАЧЕНИЯ**
- Центры и поселения с преобладанием промышленных функций
- Многофункциональные промышленные центры
  - Угледо-промышленные
  - Нефтегазо-промышленные
  - Лесопромышленные
  - Прочие промышленные
- Транспортные центры
- Сельскохозяйственные поселения
- Прочие населенные пункты

**ЛЮДНОСТЬ ГОРОДСКИХ И СЕЛЬСКИХ ПОСЕЛЕНИЙ (человек)**

- свыше 200 000
- 10 001—20 000
- 5 001—10 000
- 3 001—5 000
- 2 001—3 000
- 1 001—2 000

... в приполярных нефте-о-промысловых районах (линейный тип расселения)

Расселение вдоль ... с лесопромы...

... обозначения



## Features of Forest-Economical Zones, 2007

Indicators	Forest-Economical Zones		
	Central	Middle	Periphery
<b>Loaded production on the whole, cubic meters</b>	<b>27603</b>	<b>1454</b>	<b>2805</b>
<b>Agreed Forest Area, million cubic meters</b>	<b>0,75</b>	<b>8,6</b>	<b>17,9</b>
<b>Logging, million cubic meters</b>	<b>0,27</b>	<b>1,87</b>	<b>5,27</b>
<b>Forest area use, %</b>	<b>36</b>	<b>22</b>	<b>30</b>
<b>Timber processing (goods)*</b>	<b>P,Pp,C,Pw,S</b>	<b>F, S</b>	
<b>Production of processing, million cubic meters</b>	<b>8537</b>	<b>659</b>	<b>513</b>
<b>Processing volume, million cubic meters</b>	<b>4,9</b>	<b>0,25</b>	<b>0,44</b>
<b>Production of processing cost of 1 cubic meter, thousand RUR</b>	<b>5,5</b>	<b>2,6</b>	<b>1,16</b>

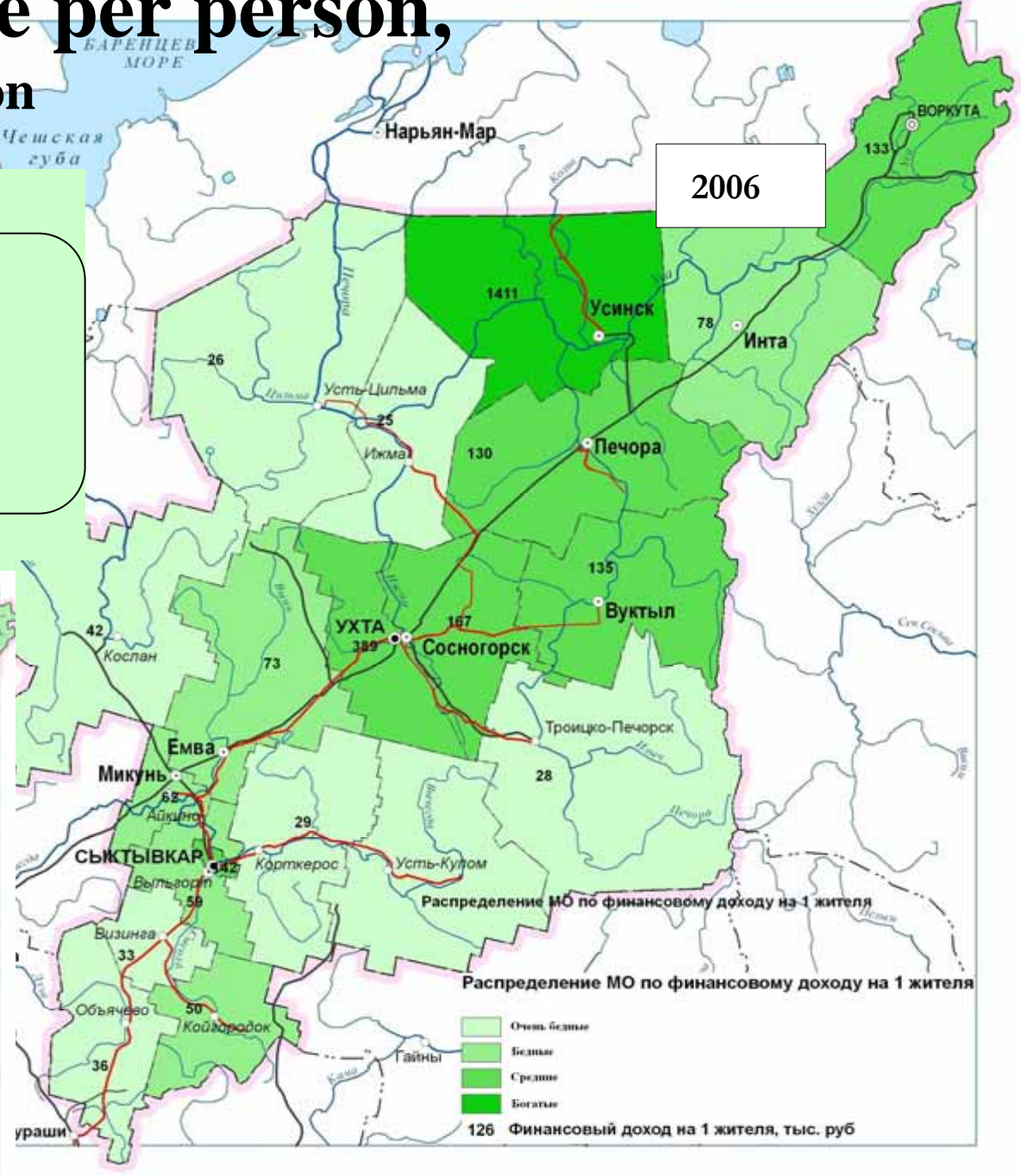
\*Forest production: P – pulp, Pp – paper, Pw – plywood, C – cardboard, B – board, S – saw materials, F – fiberboard



# Financial Income per person, thousand RUR per person

**Financial Income:**  
taxes,  
non taxed income,  
companies' income after taxes,  
amortization,  
salary

2006



# Social Potential

*Demography*



*Employment*



Population Quality



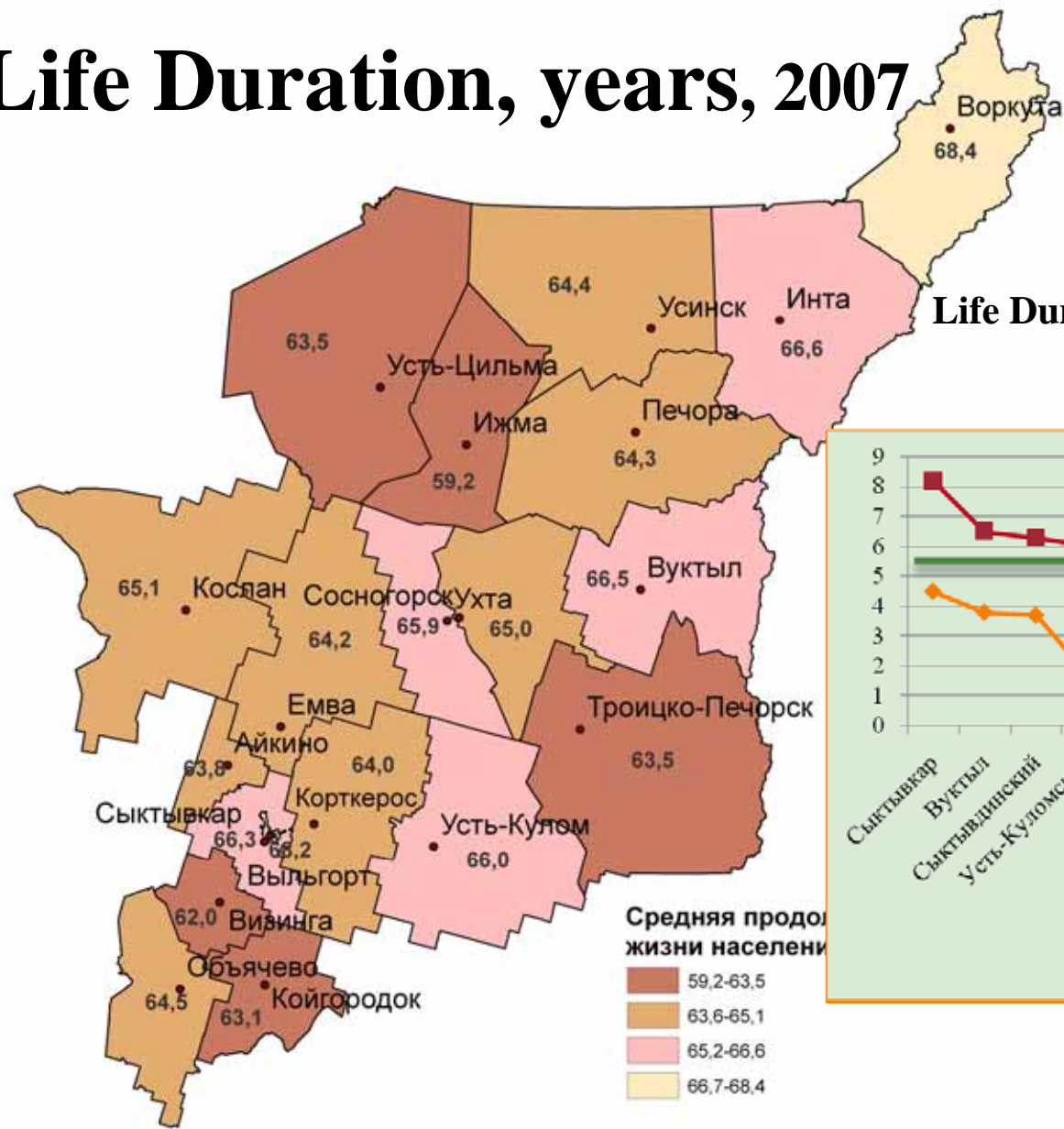
*Health*



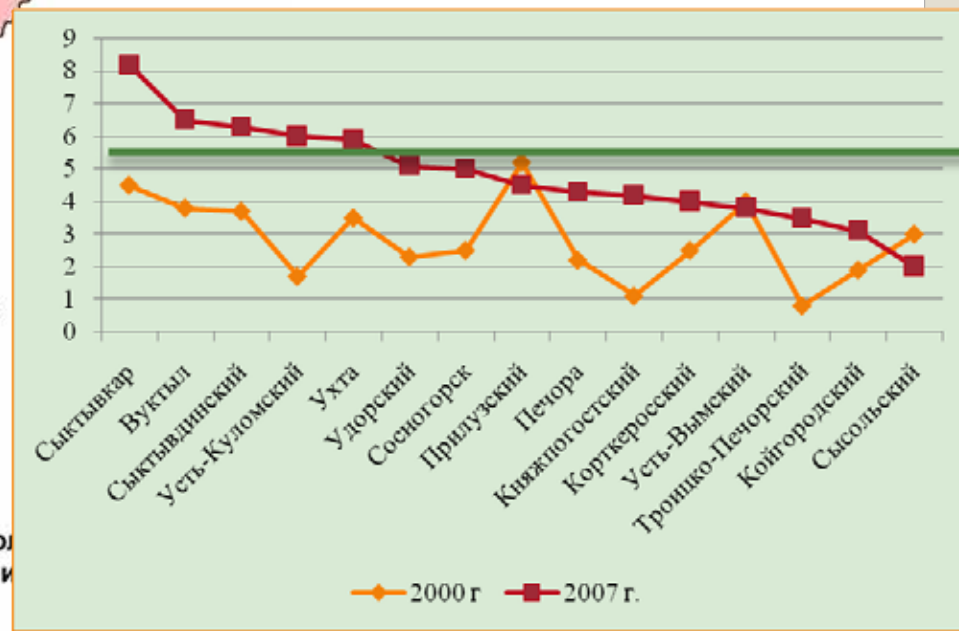
*Income*



# Life Duration, years, 2007



**Life Duration Dynamics**  
(60 years + axis)



## **Population Quality**

**Koigorodok region**

### ***Population Employment***

Employment reduction in the region **1994-2006 up to 1,2 times** (Komi – 1,2)

**Registered unemployment in the region – 6,2 %**

**Griva village 12,5%, Nizhyaya Turunjya 11,4%, Kom 9,2%**

**Among unemployment:**

**55 % – women,**

**27 % – youth at the age of 16-29**

**36 % – high and primary professional education**

**Unemployed economically active population – 22%**

**Verifies in different settlements from 13 up to 83 %**

**More than 50 % in villages Guzh, Kom, Ust-Voktym, Verkhnyaya Turjya**

**Adaptation of Population –**

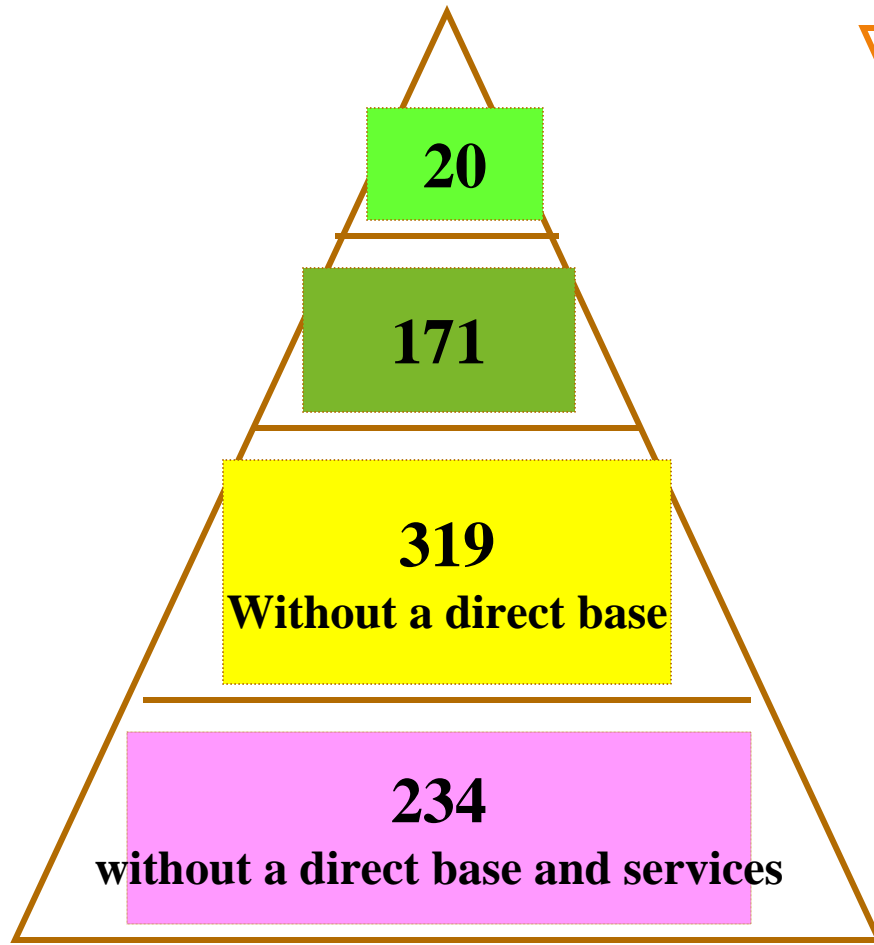
**professional education,**

**Transfer of employment to nonproductive sphere (budget organizations)**

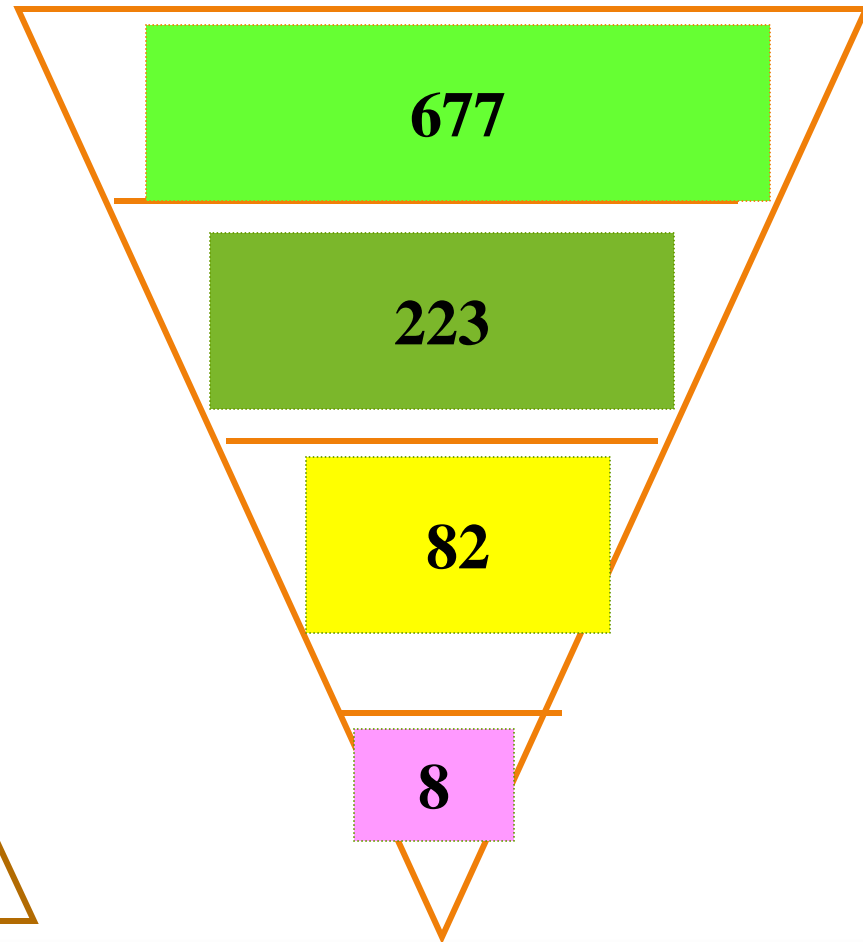
**Degradation of Population** is developing for jobless generation

**Large scale of «space exclusive» -  
areas without conditions needed for comfort life and industry**

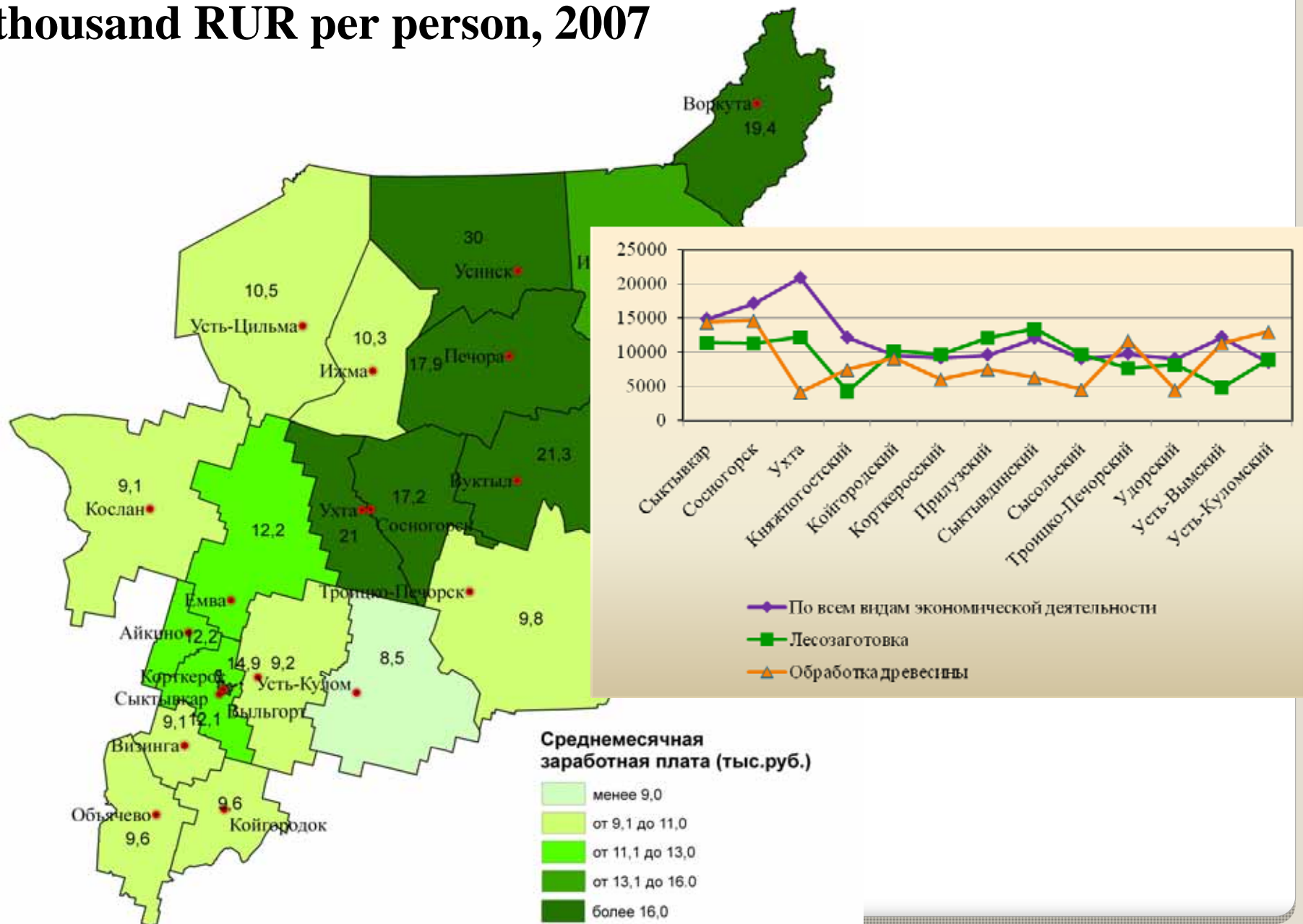
*Number of points*



*Population, thousand persons*



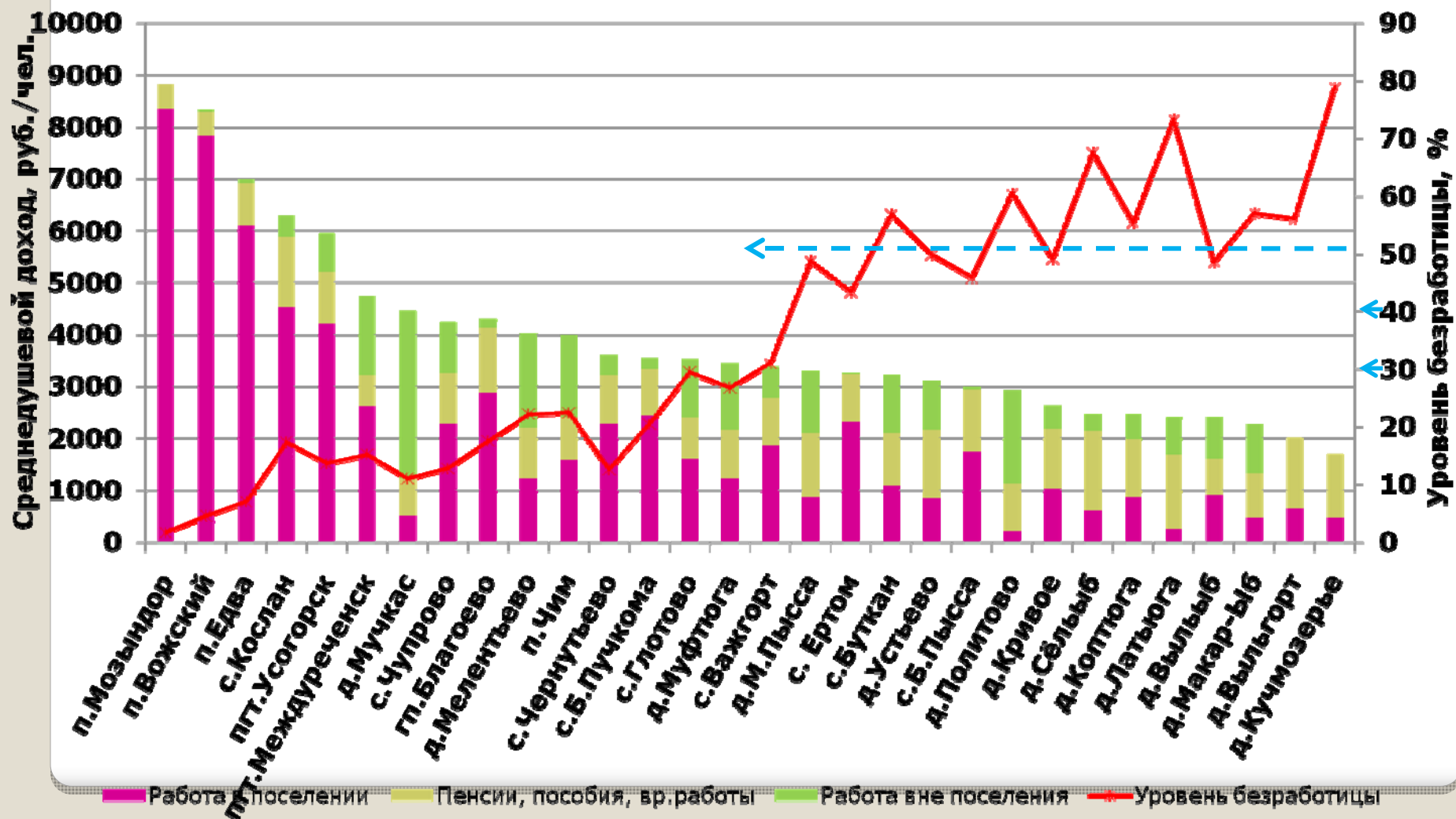
# Average Monthly Salary, thousand RUR per person, 2007



# «Washout» of Production Base

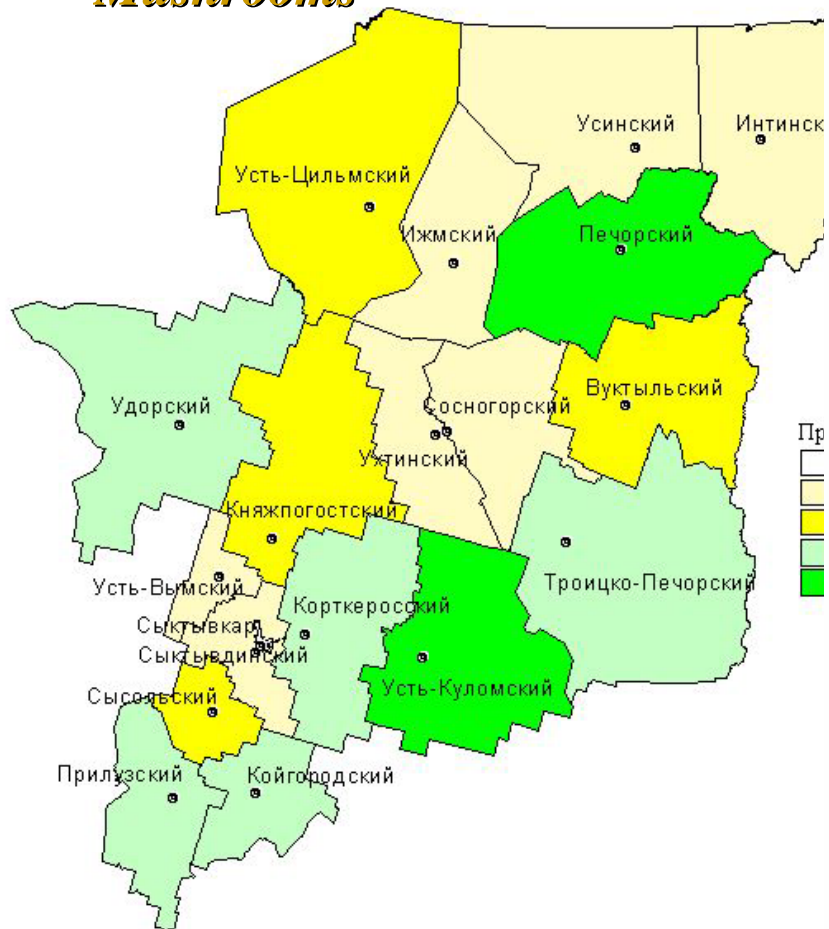
Economical “washout” of periphery, hypertrophy of the capital

Low level of income and employment in rural settlements

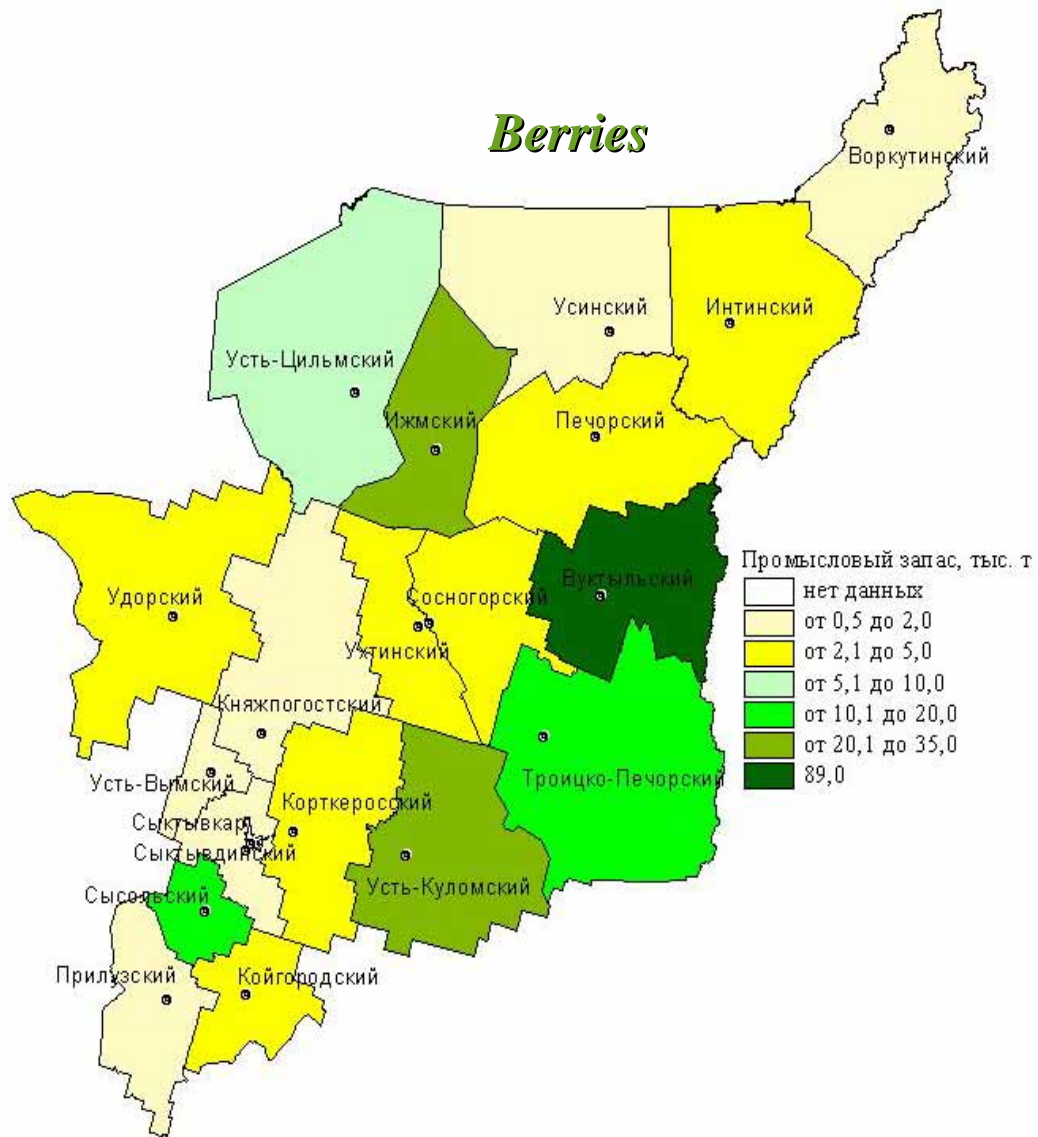


# Trade Reserve of Mushrooms and Berries Resources

## Mushrooms



## Berries

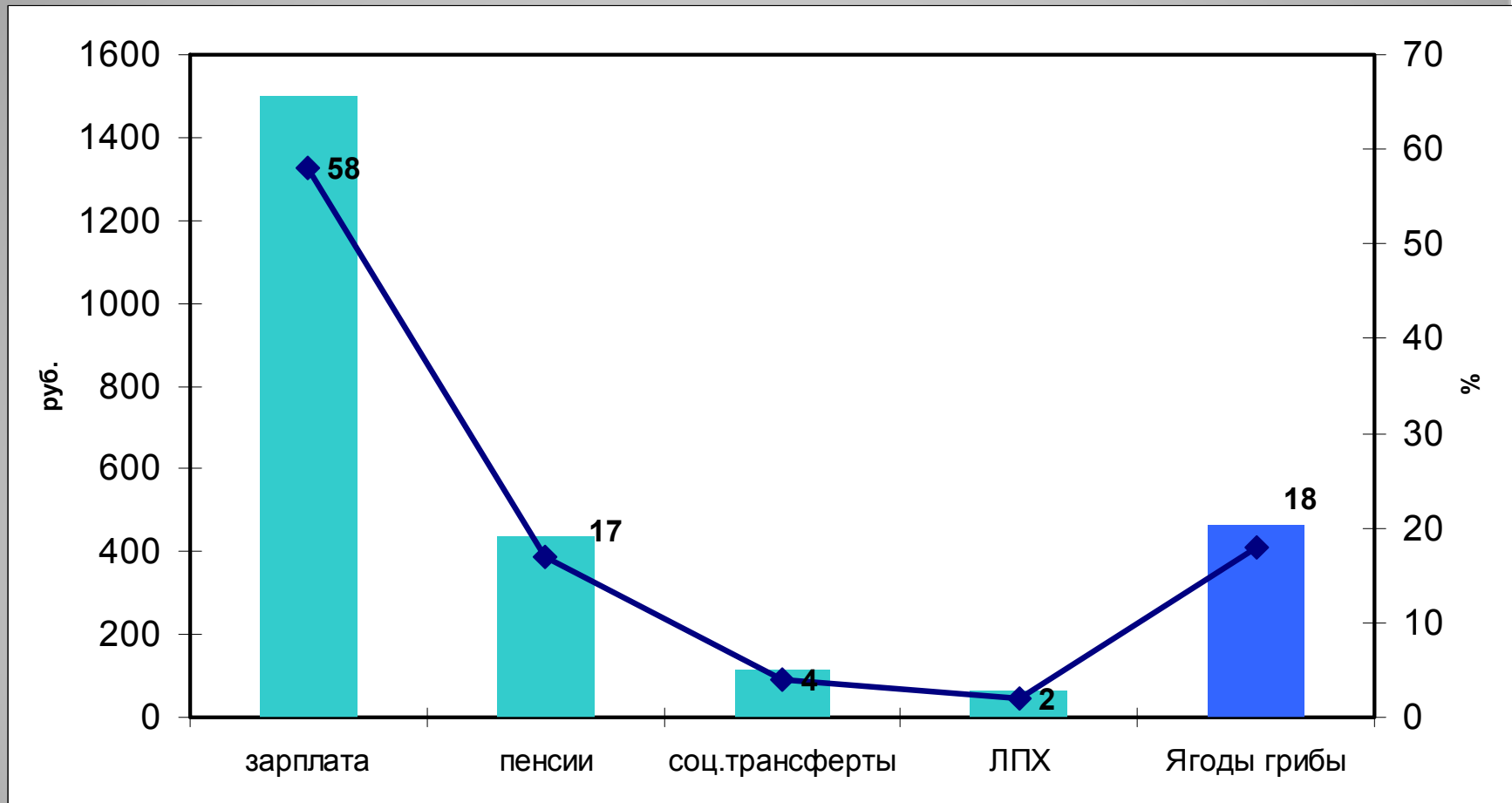


Промысловый запас, тыс. т

- нет данных
- от 0,5 до 2,0
- от 2,1 до 5,0
- от 5,1 до 10,0
- от 10,1 до 20,0
- от 20,1 до 35,0
- 89,0



# Mushrooms and Berries Role in Population Income, Nivshera Village



## Role of Individual Agriculture, Hunting, Fishing, Gathering of Wild Plants

Regions	Important for self-sufficiency %				Important as income resource %			
	garden	cattle	hunting, fishing	mushrooms berries	garden	cattle	hunting, fishing	mushrooms, berries
Udora	85	51	60	69	29	20	23	37
Koigorodok	83	52	29	78	22	11	11	61
Sysola	89	62	21	61	36	16	8	25
Syktyvdin	79	32	17	21	14	5	7	25
Troitsko-Pechorsk	85	29	40	69	3	3	6	10
Ust-Kulom	87	62	20	25	31	25	6	38

## Dynamics of Material Well Being and Migration

Region	«Will be any changes of well being for 5 years?»			«Will it be better in the future 5 years?»			«Are you going to change the place of living?»		
	Improved	No changes	Got worse	Will be better	No changes	Will be worse	Will not leave	Want to leave	No answer
<b>Udora</b>	<b>39</b>	<b>48</b>	<b>13</b>	<b>22</b>	<b>59</b>	<b>16</b>	<b>62</b>	<b>38</b>	<b>0</b>
<b>Koigorodok</b>	<b>42</b>	<b>50</b>	<b>8</b>	<b>15</b>	<b>48</b>	<b>30</b>	<b>58</b>	<b>42</b>	<b>0</b>
<b>Sysola</b>	<b>26</b>	<b>49</b>	<b>25</b>	<b>17</b>	<b>44</b>	<b>38</b>	<b>56</b>	<b>44</b>	<b>0</b>
<b>Syktyvdin</b>	<b>50</b>	<b>42</b>	<b>8</b>	<b>29</b>	<b>49</b>	<b>18</b>	<b>61</b>	<b>34</b>	<b>4</b>
<b>Ust-Kulom</b>	<b>47</b>	<b>35</b>	<b>18</b>	<b>24</b>	<b>34</b>	<b>42</b>	<b>71</b>	<b>27</b>	<b>2</b>

## **To Strengthen the Space**

*To gripe the settling system: close and resettle*

## **To Unite the Space**

*to make development conditions equal*

### *Infrastructure*

- **restore forest roads;**
- **energy: gas, local energy systems, reliability of transmission facilities;**
- **social services.**

### *Network organization of production*

- **forestry,**
- **agriculture.**

## **Modernization of Space**

### ***Restore the production base***

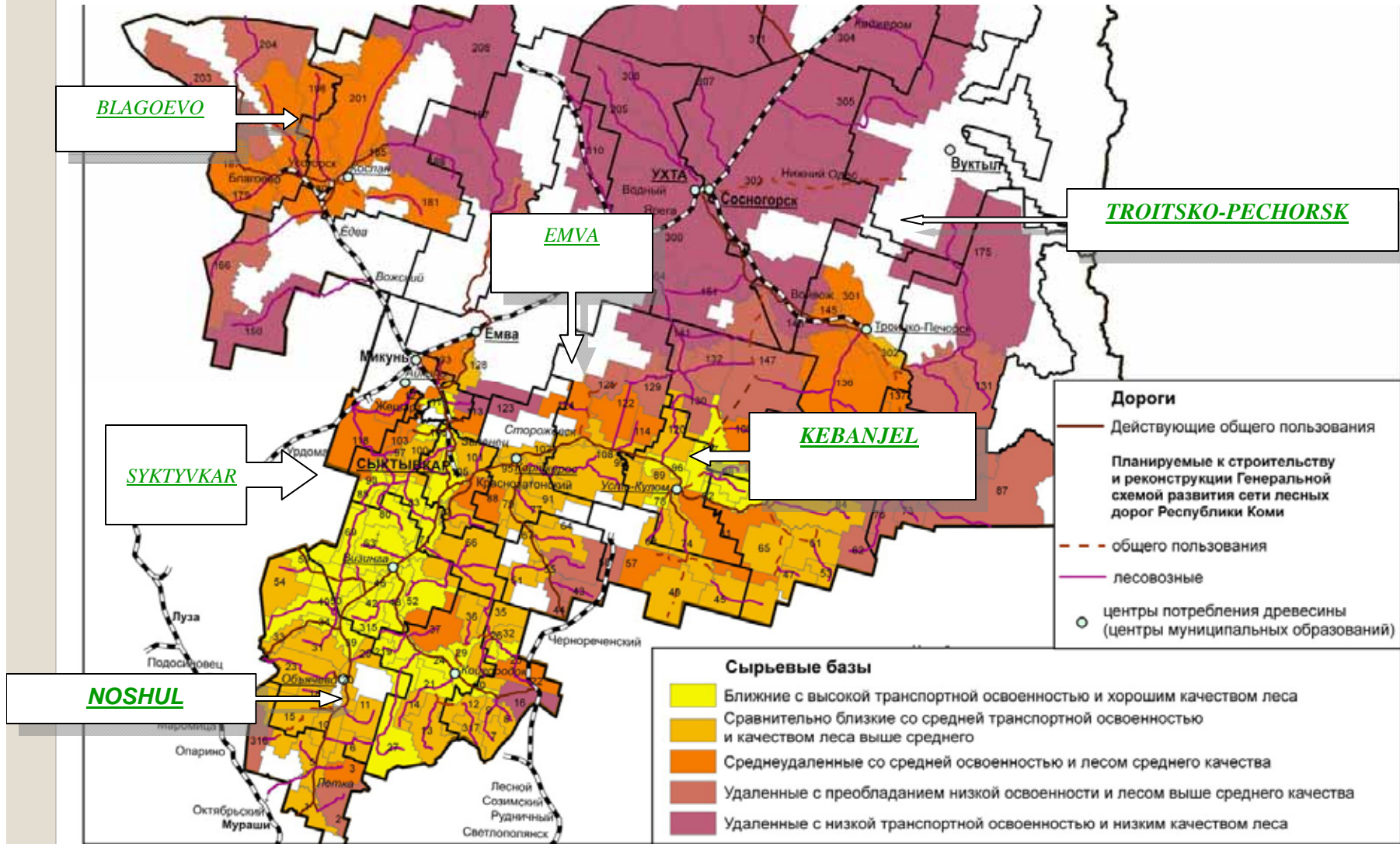
- **decentralization and oriented on inner demand diversification of forestry sector,**
- **new business,**
- **local staff.**

### ***Replace industrial base of economy***

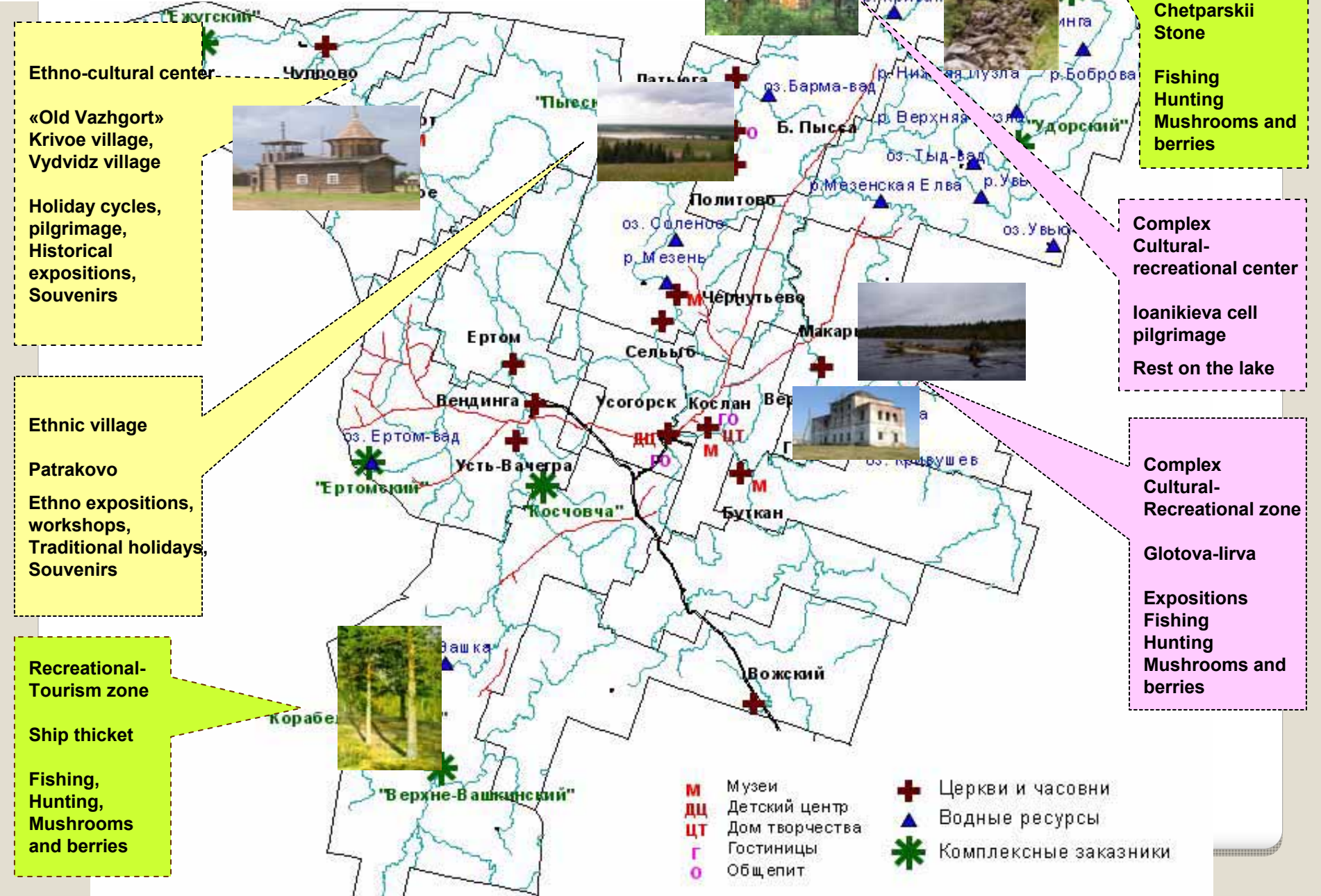
- **fishery (aqua sector),**
- **«economy of feelings» (cultural-recreational),**
- **mushrooms and berries economy,**
- **revitalization of traditional life support.**

### ***Innovationally polarize***

# Perspective Forestry Projects

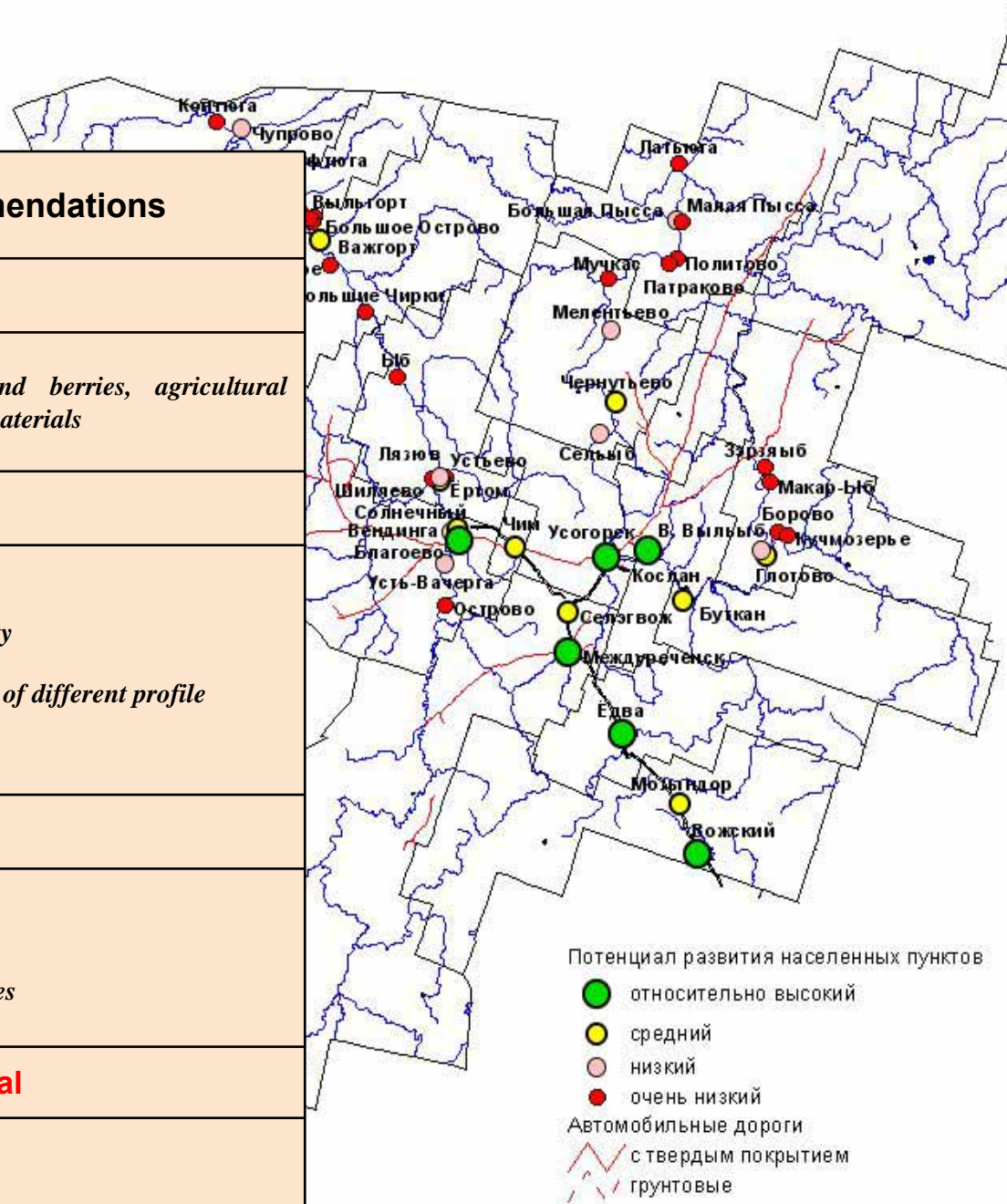


# Cultural-Recreational Complex, Udora Region



# Settlements Udora Region

Types of Settlements	Development recommendations
<b>High development potential</b>	
Region Centers—forest settlements	<i>Development of wood, mushrooms and berries, agricultural processing, production of building materials</i>
<b>Middle development potential</b>	
Settlements Centers	<i>Development of regional forestry base</i> <i>Development of agricultural marketability</i> <i>Creation of cultural-recreational centers of different profile</i>
<b>Low development potential</b>	
Close periphery	<i>Development of agricultural marketability</i> <i>Conservation of important villages</i> <i>Development of cultural-recreational services</i>
<b>Very low development potential</b>	
Far away periphery	<i>Tourism mushrooms and berries business</i> <i>Consolidation of settling system</i>





# **Strengthening of Financial Potential**

## ***Income Increase***

### **Municipal Economy Modernization**

- **Resource diversification**
- **Stratification**
- **Efficiency Increase**

## ***Territorization of Income***

### **Local Economy**

- **Processing decentralization of forestry,**
- **Development of independent managing subjects,**
- **Tax «binding»,**
- **Correction of corporate benefit distribution**

*Koni Village, Knyazpogost region, 400 years*

Thank you for Your  
Attention