

# Welcome to the

## Field Dialogue on Food, Fuel, Fibre and Forests (4Fs) in Indonesia

16-19 March 2014

Palangkaraya, Central Kalimantan, Indonesia

#4FsBorneo



# TFD & the 4Fs Initiative

**Gary Dunning**  
The Forests Dialogue

**Rod Taylor**  
WWF

18 March 2014  
Palangkaraya, Central Kalimantan





# The Forests Dialogue

## Purpose

- Established in 2000 by NGO and Business Leaders
- Reduce conflict among stakeholders in the forest sector
- International platform and process to discuss key SFM and conservation issues
- Build mutual trust, enhanced understanding and commitment to change

## Structure

- Steering Committee
- Secretariat
- Network of Partners



# How TFD Works



# TFD Initiatives

## Priority SFM Issues

- Food, Fuel, Fiber and Forests
- REDD+ Benefit Sharing
- Genetically Modified Trees
- Free, Prior, and Informed Consent
- Investing in Locally Controlled Forestry
- Forests & Poverty Reduction and Rural Livelihoods
- Intensively Managed Planted Forests
- Illegal Logging and Forest Governance
- Forests and Biodiversity Conservation
- Forest Certification



“As we get closer to 2050, reaching and maintaining a near zero deforestation rate will require forestry and farming practices that produce more with less land, water and pollution...”

# The 4Fs Initiative





# The 4Fs Initiative

*“for fairer, more sustainable land-use choices”*



wbcasd



- **Engage:** Create platform for dialogue



CLIMATE  
CHANGE  
AGRICULTURE AND  
FOOD SECURITY

- **Explore:** Research key challenges



WORLD  
RESOURCES  
INSTITUTE



The World Bank

- **Change:** Improve land-use decision making processes on the ground. Promote a landscape based approach.



# 4Fs in Brazil





# The 4Fs Initiative

---

One planet. The only  
one we have.



# The 4Fs Initiative

---

We currently use natural resources as if we had 1.5 planets.



# The 4Fs Initiative

---

We'll need more than 2 planets by 2030 if we carry on as we are.



# The 4Fs Initiative

---

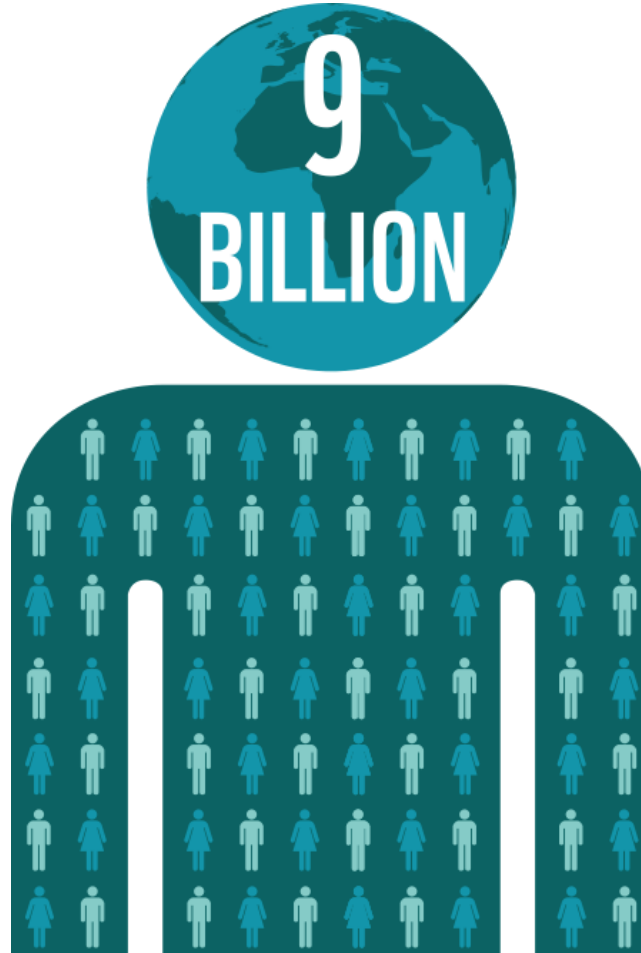
The world's population is set to grow from 7 billion today...



# The 4Fs Initiative

---

...to more than  
9 billion by 2050.



# The 4Fs Initiative

---

Per capita income is set to rise by 290%...



# The 4Fs Initiative

---

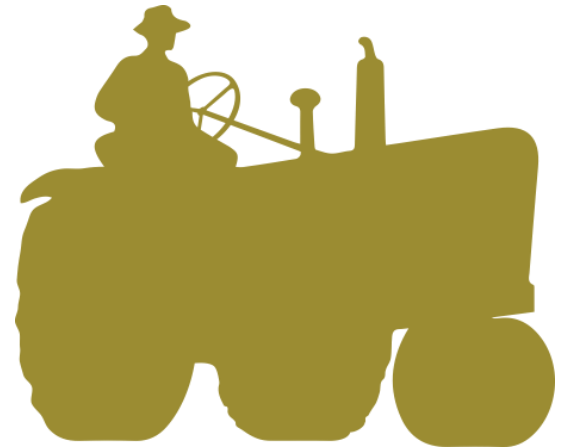
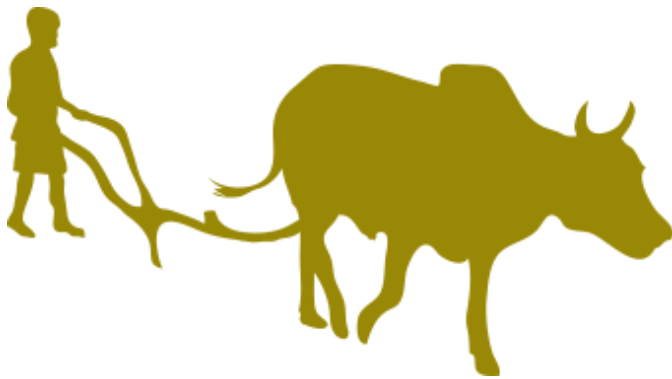
...leading to increased consumption.



## A planet under pressure

---

Over the next 40 years, we'll need to produce as much food as we've done in the last 8,000 years of agriculture.





# A planet under pressure

---

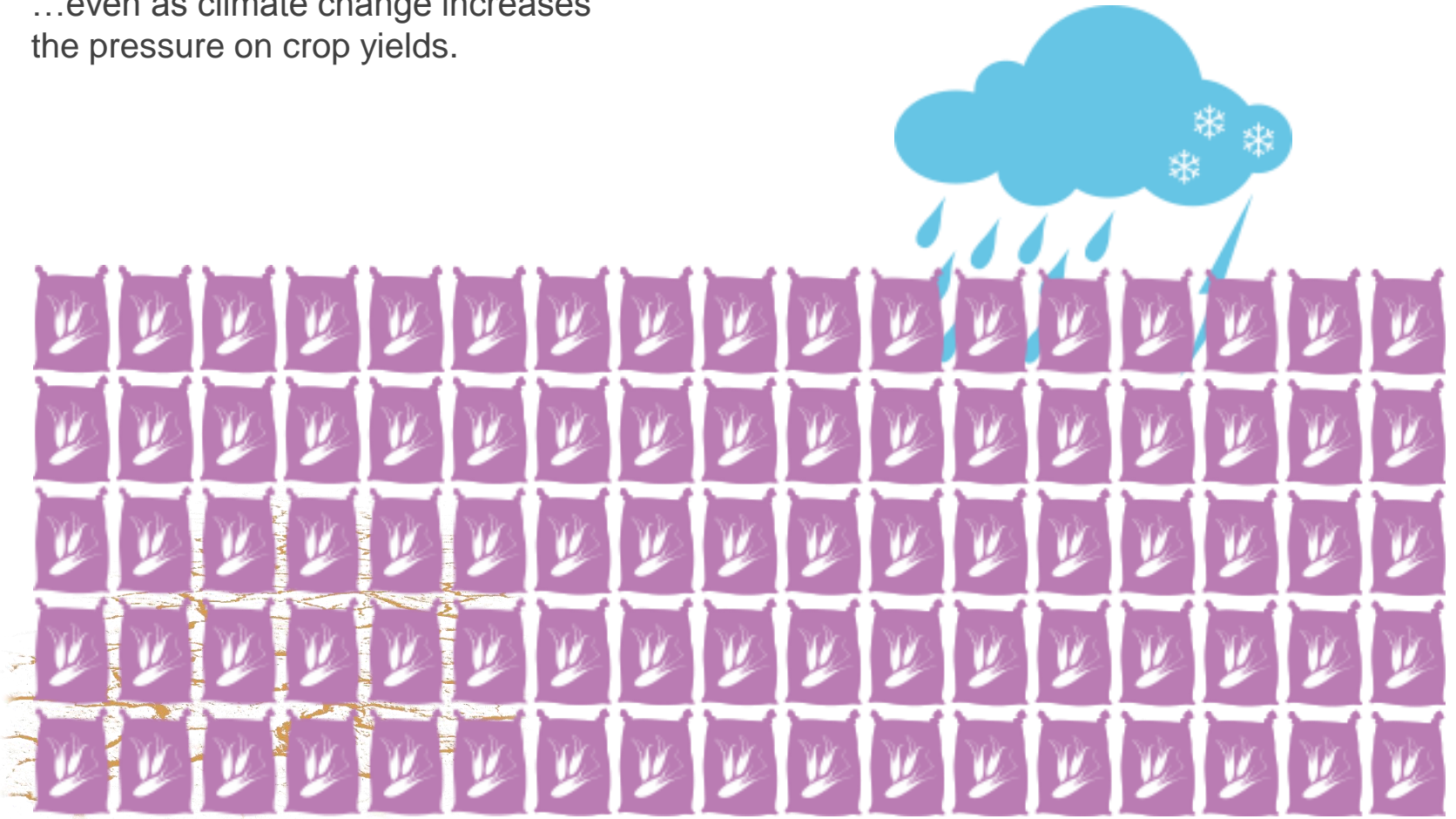
We need to expand global food production by 70%...



# A planet under pressure

---

...even as climate change increases the pressure on crop yields.



# A planet under pressure

---

By 2025, at least 3.5 billion people will live in water-stressed river basins.



# A planet under pressure

---

Biodiversity has declined by 30% since 1970, according to WWF's Living Planet Index.



# The 4Fs Initiative



TODAY

(not to scale)

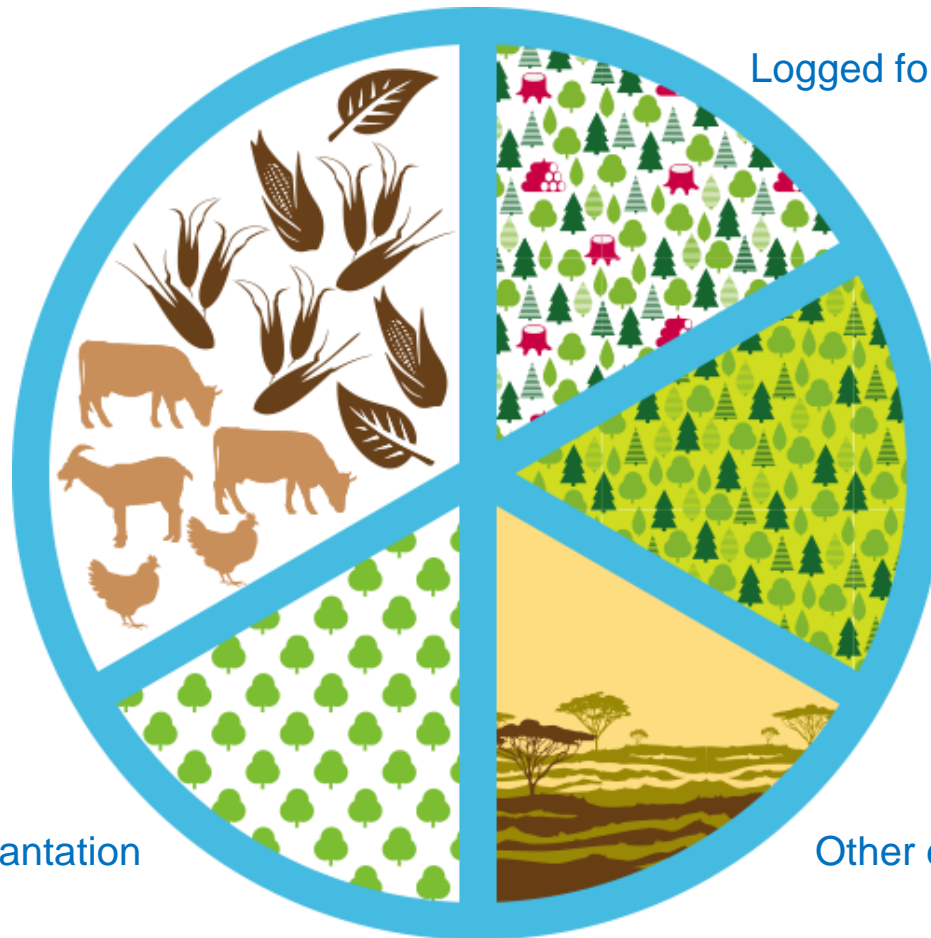
Farmland

Plantation

Logged forest

Unlogged forest

Other ecosystems



# The Big Squeeze



2050



High greenhouse gas emissions



Huge decline in biodiversity



# REDD Success



2050

Food prices rise a little



Decline in grassland, shrubland biodiversity



# Strict Conservation



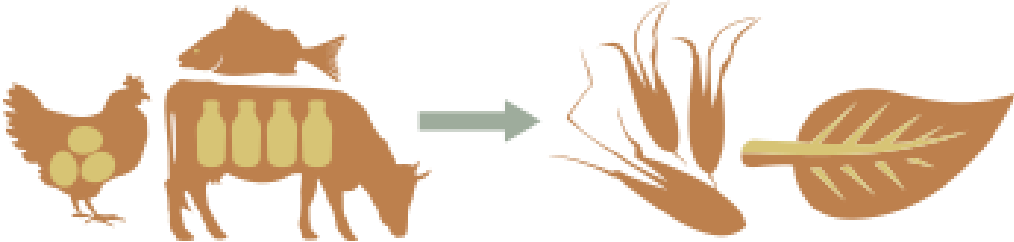
Farms and forests cannot meet projected global demand for food, timber and bioenergy.

Food prices skyrocket.

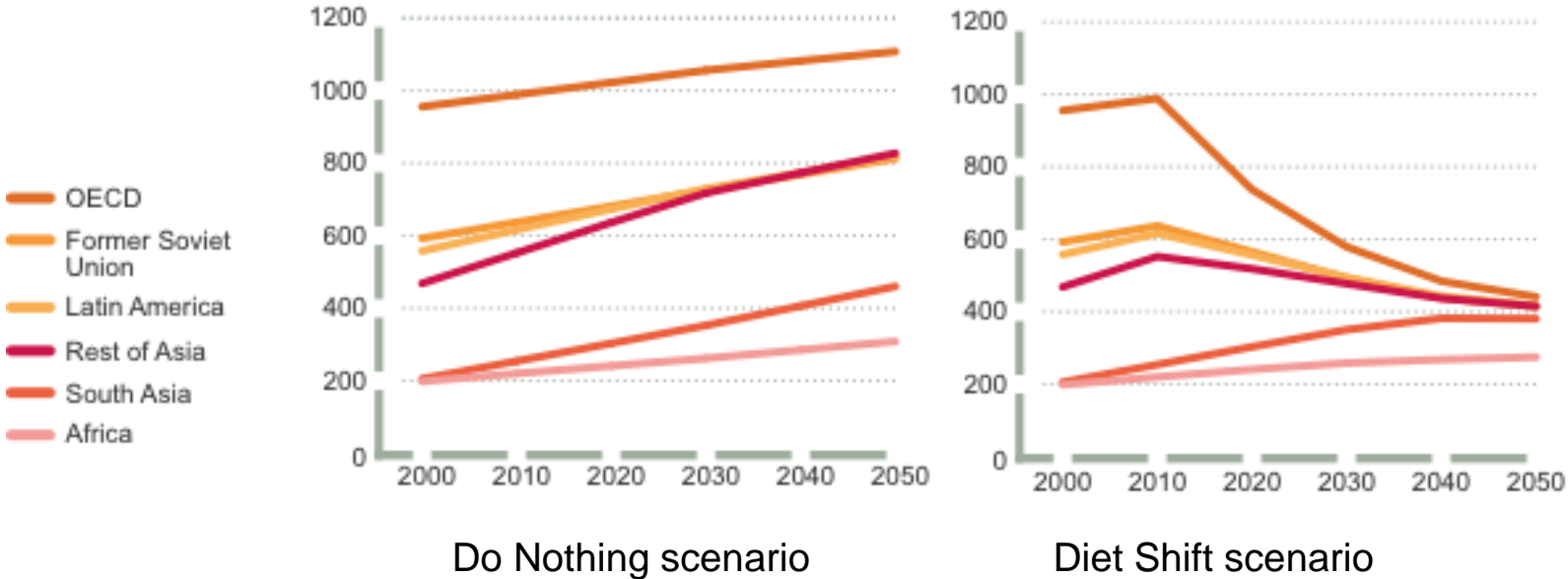




# Diet Shift



Per capita consumption of animal calories (kcal/cap/day)



# Diet Shift



Food prices remain stable



More biodiversity protected in other ecosystems





# Terima Kasih

#4FsBorneo

**TFD Documents and Publications**

Available electronically in English at:

 [www.theforestsdialogue.org](http://www.theforestsdialogue.org)

*Follow us on Twitter: @forestsdialogue*



*Like us on Facebook: the forests dialogue*

**The Forests Dialogue Secretariat**

Yale University  
New Haven, CT, USA

+1 203 432 5966

[tfd@yale.edu](mailto:tfd@yale.edu)  
[www.theforestsdialogue.org](http://www.theforestsdialogue.org)



# Welcome to the

## Field Dialogue on Food, Fuel, Fibre and Forests (4Fs) in Indonesia

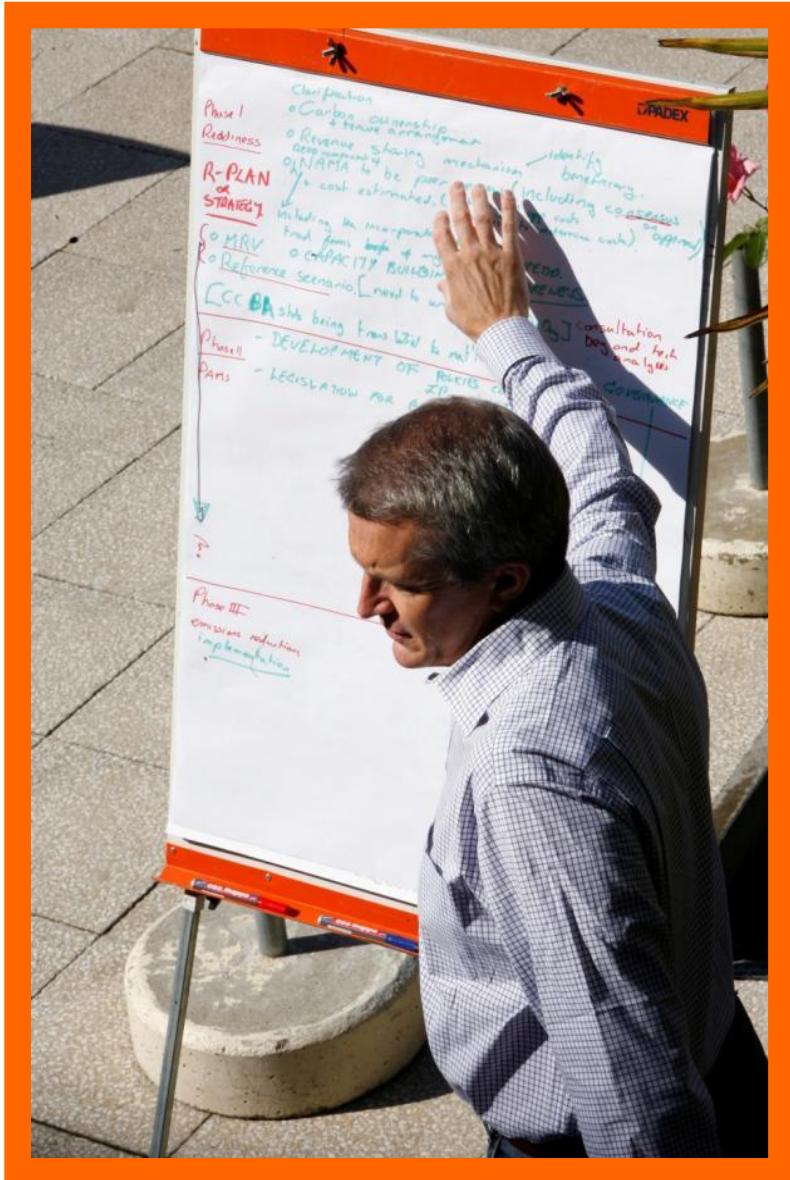
16-19 March 2014

Palangkaraya, Central Kalimantan, Indonesia

**#4FsBorneo**



# Today's Program



#4FsBorneo





# Introductions

## Dialogue Co-Chairs

- **Peter Holmgren** – CIFOR
- **Yusurum Jagau** – University of Palangkaraya
- **Milagre Nuvunga** – Micaia Foundation
- **Päivi Salpakivia-Salomaa** – UPM
- **Martua Sirait** - ICRAF

#4FsBorneo



# 4Fs Initiative

Co-Organizers



Support



Hosts

# TFD's Process

## TFD Operates under the Chatham House Rule

*"Participants are free to use the information received, but neither the identity nor the affiliation of the speaker(s), nor that of any other participant, may be revealed".*

## Ground Rules

- Use mobiles and computers during breaks
- No video
- Pictures OK
- Use Name Tents

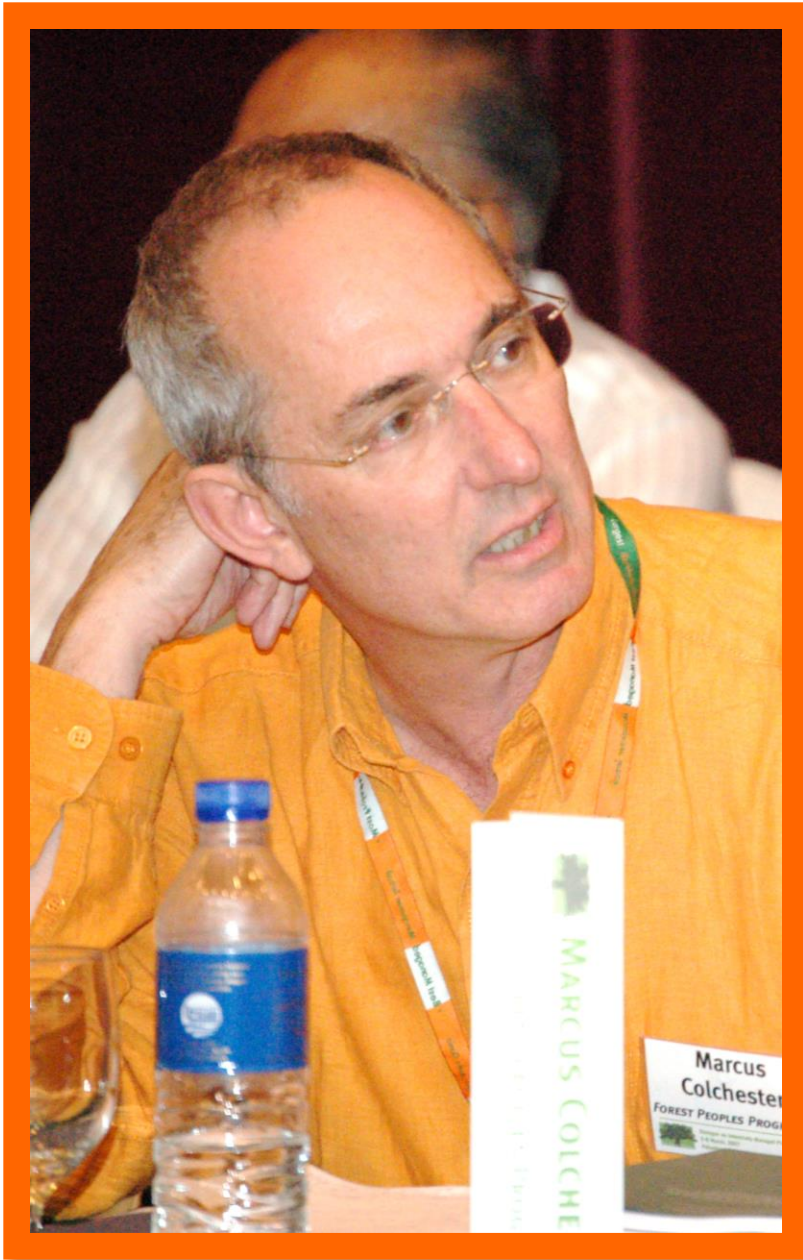




# TFD's Process

## Spirit of Participation

- Active listening
- Constructive, solution oriented interventions
- Participate as individual
- Help define and own the outcomes
- Facilitation “light” / Co-Chair’s roles





# Terima Kasih

#4FsBorneo

**TFD Documents and  
Publications**

Available electronically in English at:  
[www.theforestdialogue.org](http://www.theforestdialogue.org)



*Follow us on Twitter: @forestdialogue*



*Like us on Facebook: the forests dialogue*

**The Forests Dialogue Secretariat**  
Yale University  
New Haven, CT, USA

+1 203 432 5966

[tfd@yale.edu](mailto:tfd@yale.edu)  
[www.theforestdialogue.org](http://www.theforestdialogue.org)

