

BGA Group

PT. Bumitama Gunajaya Agro Group

www.bumitama-agri.com



EXCELLENCE THROUGH DISCIPLINE



PT. Windu Nabatindo Lestari

BGA Vision and Mission



Vision

To be a Leading CPO Producer through Continuous Improvement that Focus on Productivity, Cost Efficiency & Growth

Mission

- Enhance shareholders value
- Improve the Benefit and Quality of Life of Our Employees
- Improve the Welfare of the Local Communities & Environment

BGA History/ Milestone

2007

50,000 ha planted area.
IOI Group acquired 33% stake.
BGA joined RSPO #
1-0043-07-000-00

2011

Total processing
capacity 2,070,000 tpa

2013

Parent company
(BAL) joined RSPO in
November

2010

Surpassed
100,000 ha
planted area

2004

Commenced planting program
with 7,719 ha planted,
bringing total area to 18,993
ha



1996

Acquired first
land bank in
Central
Kalimantan

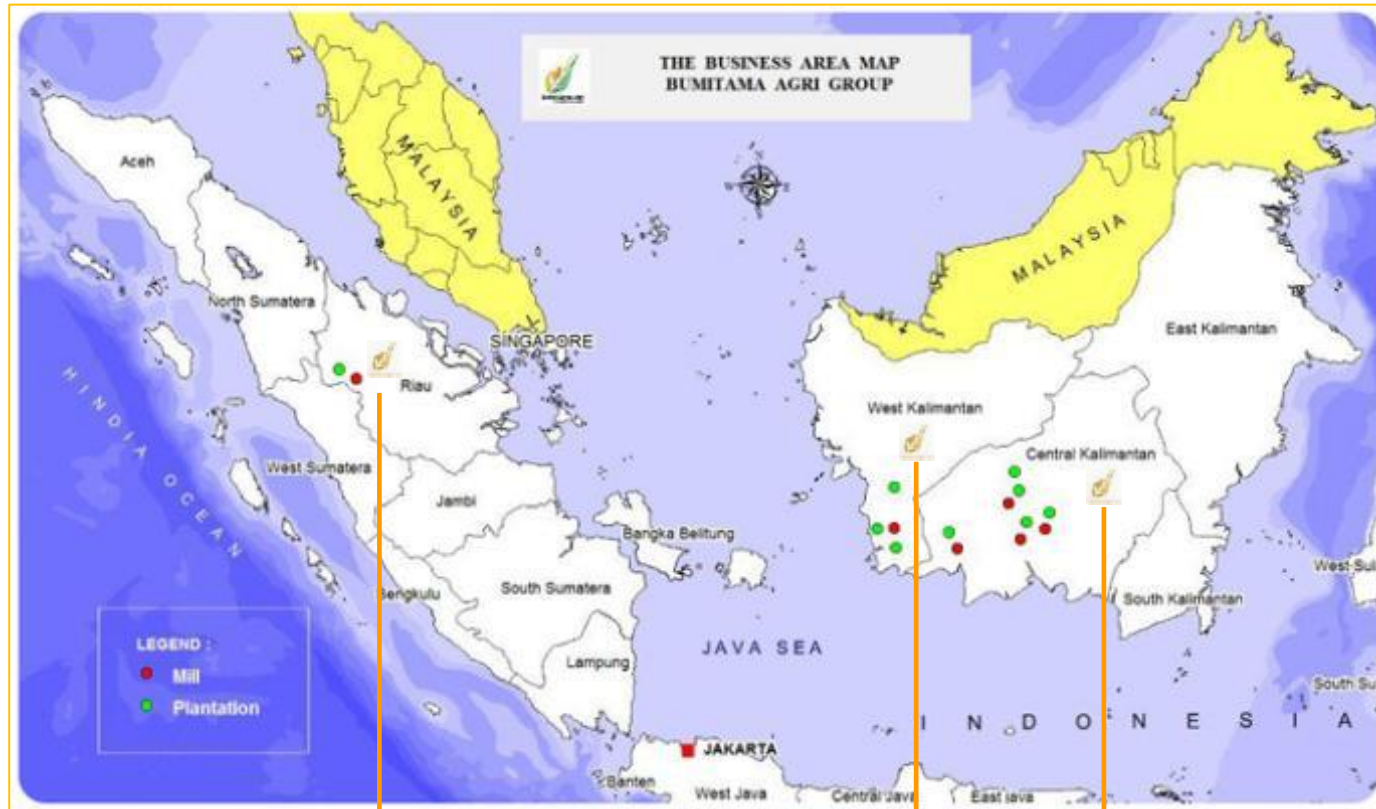
1998

Commenced
planting

2003

Commissioned first
CPO mill in Central
Kalimantan

BGA Business Area Map



West Kalimantan --> Area 6, 7, 8

Central Kalimantan --> Area 1, 2, 3, 4, 5

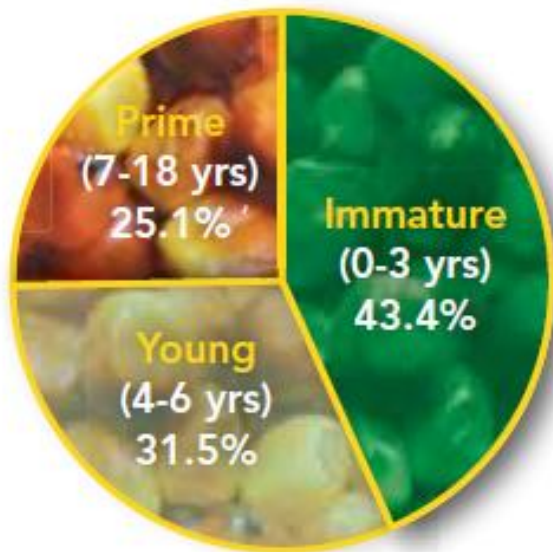
Riau --> Area 9

Plantation & Production

As at December 2012



Age Profile of Trees



PRODUCTION VOLUME (Tonnes)

Fresh Fruit Bunches ("FFB")	1,448,016
Nucleus	948,603
Plasma	499,413
Crude Palm Oil ("CPO")	462,291
Palm Kernel ("PK")	87,252

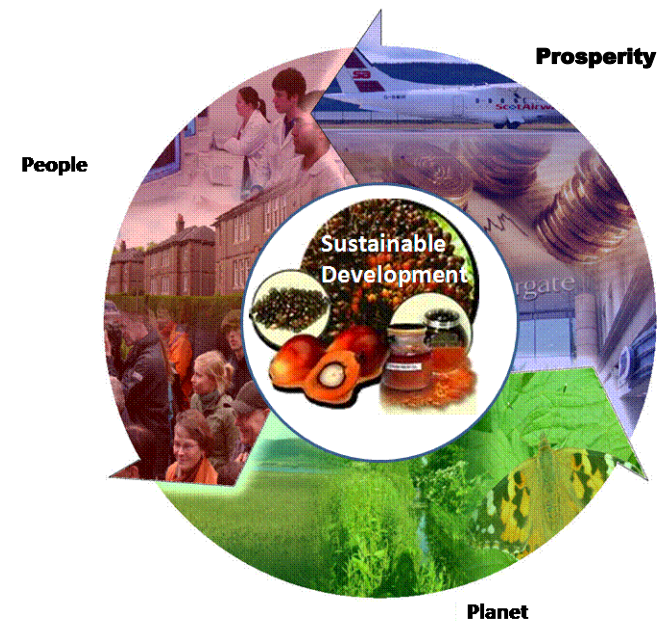
PRODUCTIVITY

FFB Yield per Mature Hectare (tonnes)	18.8
CPO Yield per Mature Hectare (tonnes)	4.5
CPO Extraction Rate (%)	23.8
PK Extraction Rate (%)	4.5

BGA Long Term Objective & Plan



We conduct our plantation activities
Sustainably,
Through continuous improvement
in productivity and efficiency (per
hectare), with
Environmental protection & social
responsibility



Our Strategic Policies on Sustainability



- We are member of Roundtable on Sustainable Palm Oil (RSPO)
- We are also in the Indonesia Sustainable Palm Oil (ISPO)

Sustainability Policy

- People: Improve welfare of local communities
- Planet: Sustainable oil palm practices
- Prosperity: Productivity, Efficiency & Growth

People (1)



Corporate Social Responsibility (Community Development)

Local Business Development

Communi
ty
Relations

Social Development

Partnersh
ip with
plasma
farmers

Create
business
opportun
ities

Sustainab
le
Livelihood

Sponsors
hip,
Infrastruc
ture

Education

Health

Cultural
&
Religions

People (2)

Plasma Schemes of BGA Group



- To empower partnership with local Cooperatives
- Plasma about **34,000 hectares (22%)** out of 157,000
- Partnership about **17,000 plasma farmers** under 17 cooperatives
- To date about Rp **400 Billion (US\$ 40 Million)** of incentive payment

People (3)

Plasma Scheme at WNL



- Koperasi Harapan Abadi, with 2,875 members
- Incentive payment since 2008, Rp 60 billion (US\$ 6 million)



People (4)

Awards at WNL, i.e



- Plasma Award, 2011, Governor of Kalimantan Tengah
- Tax Payer Award 2011, Tax Office Kotawaringin Timur
- Occupational Safety & Health 2011, Ministry of Manpower, Governor & Bupati
- Education Award 2009, 2010, 2011, Minister of Education
- CSR Award, Bupati Kotawaringin Timur



People (5)

Sustainable Livelihood



- Focus on Local **Condition and Potential**.
- Commodities being empowered : **Rubber, Cattle, Fisheries and Local Cottage**.
- Provide **Working Capital, Technical Support and Post Harvesting Management**.
- **7 villages** with more than **200 people** are selected for pioneering the program and activities

People (6) Health



- Provide **Clinics and medical practitioners** to employees & local communities.
- Provide **Baby and Child Day Care** for the employees.
- Free basic medical care : **Birth Control Program, ICU, medical check-ups, circumcision, Blood Donor, vitamins, child's nutrition, etc.**
- Arrange for doctors from local clinics and hospitals to conduct basic medical check-ups and provide medication where necessary.

People (7)

Infrastructure, Cultural & Religion



- Build and repair public infrastructure and maintenance to provide access and support social economic for the society: **bridges, roads, places of worship, clean water & electrical equipment, local burrier (sandung), etc.**
- Opening new access roads to previously inaccessible areas.
- To promote cultural values, we sponsor and participate in traditional events and social functions **(local arts & sports).**

People (8) Education



- **23 schools** in our operational area. (WNL 5 kindergartens, 3 primary, 1 secondary).
- Total intake of more than **2,500 students**.
- Provide **educational scholarships** covering elementary to tertiary levels.
- The scholarship recipients comprise top students selected from the schools located in or near our plantations
- Sponsoring **training programs** for the development of teachers and principals.
- Providing **free schooling, books and school bus transportation** to students.

Planet (1)



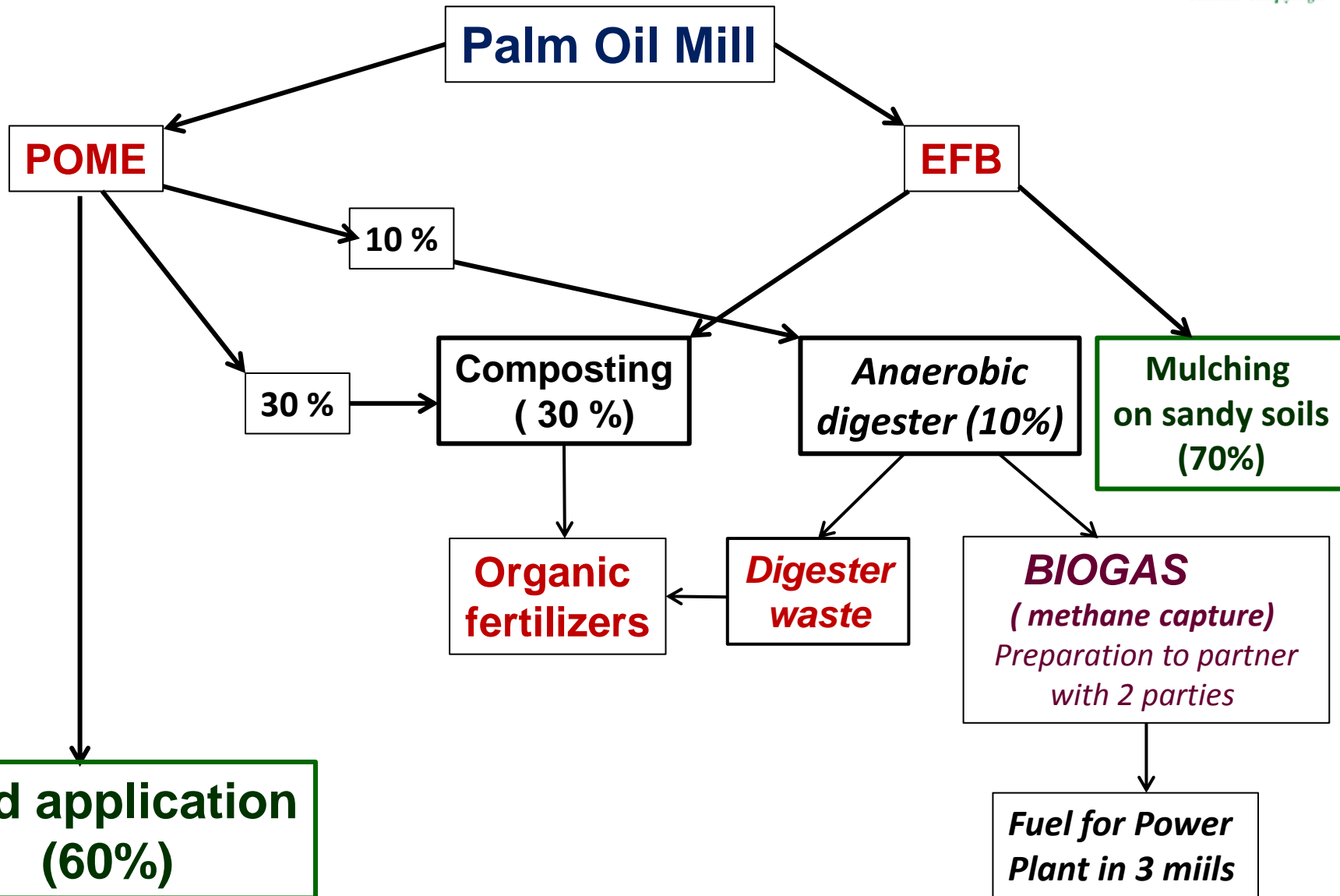
- Becoming **a member of the RSPO and ISPO**
- Conserving and preserving our surrounding environment guided by our sustainable development polices:
 - ✓ A **"zero burning" policy**
 - ✓ A **"zero waste" policy**, by recycling EFB as organic fertilizer and compost.
 - ✓ Using **land cover crops** to conserve soil moisture and minimize soil erosion.
 - ✓ **Integrating biological control into our pest management**
 - ✓ Optimize land application of POME for nutrient recycling

Planet (2)

- GHG estimation and mitigation on peat areas, with ISPO Commission
- Optimize planting on degraded lands, with low carbon stock, e.g. sandy soils, grassland
- Conservation of HCV areas, high biodiversity, steep areas, slope & river reserves
- New project development with prior SEIA & HCV, & NPP
- Synergy with BKSDA, NGOs



Zero Waste Management Strategy at PNBM



Prosperity: Productivity, Efficiency & Growth



- Focus on continuous improvements, e.g. oil extraction rate
- Introduce NPP according to RSPO P&C
 - No primary forest
 - Best practice in managing peatland & HCV
 - Social impact management plan
 - Free Prior Informed Consent (FPIC)
- Safety & Health and best practice training for productivity improvement
- Joint project with ISPO Commission on GHG emissions and best management practices in marginal soils to improve oil palm yield.

PT. Windu Nabatindo Lestari (WNL)



- Land use history
 - Heavily degraded due to formerly logging concession of PT Inhutani III, community farming, illegal mining & logging (taken from HCV report)
 - Released by the Ministry of Forestry in 1998, based on the recommendation from BPN (National Land Office) in 1998
 - Taken over in 2002: continuation of all permits
 - IUP (Plantation Business Permit): 2004
 - HGU (Land Cultivation Right Title): 2004
- Has just finished RSPO certification audit in end January 2014, with zero finding

113 00' BT

113 10' BT

Map of Land Cover 2000

PETA PENUTUPAN LAHAN PT.WINDU NABATINDO LESTARI

Kecamatan Cempaga Hulu
KAB. KOTAWARINGIN TIMUR
PROP. KALIMANTAN TENGAH



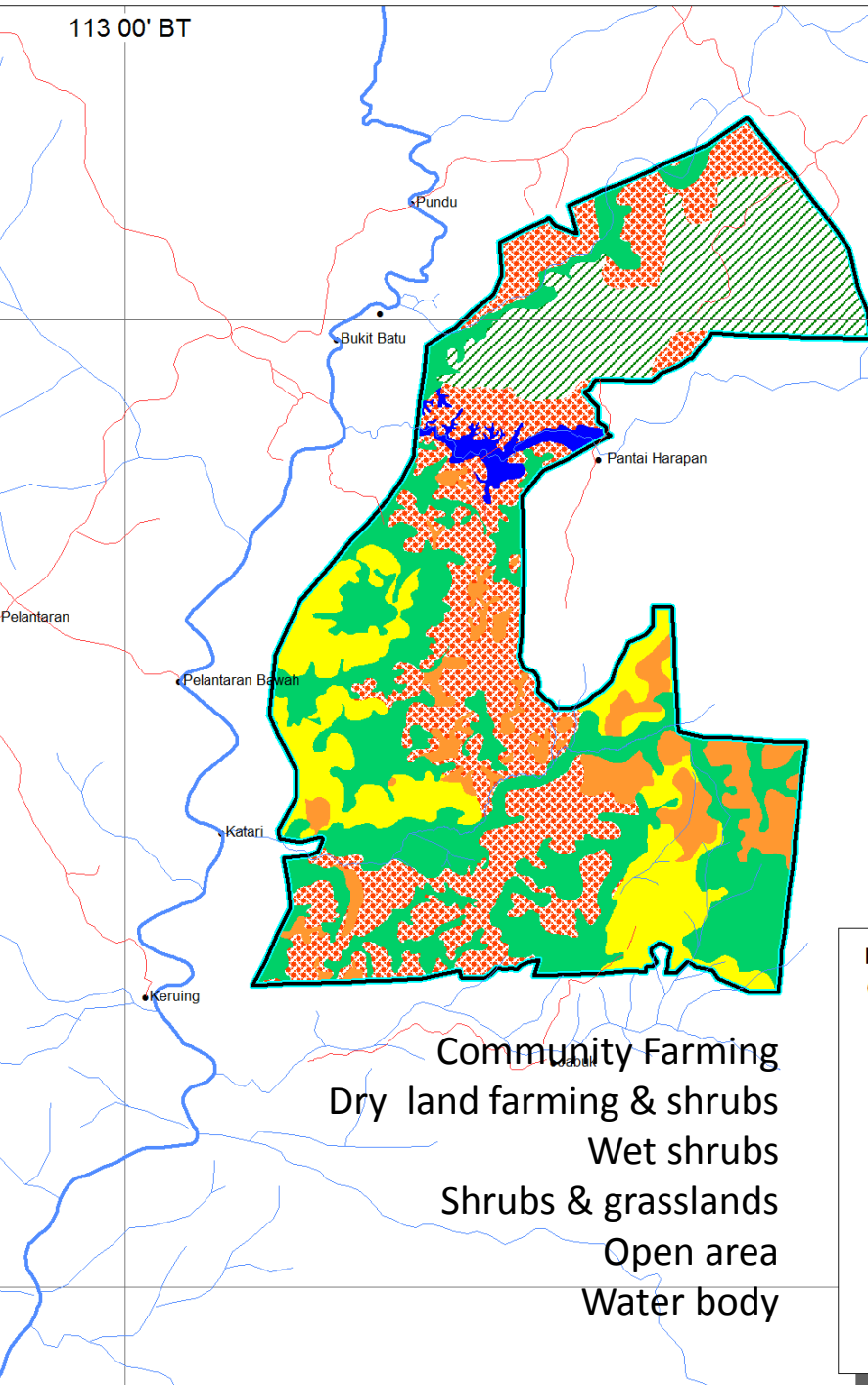
Skala : 1 : 100,000

Keterangan :

Jalan Propinsi

Sungai

HGU No. 24 PT.WNI
(9,616 Ha)



Community Farming
Dry land farming & shrubs
Wet shrubs
Shrubs & grasslands
Open area
Water body

KETERANGAN :
(Penutupan Lahan)

Perkebunan (1,589 Ha)

Pertanian lahan kering campur semak
(2,777 Ha)

Belukar Rawa (2,916 Ha)

Semak Belukar (1,301 Ha)

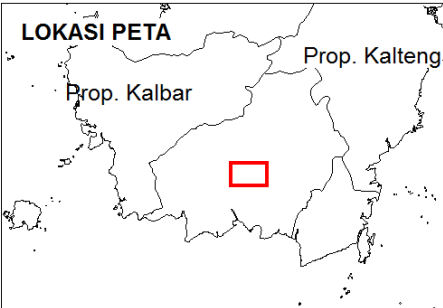
Lahan terbuka (863 Ha)

Tubuh Air (170 Ha)

Sumber data :

- Peta HGU PT.WNL

- Citra Satelit Landsat TM7 Th 2000





Bumitama Gunajaya Agro

Thank You