

Field Dialogue on Tree Plantations in the Landscape

Background Paper



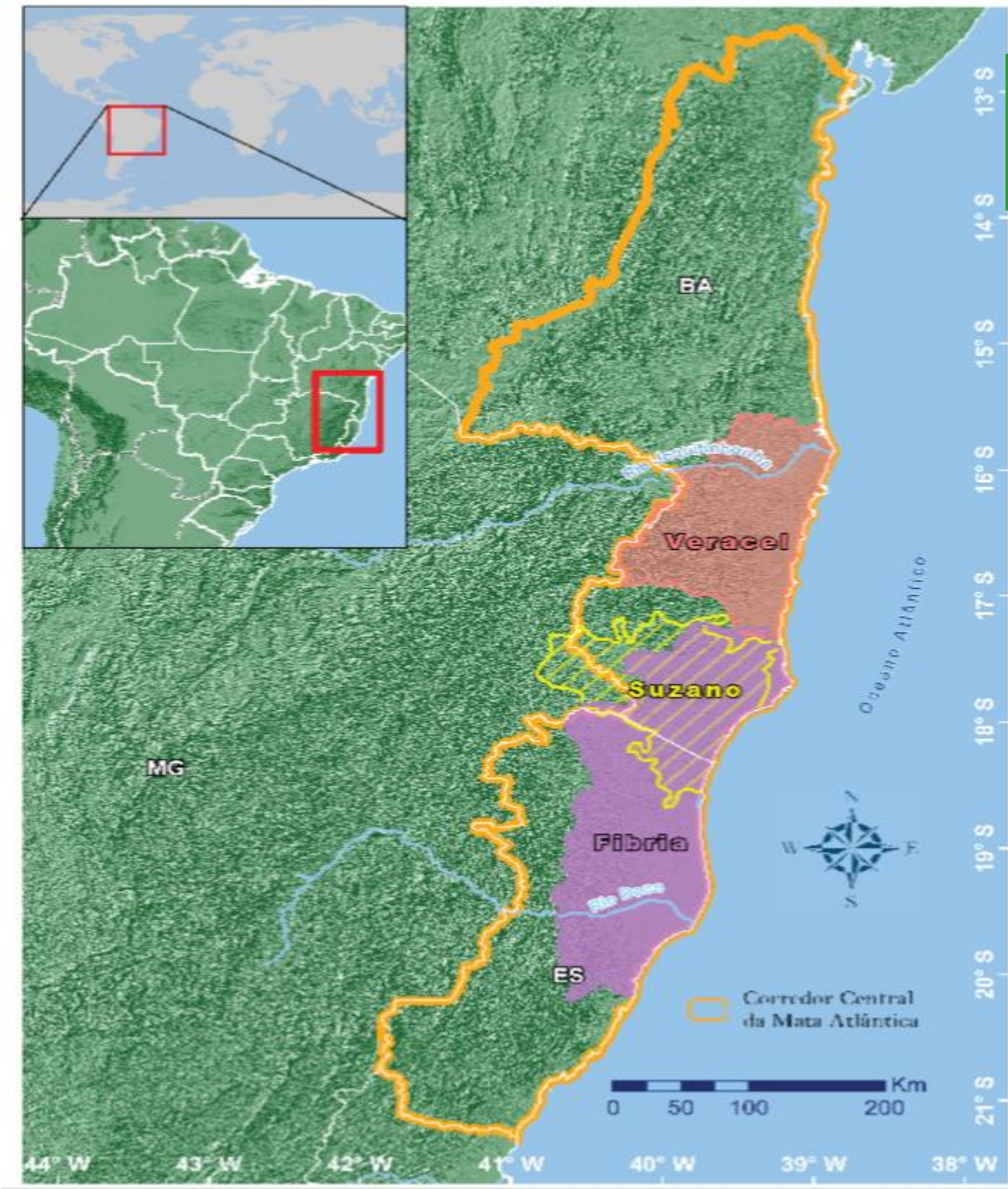
12–16 March 2018
Espírito Santo and Bahia, Brazil



Central Atlantic Forest Corridor

213 mil km² (37% marine)

95% privately owned lands.
5% protected areas (includ. Indigenous and Quilombola lands).



Central Atlantic Forest Corridor



345,000 hectares eucalyptus

124,000 hectares others, including forest remnants



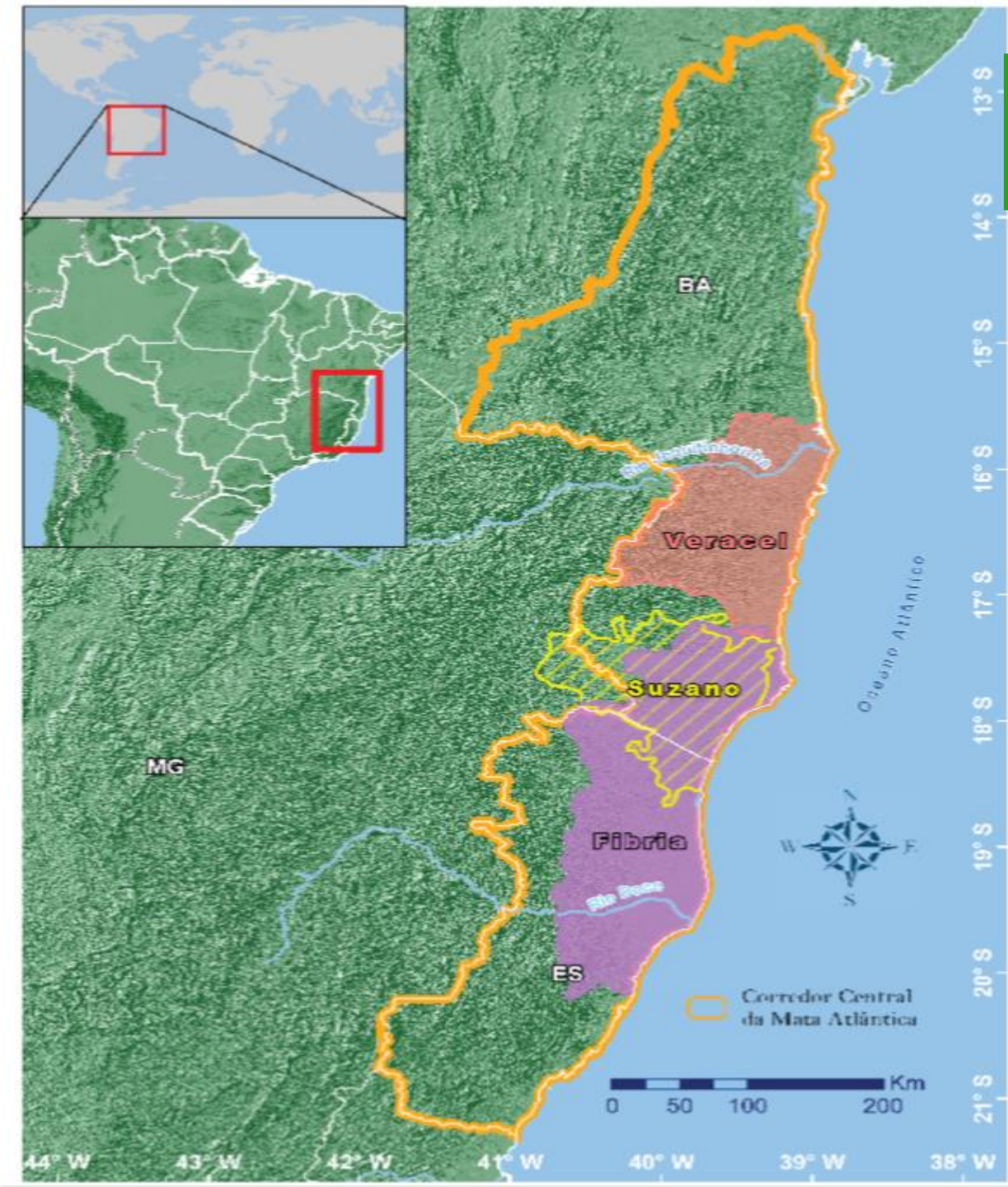
162,000 hectares eucalyptus

108,000 hectares others, including forest remnants



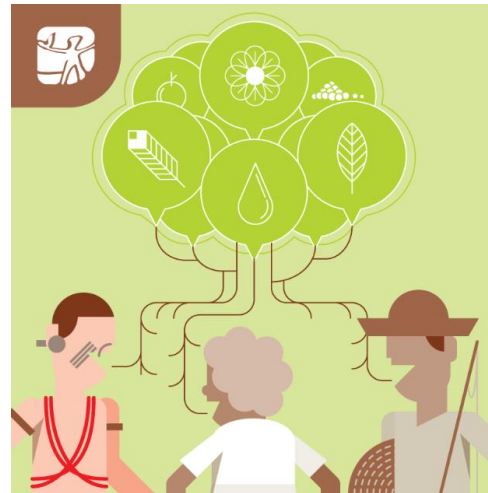
84,000 hectares eucalyptus

96,000 hectares others, including forest remnants



“To help in making important decisions, there is an extremely useful tool at our disposal; scientific knowledge. Making choices based on science can lead to measures that involve less physical effort and expenditure, while yielding more accurate results”.

Valladares-Padua & Chiaravalloti 2012



PLANTATION FORESTRY AND WATER

SCIENCE, DOGMAS, CHALLENGES.



SUSTAINABLE FOREST MOSAICS

INTEGRATED BIODIVERSITY MONITORING
AND FOREST RESTORATION GUIDELINES

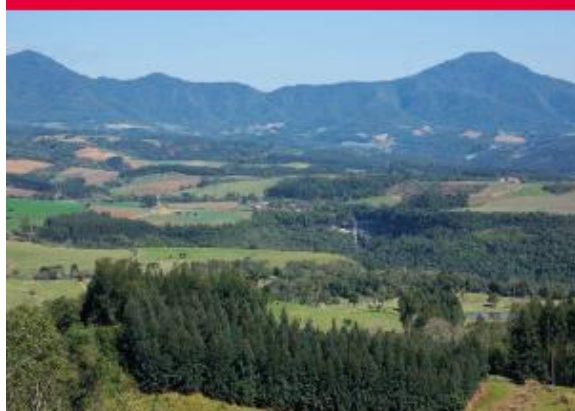


SILVICULTURE AND BIODIVERSITY



DIÁLOGO ENTRE SETORES

INTEGRANDO ESPAÇOS E PAISAGENS
DA PRODUÇÃO RURAL E CONSERVAÇÃO



SILVICULTURA E COMUNIDADES

OLHARES SOBRE O PRESENTE E O FUTURO



10 ANOS DE DIÁLOGO FLORESTAL

A EXPERIÊNCIA DO FÓRUM FLORESTAL DO SUL
E EXTREMO SUL DA BAHIA





**DIÁLOGO
FLORESTAL**

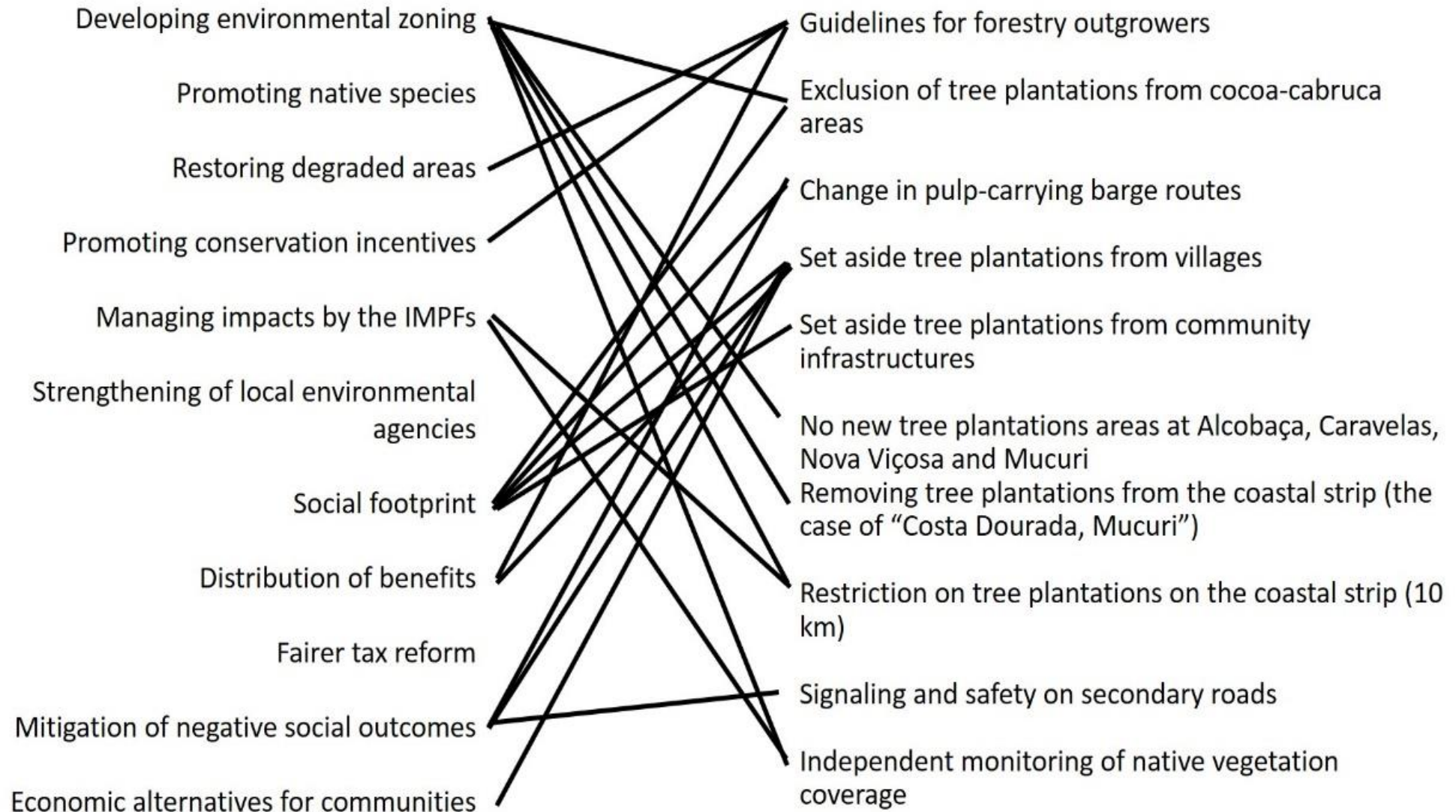
FÓRUM FLORESTAL
DO SUL E EXTREMO SUL DA BAHIA

10 formal agreements in 12 years.

Most are related to landscape approach and management.

But their implementation still a challenge!

10 years later...



Field Dialogue on Tree Plantations in the Landscape

Key priority topics

- 1. Plantation forests in the context of the global sustainable development agenda.**
- 2. The design and implantation of planted forests and forests restoration initiatives under a landscape approach.**
- 3. Approaches to enable good governance and inclusive development.**
- 4. Identifying key externalities, from the perspective of different stakeholders, associated with the development and management of plantation forests.**
- 5. The diversification of the forms and species composition of tree plantation, the sustainability of plantation forestry systems, efforts to combat climate change and to amplify conservation, access to and use of new technologies**