

Dialogue Day 1

Field Dialogue on Climate Positive Forest Products (CPFP) - Mass Timber



12-15 September 2022

Porvoo & Helsinki, Finland

#CPFPFinland





Agenda – Overview

Wednesday Dialogue Day 1

- Forests and Land Use
- Manufacturing, Construction, Design, and Built Environment
- Identifying Key Topics

Thursday Dialogue Day 2

- Strategies + Actions
- Conclusions and Next Steps

Morning Program

9:00 Session I Opening

- Field Visit Co-Chair Summary
- Reflections from Participants

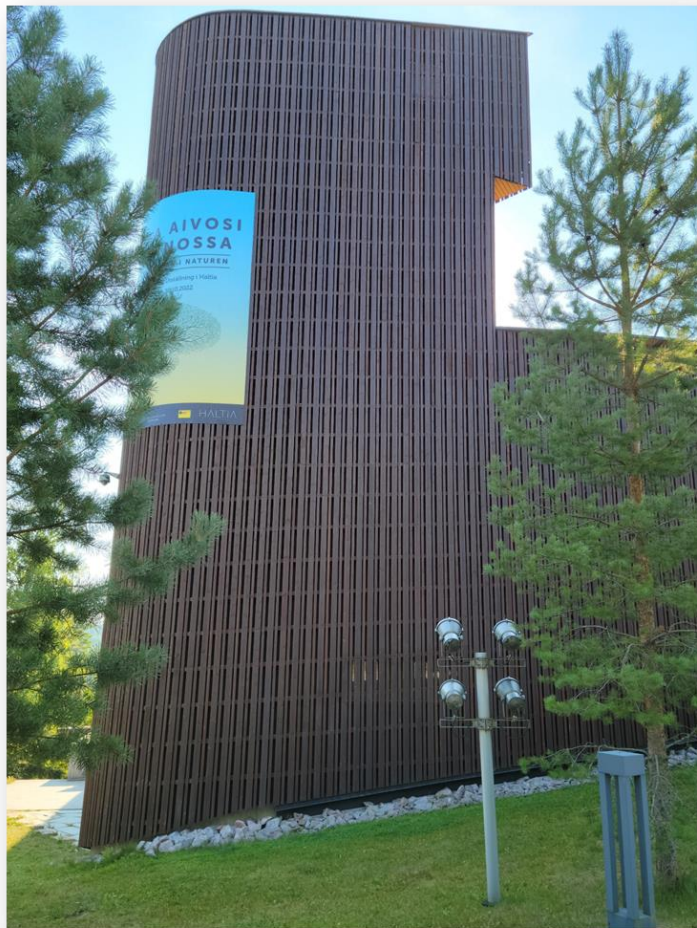
10:00 *Coffee*

10:20 Breakout Discussion I

- Digging Deeper: Forests & Land Use
- Report Back

12:00 *Lunch*





Dialogue Ground Rules

TFD Operates under the Chatham House Rule

"Participants are free to use the information received, but neither the identity nor the affiliation of the speaker(s), nor that of any other participant, may be revealed".

- The “Spirit” of dialogue
- Practice active listening
- Participate as individual
- Take space, make space
- Virtual engagement
- Help define and own the outcomes



New Participant Introductions

Name, Organization, Location
- Your Expectations



Field Visit Co-Chair Summary

It All Starts in the Forest

We saw three different forests at the stand level:
commercial, protected, family forest.

Drew us to consider:

- What is the connection between forest management and forest products?
- What are alternative forest management strategies other than what we observed?
- What are remaining environmental, social, and climate concerns?



It All Starts in the Forest



Reflected on:

On **alternative management scenarios** :

- managing for **carbon** (driven by EU policy discussions)

- managing for **biodiversity**

- continuous forest** (harvest mosaic patches rather than thinning small diameter trees)

The role of **landscape scale** management: conservation scale and connectivity

Time horizon (60-100 year rotations) means demand is unlikely to prompt a change in forest management and management should consider future generations

The Reality of Manufacturing and Processing: 'It's Crazy'

We learned about the process of converting raw materials to mass timber elements and fabrication of mass timber panels at **Timber Point**

Drew us to consider:

- Interconnectivity of the wood products markets: One log that creates a mass timber element will also include wood that is diverted to other, integrated wood supply chains.
- The development of the supply chain in Finland- multiple specialized points



The Reality of Manufacturing and Processing: 'It's Crazy'



Reflected on

New developments in the manufacturing industry: Mass timber products (and markets) today are not the mass timber we will see in the future.

Currently a highly customized industry: the manufacturing side (each manufacturer produces different CLT, they have a variety of unique demands from demand side).

Workforce dynamics: Manufacturing and pre-fabrication limits the workforce needed to build with mass timber but introduces a new skillset to building construction

Is Hybrid the Way to Scale Up?

We witnessed the **active construction** of a mass timber building and experienced a **completed structure** nearly 10 years old

Drew us to consider:

The +/- of hybrid structure model

The importance of sustainability and role of public demand

Potential for disconnect between design and construction phase: cause shift in material use.

Path dependencies in construction and design sector linked to labor force and material use.



Is Hybrid the Way to Scale Up?



Reflected on

Disconnect between architects, builders and the industrial process that can limit mass timber structures' positive impact

There are gaps in the current tools that track carbon from raw materials up through construction

How would we be framing this conversation differently / how would we be designing differently if there were robust systems for recycling wood in construction?

Thought experiment



Stakeholder Perspectives

What is the question remaining for you after the field visits?
What are you concerned about that has not been brought forward yet?

Coffee Break

Breakout Questions focused on Forests and Land Use

- What are current and potential impacts of forestry on forests that we have concerns about?
- What is being done well and what needs to be improved related to forest and land management?
- What are the challenges, barriers, and innovations from other points in the supplychain that impact forests and land use?

Coffee Break

Afternoon Program

13:30 Breakout Discussion II

- Digging Deeper: Manufacturing, Construction, Design, and Built Environment

14:30 Report Back

15:10 Break

15:30 Plenary Discussion: Key Challenges

16:30 End

18:00 Dinner (26 minute walk from hotel)



Breakout Questions focused on Manufacturing, Construction, Design and the Built Environment

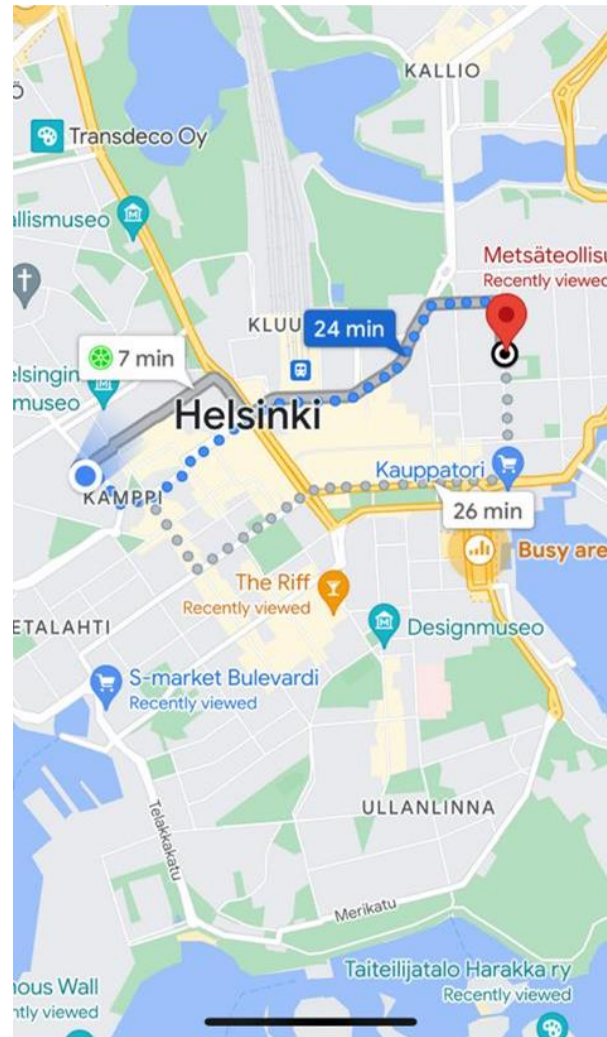
- What are current and potential challenges to increasing the use of wood in buildings?
- How do you ensure use of wood in buildings is climate smart?
- What is being done well and what needs to be improved?

18:00 Dinner

Address: Snellmaninkatu 13, FI-00170 Helsinki

Meet at the location above. Those walking,
we leave the hotel at 17:30

(26 minute walk from hotel)



Dialogue Day 2

Field Dialogue on Climate Positive Forest Products (CPFP) - Mass Timber



12-15 September 2022

Porvoo & Helsinki, Finland

#CPFPFinland



Morning Program

9:00 Plenary Discussion

- Final Day Expectations
- Prioritizing Key Topics

10:00 *Coffee*

10:30 Breakout Discussion

- Carousel: Strategies + Actions

12:00 *Lunch*

13:00 Plenary Discussion

- Report Back + Reflections

14:00 Plenary Discussion

- Key Takeaways + Next steps

15:00 *Adjourn*



Breakout Discussion: Key Topics to address

- 1) What are the needed strategie(s)?*
- 2) What is already happening on this topic?*
- 3) What are the roles of various stakeholders in taking this action forward?*

Forests

- Public perception and social licence to operate:
 - Coordination of public perception on use of wood in forestry + building environment
 - Negative perceptions of forestry operations will not lead to positive perceptions on with wood
 - Public perception often doesn't align with science and data- what makes a good environmentalist- conserving or using wood products
 - How do we ensure forestry and social license to operate
 - Communication on three things: sustainable forest management, sustainable wood management, and public perception/acceptance of wood.
 - How do we ensure social license to operate in forestry (lots of sustainability aims , controversial information) and secure wood supply for building.
 - Having a strong product statement and living up to it is proudly!
- Biodiversity in forest management
 - Ecological silviculture instead of extractivism for timber product.
 - How to better balance biodiversity and production objectives in Finland including zoning areas for protections, and related financing?
- Forest Safeguards:
 - To safeguard mass timber construction you have to safeguard forest and that requires sustainable forest management for biodiversity and social and traceability.
 - EU; meeting the reporting requirements to safeguard sustainability
- Clarify human health implications:
 - Biophilia is nice and fine- We know forest is nice and health to be in, what does wood actually do for us, wood in buildings has positive health impacts, reducing heat islands
 - Prove it! Don't forget about health implication- in addition to EPDs, we need HPDs
 - Health : what does wood do for human health, out-heat island.
- Politics

Manufacturing

- Engineered wood, increase use efficiency:
 - Log recovery for CLT is 30%, vs, CLT can use damaged trees, beetle killed trees, salvage trees.
 - Can engineered wood in the near future be made from small diameter stems that are used for energy/pulp today.
 - Is there a climate smart engineered wood product on the near future that uses small stems.

Buildings

- Public perception of wood buildings:
 - How do we avoid creating negative social perceptions and make wood inclusive going forward. For example wood only for the rich/ wood only for public buildings / social housing.
 - Social perceptions going forward (not only backwards), policies finland housing timber is rented, owned is concrete- what could this lead to down the line.
- Hybrid buildings:
 - how do we work with other materials- the future is hybrid
 - Use the narrative of hybrid buildings as a tool to grow the coalition of positive voices of increase wood in construction.
- Skills training:
 - Industry and labor needs training and education in climate smart technologies, especially in guidelines
 - Education; public on carbon positive use of wood and architects on designing wood hybrid and builders
- Incentives to build with wood:
 - Price of wood might stall building of wood - need for policy objective to build with wood should not be left to the market.
 - Incentivise more carbon construction and more lobbying to climate policy makers on carbon benefits of mass timber.
- What is the city we want, dense traversable, modest in height and size. What is the density, interconnectivity, and scale of city that people in the future want?
- Solid wood recovered from the log represents a small percentage of biomass. How do we increase the value or utility of the material?
- Global face for mass timber “Sanna Marin”.
- Scoping definition of how we use wood in our built environment

Cross Cutting

- Bermuda triangle of design, prefabrication, and construction - these are three needed elements of wood construction.
- Cross value chain education:
 - Value proposition. A more coordinated agenda to improve knowledge transfer across different stakeholders and across regions globally.
 - Education - teach science and philosophy across disciplines and sectors.
 - Identify and prioritise enablers to foster prompt knowledge sharing across the whole
- Better transparency and data. And better education in how to use and interpret data.
- Mandatory disclosure of environmental impacts and values. Would raise education, build trust, incentive low carbon and ethical material, and improve background data and methods.
- How do we define and quantify carbon smart construction. Evidence is not clear enough yet.
- Need for diversity:
 - Forest, Wood Product, Building Typology, Coexistence (Materials, narratives)
- Coalition of the willing to move this agenda ahead:
 - To advance the cause; we need a clear coordinated and coherent message and plan of action across all stakeholders
 - What can we agree on - focus on our convergent lines and as an urgent coherent message
 - Multiple actors working on multiple areas to advance innovation, data, implementation, and education
 - Focusing on one area will not overcome barriers in other areas
 - Don't let perfection be the enemy of the good - move faster - scale

Prioritized Key Themes – Carousel

1. **Scoping Definition** of how we use wood in our built environment. (13).
 - Matti
 - Front Right

2. **Future City** What is the city we want, dense traversable, modest in height and size. What is the density, interconnectivity, and scale of city that people in the future want? (13)
 - Edie
 - Front Left

1. **Public perception and social licence to operate in Forests:**(13)
 - Lauri
 - Back hallway

1. **Engineered wood**, increase use efficiency (12)
 - Ana
 - Back Right

1. **Coalition of the willing** to move this agenda ahead (12)
 - Rod
 - Hallway

Breakout Discussion: Key Topics to address

- 1) What are the needed strategie(s)?*
- 2) What is already happening on this topic?*
- 3) What are the roles of various stakeholders in taking this action forward?*

Key Topics Carousel

Report back + Reflections



Key Takeaways

What are your ...

- (1) Learnings
- (2) Actions



CPFP Dialogue Coordination and Support

CPFP Advisory Group

Ana Bastos - URBEM Brazil

Stephanie Burrell - World Economic Forum

Caitlin Clarke - BTG Pactual

Gary Dunning - The Forests Dialogue

Norbert Henninger - World Resources Institute

Robyn van den Heuvel - CSFEP

Jamie Lawrence - CSFEP

Anna-Liisa Myllynen - Stora Enso

Sami Oksa - UPM

Alan Organschi - Yale School of Architecture

Rachel Pasternack - The Nature Conservancy

Tena Petrović - Climate KIC

Barbara Reck - Yale School of the Environment,

Rod Taylor - World Resources Institute

Climate Smart Forest Economy Program Collaborators



WORLD
RESOURCES
INSTITUTE



Dalberg



Convener and Host Organizations



Dialogue Co-Chairs and Team



Ana Bastos - URBEM



Lauri Linkosalmi – Stora Enso

Mai Souminen – WWF Finland

Rod Taylor – World Resources Institute



Background Paper Authors

Edie Sonne-Hall

Barbara Reck



+ Support from the TFD Team

-Gary, Liz, Luca and Ismini



Featured Videos



For More On TFD:

TFD Videos



Available at: www.youtube.com/user/TheForestsDialogue

TFD Documents and Publications



Available at: www.theforestsdialogue.org



Follow us on Twitter: [@forestsdialogue](https://twitter.com/forestsdialogue)



Like us on Facebook: [the forests dialogue](https://www.facebook.com/the-forests-dialogue)



Email us at: info@theforestsdialogue.org

TFD Address and Phone

The Forests Dialogue

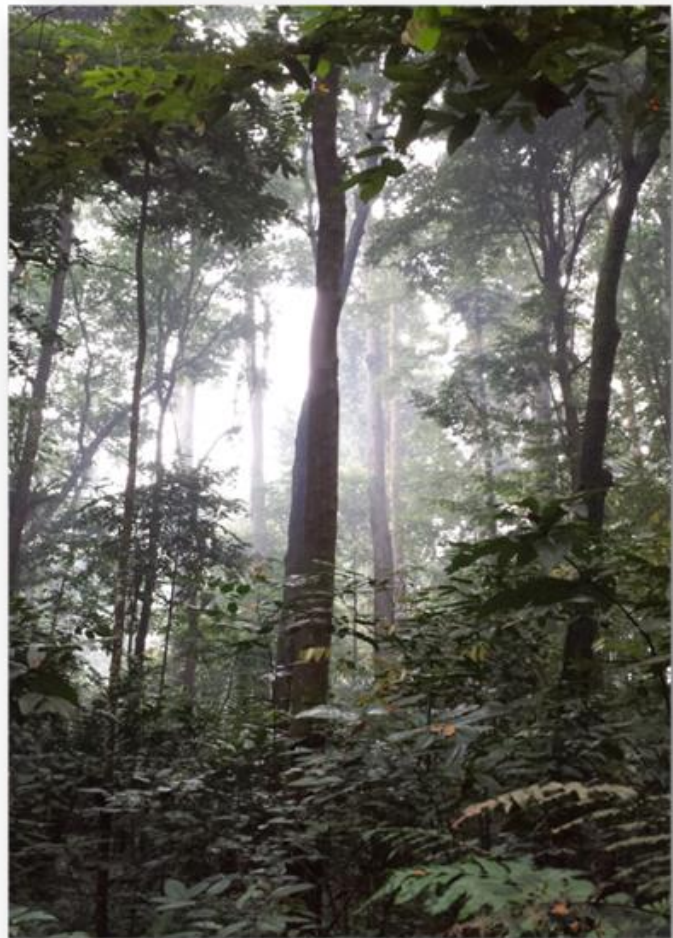
Yale University

360 Prospect Street

New Haven, CT, USA 06511

+1 203 432 5966





Kiitos!

#CPFPFinland