



***WELCOME  
TO  
THE PARTICIPANTS  
OF  
THE FOREST DIALOG***



***Your partner in community  
forest management***

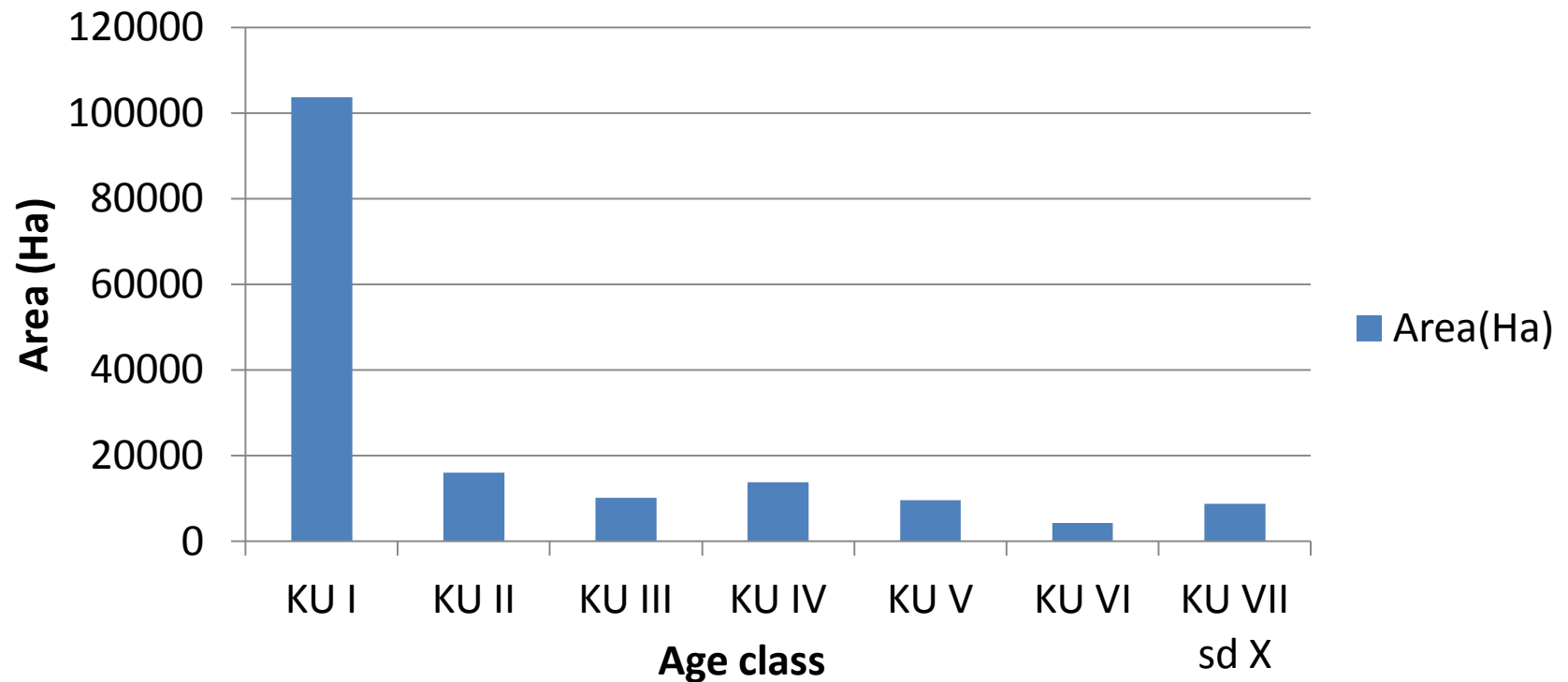
**[www.dipantara.net](http://www.dipantara.net)**

- Yogyakarta : Jl.Ringin Raya 14, Condongcatur ,Yogyakarta.
- Gunungkidul : Jalan Raya Nglipar-Ngawen KM 6,Dusun Wotgalih,  
Desa Pilangrejo,Kec Nglipar, Kab Gunungkidul.

# Why community forest???

- De-forestation of state forest (especially in Java) obliges community forest held larger role.
- Existence of community forest, especially in Java still be very potential (as source of raw material and for supporting the environment).
- Through community forest people's income can be increased.

# Condition of state forest in Central Java



# Community forest in Java

Province	Area (Ha)
West Java/Banten	1,210,000
Central Java	747,000
DIY	111,000
East Java	641,000
Total	2,709,000

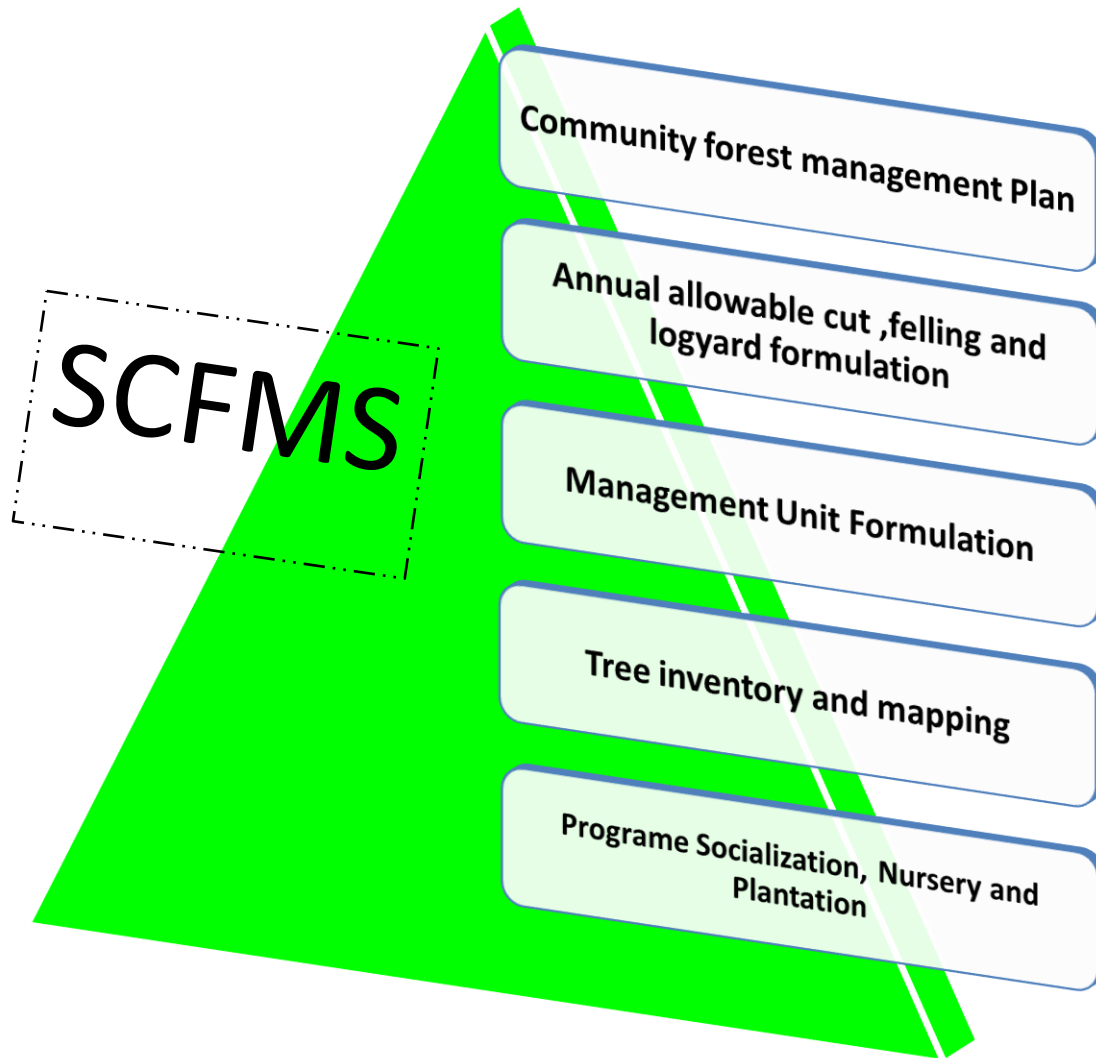
# Dipantara

- Organization or company which concern at effort of sustainability of community forest management, by building sustainable forest management system.
- Organization or company which merges sustainability aspect and usage aspect proportionally.
- Organization or company which more emphasises at community empowerment.

# Brief history of Dipantara

No.	Year	Description
1	2006	Establishment of Dipantara, started in Pacitan (East Java) for Pine. Notary Act No.09, dated April 22 nd 2006.
2	2007	Trial operation in Gunung Kidul for Teak, started by 10 farmer groups. Since October supported by TFT.
3	2008	Soft loan finished at the end of July. First sale to one buyer (PT Nagabuana) for approx 30 m3 and stopped.
4	2009	Buyers grow up to 4 and sales volume up to 600 m3.
5	2010	First Annual Working Plan with AAC= 1,118 m3. Notary Act No. 09, dated October 25 th 2010. Buyers grow up to 8, with sales volume up to 1100 m3.
6	2011	Second Annual Working Plan with AAC = 1,790 m3. FSC Certification audit held on 4-6 May 2011.

# Sustainable Community Forest Management System

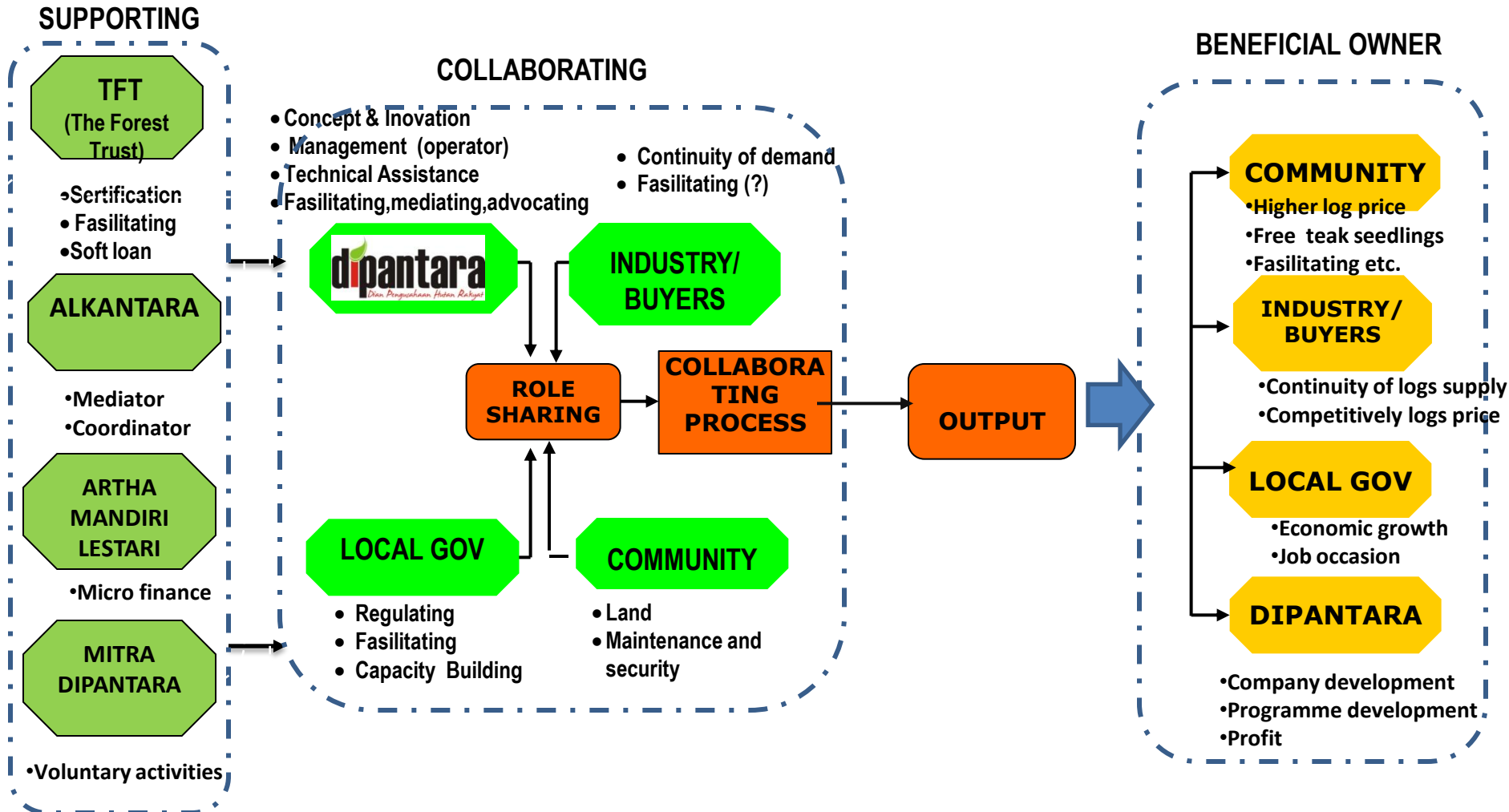




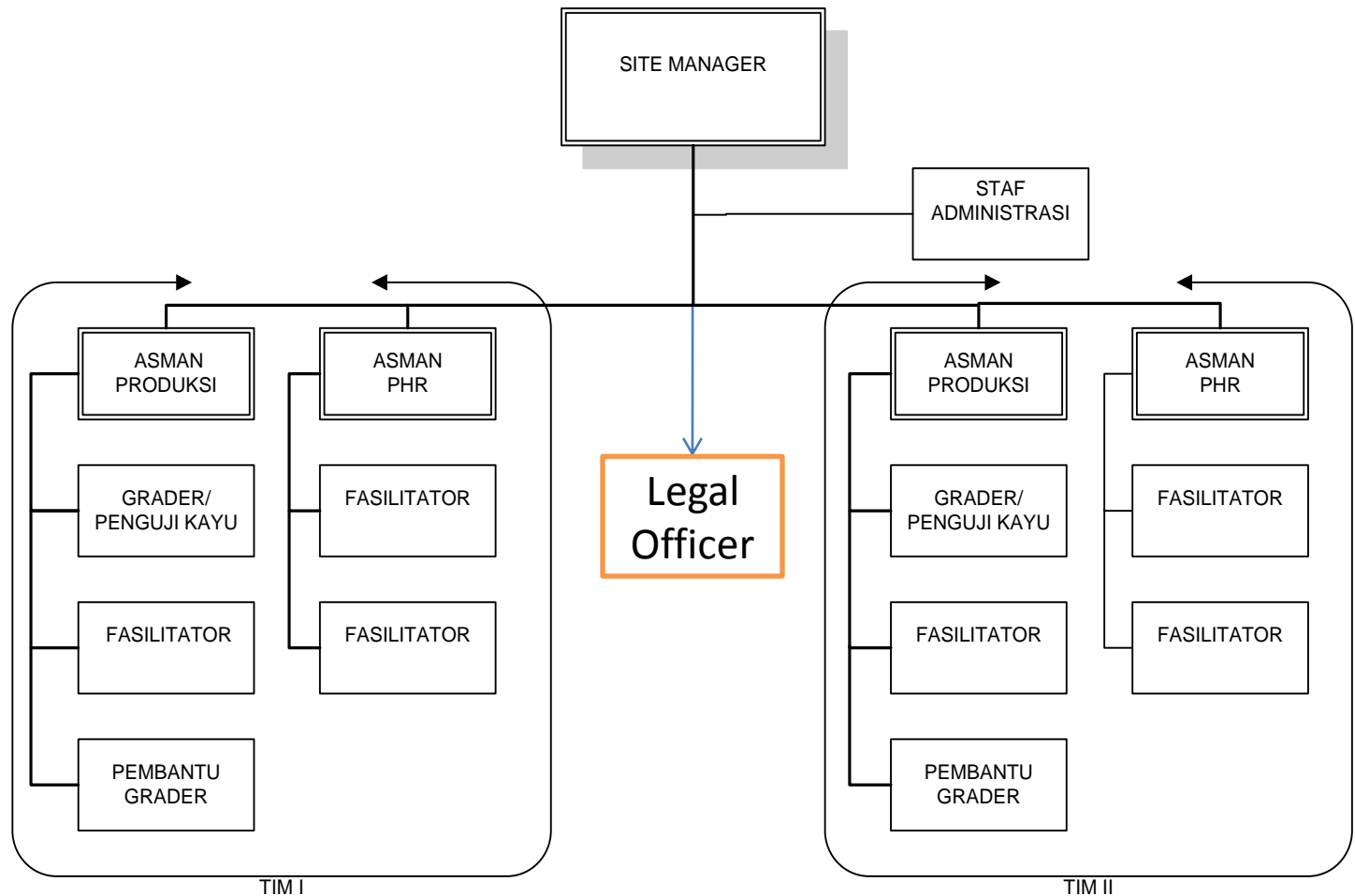
# How to develop the system???

- Collaborating among stakeholders, which interest in community forest.
- Find the supporting agencies (TFT) to support the collaboration.
- Operating, developing and maintaining collaboration by operator (Dipantara as operator)

# Collaboration in community forest management system



# Organizational Chart



# GROWTH OF FARMER GROUP

No.	Year	Amount of farmer group
1	2008	10
2	2009	37
3	2010	37
4	2011	71
5	2012	96
6	2013 (projection)	126

# GROWTH OF STANDING STOCK

Year	Volume (m3) on Circumferences (cm).....					
	60-69	70-79	80-89	90-99	100 up	Total
2009	(4,935)				2,565	7,500
2010	(10,507)				5,464	15,971
2011	6,901	5,901	5,329	4,250	11,722	34.103
2012 *)	10,000	9,000	8,000	6,000	17,000	50,000

# GROWTH OF ANNUAL ALLOWABLE CUT & SALES

No.	Year	AAC (m3)	Sales (m3)
1	2009	620	617
2	2010	1,118	1,135
3	2011	1,790	873
4	2012 *)	2,000	1,800

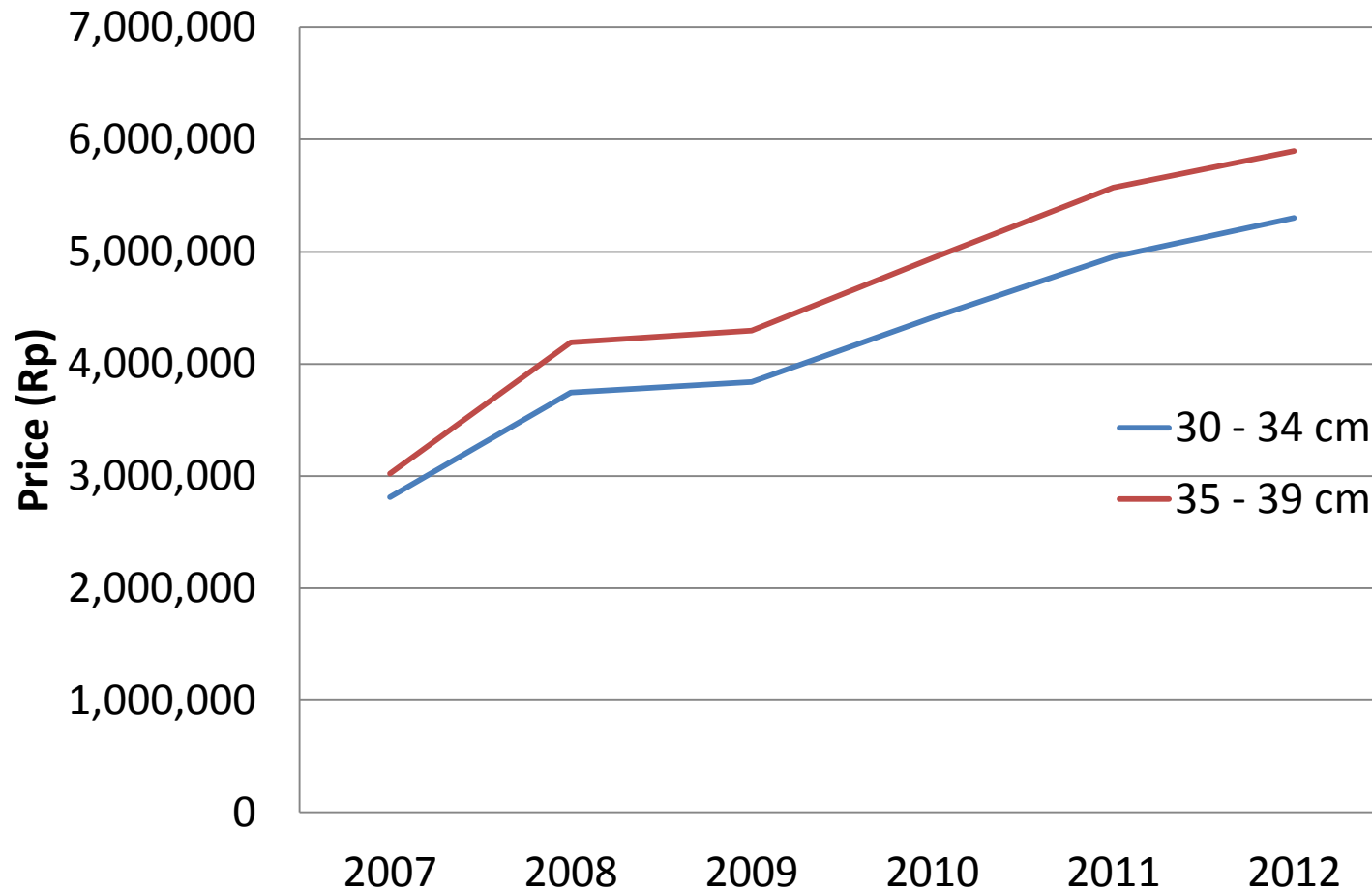
\*) Projection

# GROWTH OF BUYERS

No.	Year	Amount of buyer
1	2008	1
2	2009	4
3	2010	12
4	2011	12
5	2012 *)	15

\*) projection

# GROWTH OF PERHUTANI'S TEAK PRICE (2007-2012)





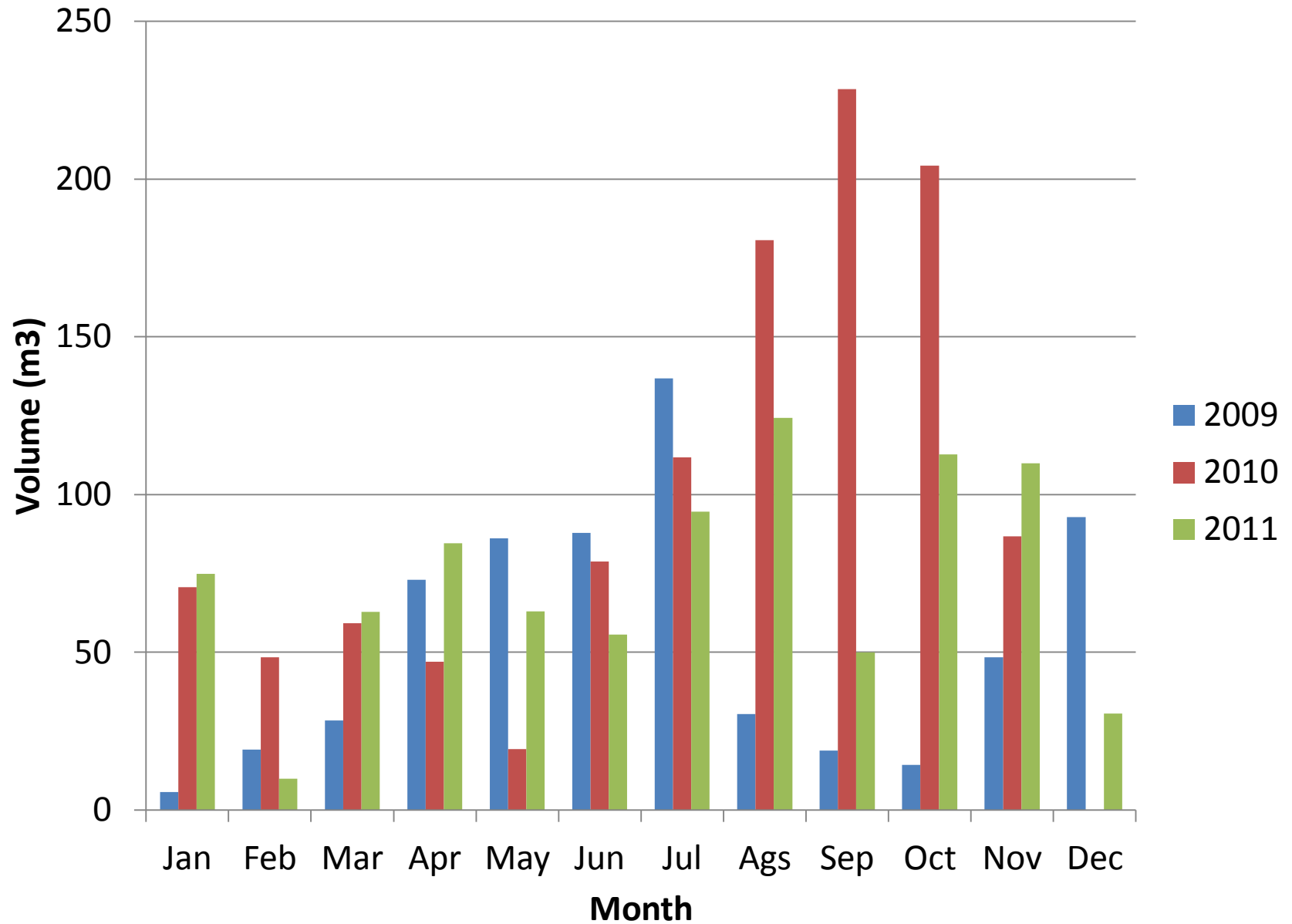
# Perhutani's Logs price vs Dipantara's Logs price (2011)

Class	Dia (Cm)	Length (m)	Quality	Price per m3 (Rp)		
				Perhutani	Dipantara	Diff (%)
A3	30 - 34	1,00 to 1,90	T	4,954,000	3,850,000	22
A3	35 - 39	1,00 to 1,90	T	5,573,000	3,850,000	31
A2	25 - 28	1,00 to 1,90	T	3,786,000	2,850,000	25

# Local logs price vs Dipantara's buying price (2011)

Class	Dia (Cm)	Length (m)	Quality	Price per m3 (Rp)		
				Local	Dipantara	Diff (%)
A3	30 - 39	1,00 to 1,90	T	3,000,000	3,450,000	15
A2	22 - 28	1,00 to 1,90	T	1,900,000	2,450,000	29
A1	13 - 19	1,00 to 1,90	T	1,000,000	1,350,000	35

# Sales per month 2009 - 2011



# Dipantara's activities :





Teak nursery

28 15:51





**Tree inventory  
(all trees with 60 cm diameter and up  
should be measured)**

**11 16:46**





A place where girdling of the trees  
should be measured  
(130 cm height)





**Tree number at Sengon (Albizzia)**

2008/04/16





**Logs ready for sale at Logyard Katongan**





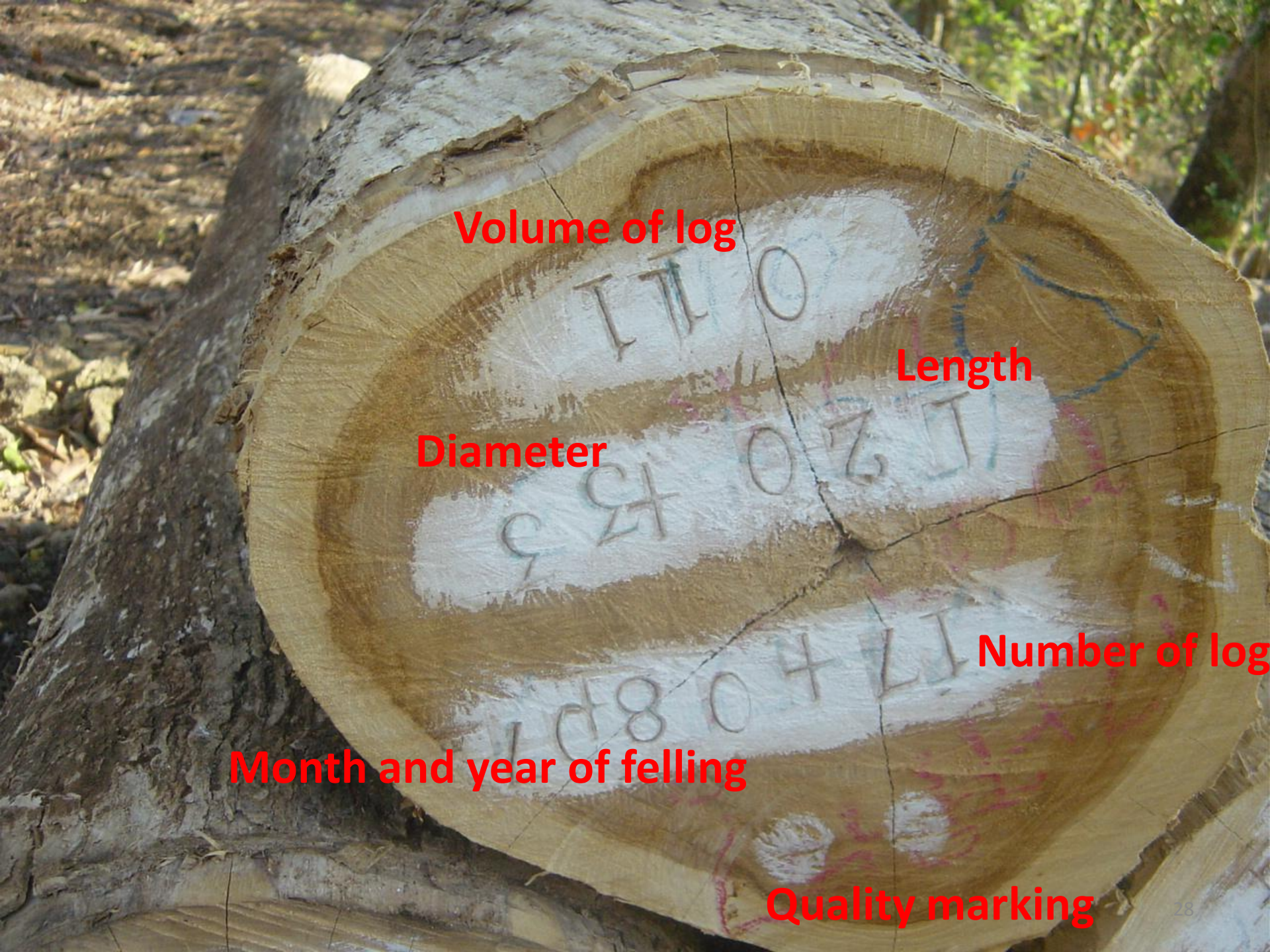




**Debarking for measurement**

**Scalling and grading based on  
Indonesian National Standard**





Volume of log

Length

Diameter

Number of log

Month and year of felling

Quality marking



Logyard : Natah

**Logs ready for sale at Logyard Natah**

**11 16:09**





**Logs ready for sale at Logyard Katongan**



**Thank you  
for your attention**