



# Forests/Biomass/Fire:

---

**16 June 2025**  
**Yale Forestry Dialogue Field Tour**

SUSTAINABLE  
NORTHWEST

The logo for Sustainable Northwest, featuring a stylized green tree with a circular arrow around it, symbolizing sustainability.

# About Sustainable Northwest

---



## CLEAN ENERGY

*Advancing locally driven and equitable clean energy solutions.*



## FORESTS

*Developing nature-based solutions for healthy and resilient forests.*



## WOOD MARKETS

*Building markets that connect the built environment to healthy forests.*



## REGENERATIVE RANCHING

*Supporting farmers & ranchers to produce food in harmony with nature.*



## WATER

*Helping communities balance water use from headwaters to the ocean.*

Started more than 30 years ago (1994) working on issues of water and ranching in Klamath County

- Now have 5 program areas
- We've worked with more than 24 Tribal Nations in the past 30 years
- Currently working with 17 Tribes



# Longview, WA -

---

**Overlook Weyerhaeuser  
Operations and the Port of  
Longview.**

**Chinook Nation welcome.**





# Mt. St. Helens Learning Center – Weyerhaeuser

---



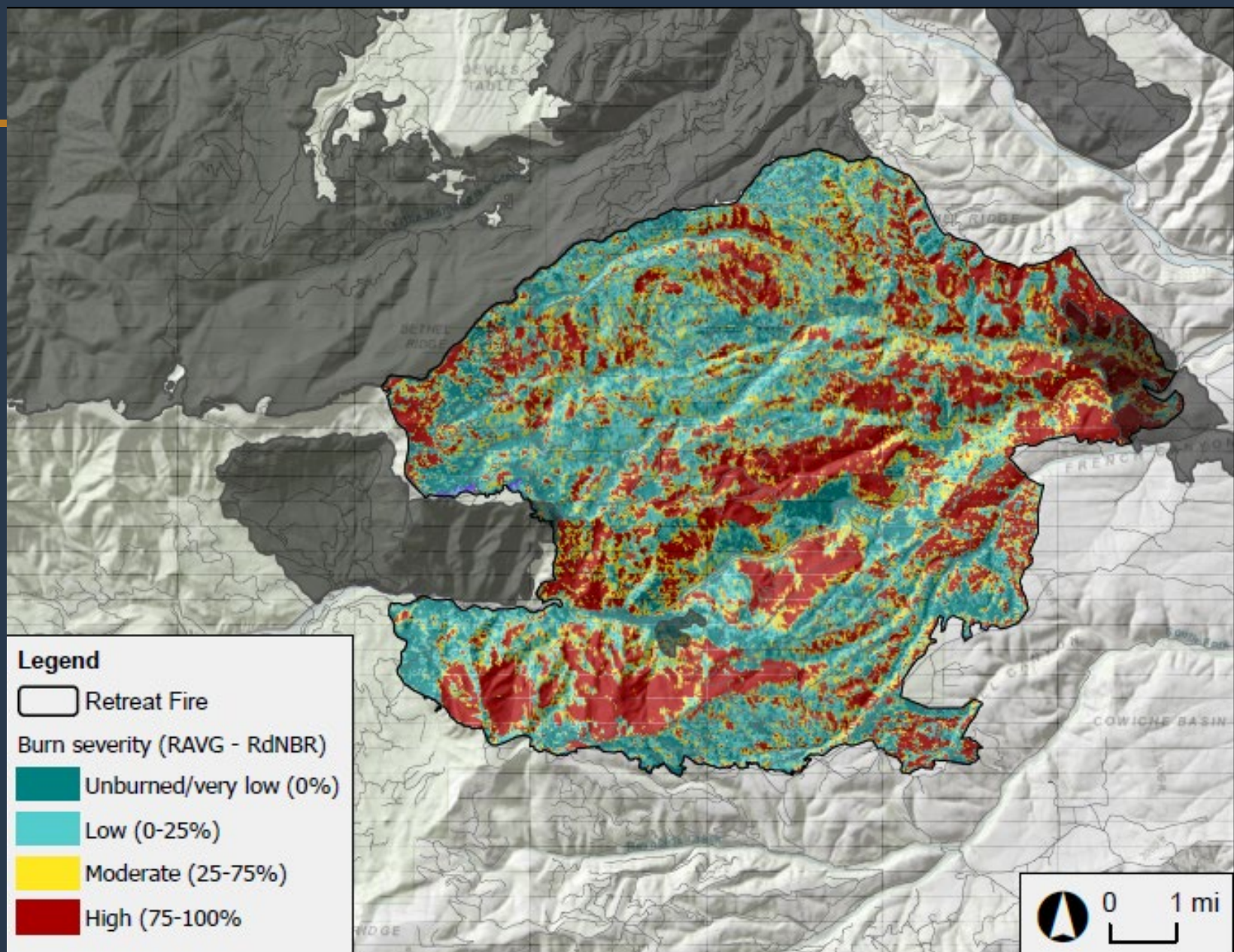


# Port Blakely

---

## Private Landowner







# Retreat Fire

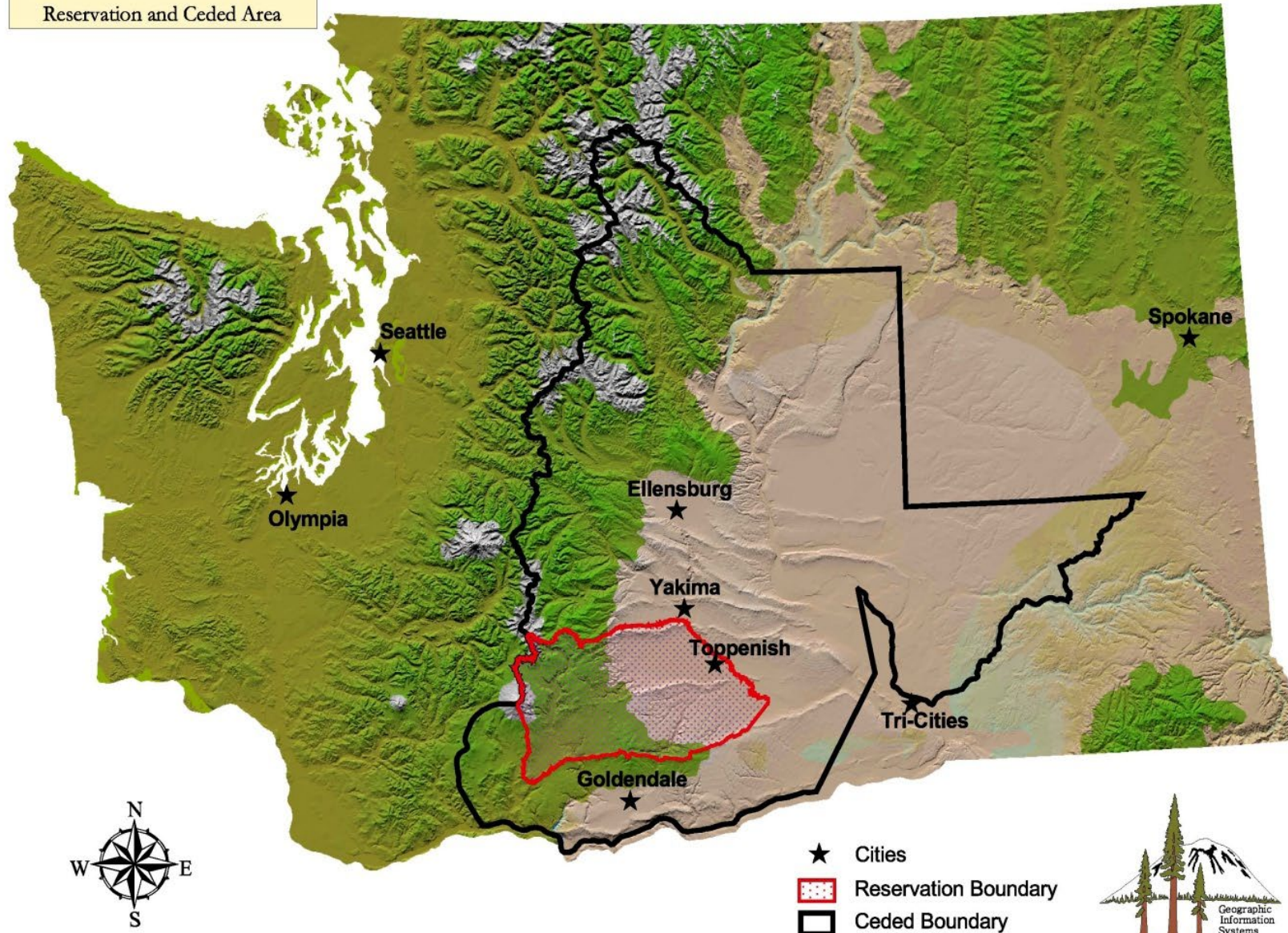
---





# Yakama Nation

Reservation and Ceded Area





# Simmon Butte

---





# Thoughts? Questions?

---

