

Welcome to the

Field Dialogue on Food, Fuel, Fibre and Forests (4Fs) in Finland

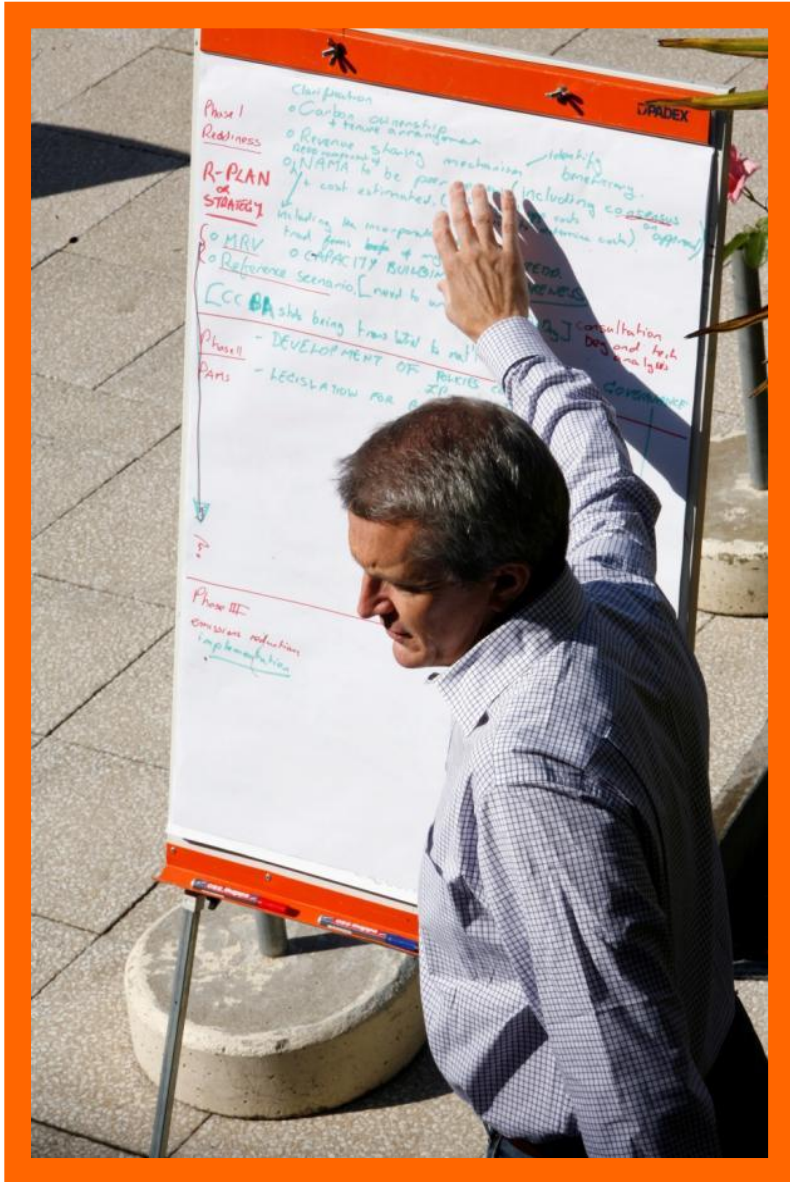
2-5 September 2014

Punkaharju, Finland

#4FFinland @forestsdialogue



Today's Program



Morning Co-chair: Anders Portin

09:00 Opening and welcoming –Anders Portin

09:15 The Forests Dialogue and 4Fs Initiative- Gary Dunning

09:45 International Context on 4Fs- Rod Taylor

10:15 Plenary Discussions: Key issues related to 4Fs globally

11:00 Coffee Break

11:30 Presentations on Finland Context:

Co-chairs' reflections on the field trip

Plenary Response

12:30 Lunch Break

Afternoon Co-chair: Rod Taylor

13:30 Plenary discussions: Lessons learnt from Finland on managing Food, Fuel, Fiber and Forests

14:30 Breakout Group Session I: Based on experiences in Finland, what are ways forward for advancing Food, Fuel, Fiber and Forests globally

16:00 Break

16:30 Breakout group reports and plenary discussion

17:15 Adjourn for the day

17:45 Tour in the Lusto Museum

18:45 Group Dinner

4Fs Initiative

Finland Dialogue Hosts and Sponsors





Welcome

Dialogue Co-Chairs

- Anders Portin - FFA
- Juha Hakkarainen – MTK
- Rod Taylor – WWF
- Miriam Prochnow - BFD



The Forests Dialogue

Purpose

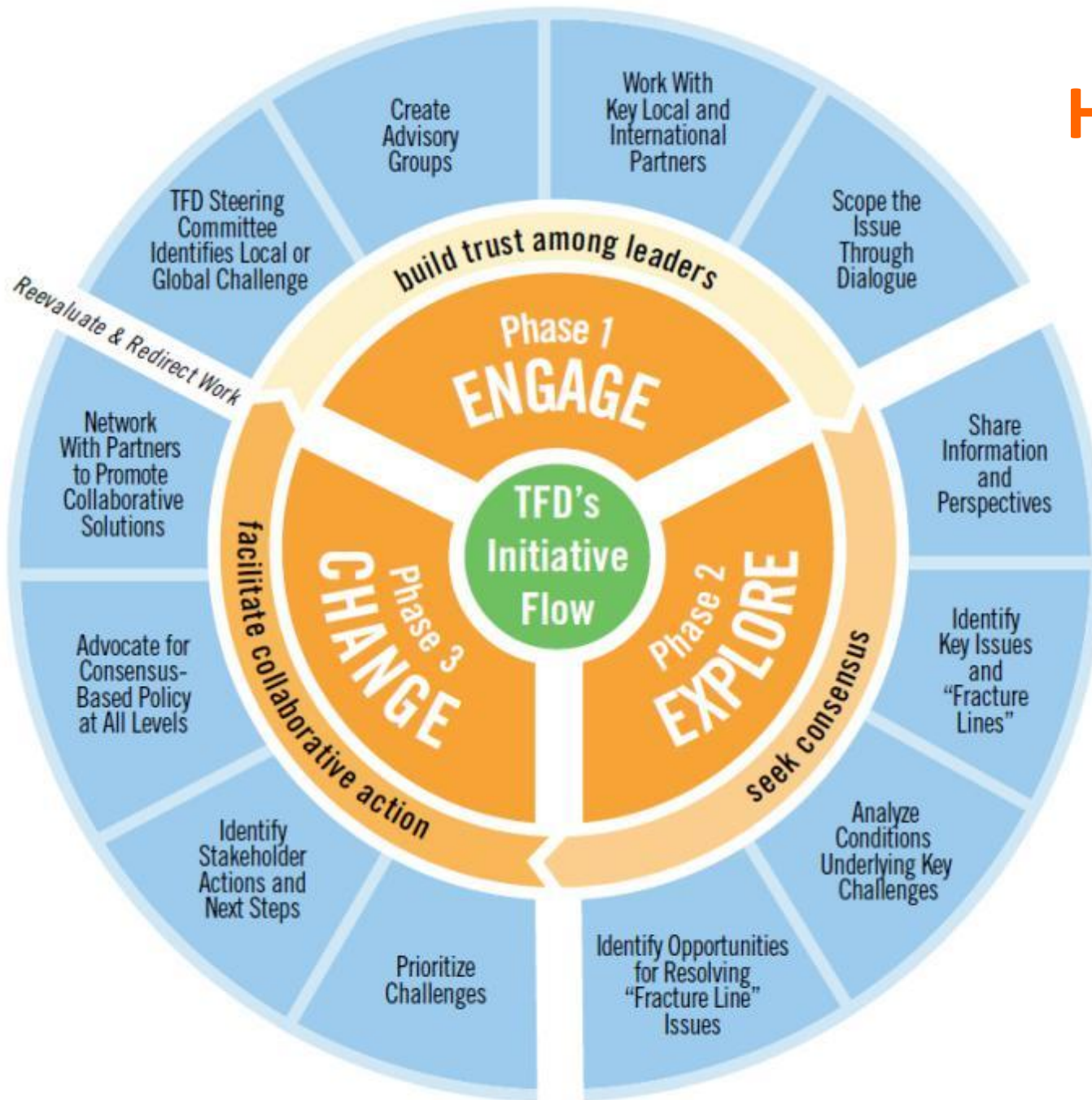
- Established in 2000 by NGO and Business Leaders
- Reduce conflict among stakeholders in the forest sector
- International platform and process to discuss key SFM and conservation issues
- Build mutual trust, enhanced understanding and commitment to change

Structure

- Steering Committee
- Secretariat
- Network of Partners



How TFD Works



TFD Initiatives

Priority SFM Issues

- Food, Fuel, Fiber and Forests
- REDD+ Benefit Sharing
- Genetically Modified Trees
- Free, Prior, and Informed Consent
- Investing in Locally Controlled Forestry
- Forests & Poverty Reduction and Rural Livelihoods
- Intensively Managed Planted Forests
- Illegal Logging and Forest Governance
- Forests and Biodiversity Conservation
- Forest Certification



TFD's Process

TFD Operates under the Chatham House Rule

"Participants are free to use the information received, but neither the identity nor the affiliation of the speaker(s), nor that of any other participant, may be revealed".

Ground Rules

- Use mobiles and computers during breaks
- No video
- Pictures OK
- Use Name Tents



TFD's Process

Spirit of Participation

- Active listening
- Constructive, solution oriented interventions
- Participate as individual
- Help define and own the outcomes
- Facilitation “light” / Co-Chair’s roles



The 4Fs Initiative

**Managing Landscapes for Food, Fuel, Fiber and Forests:
Seeking Innovative approaches in a time of
food insecurity and climate change**

Rod Taylor

WWF and TFD Co-Leader

Gary Dunning

The Forests Dialogue

4Fs Finland Dialogue

4 September – Punkaharju, Finland



A planet under pressure



One planet. The only
one we have.





A planet under pressure

We currently use natural resources as if we had 1.5 planets.





A planet under pressure

We'll need more than 2 planets by 2030 if we carry on as we are.





A planet under pressure

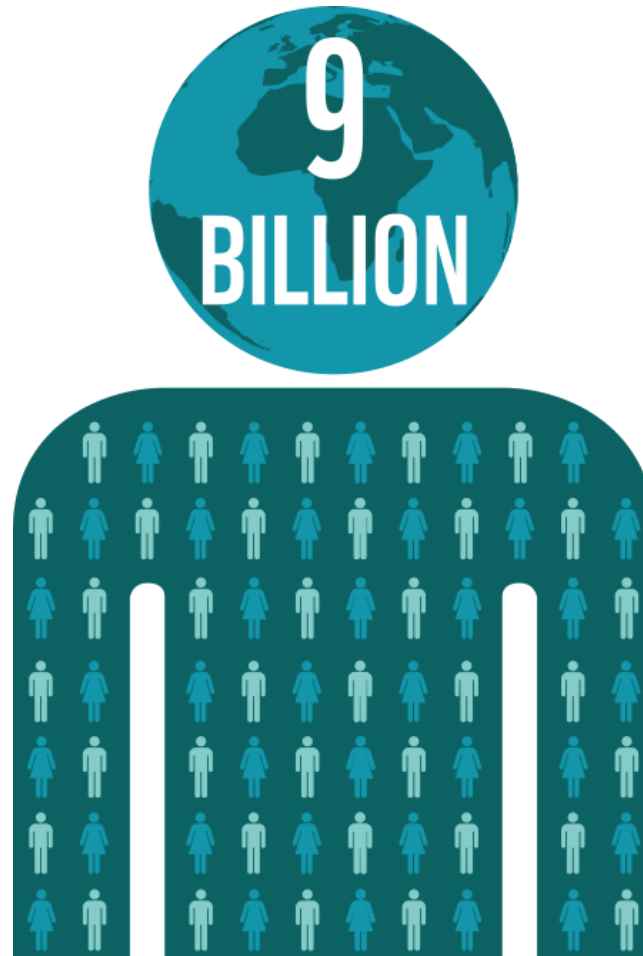
The world's population is set to grow from 7 billion today...





A planet under pressure

...to more than
9 billion by 2050.



A planet under pressure

Per capita income is set to rise by 290%...



global incomes will almost triple



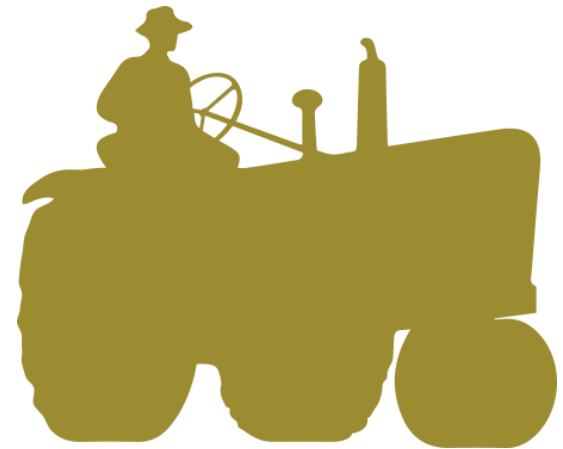
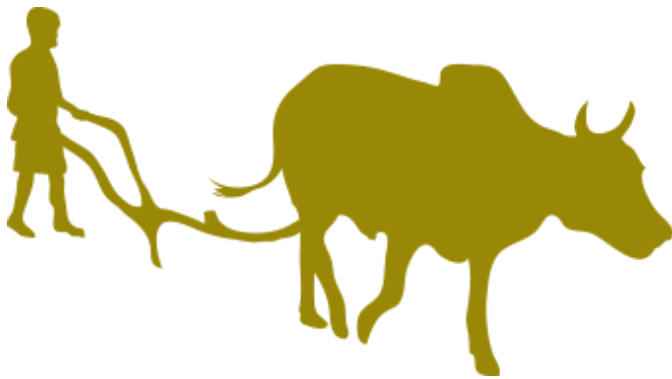
A planet under pressure

...leading to increased consumption.



A planet under pressure

Over the next 40 years, we'll need to produce as much food as we've done in the last 8,000 years of agriculture.





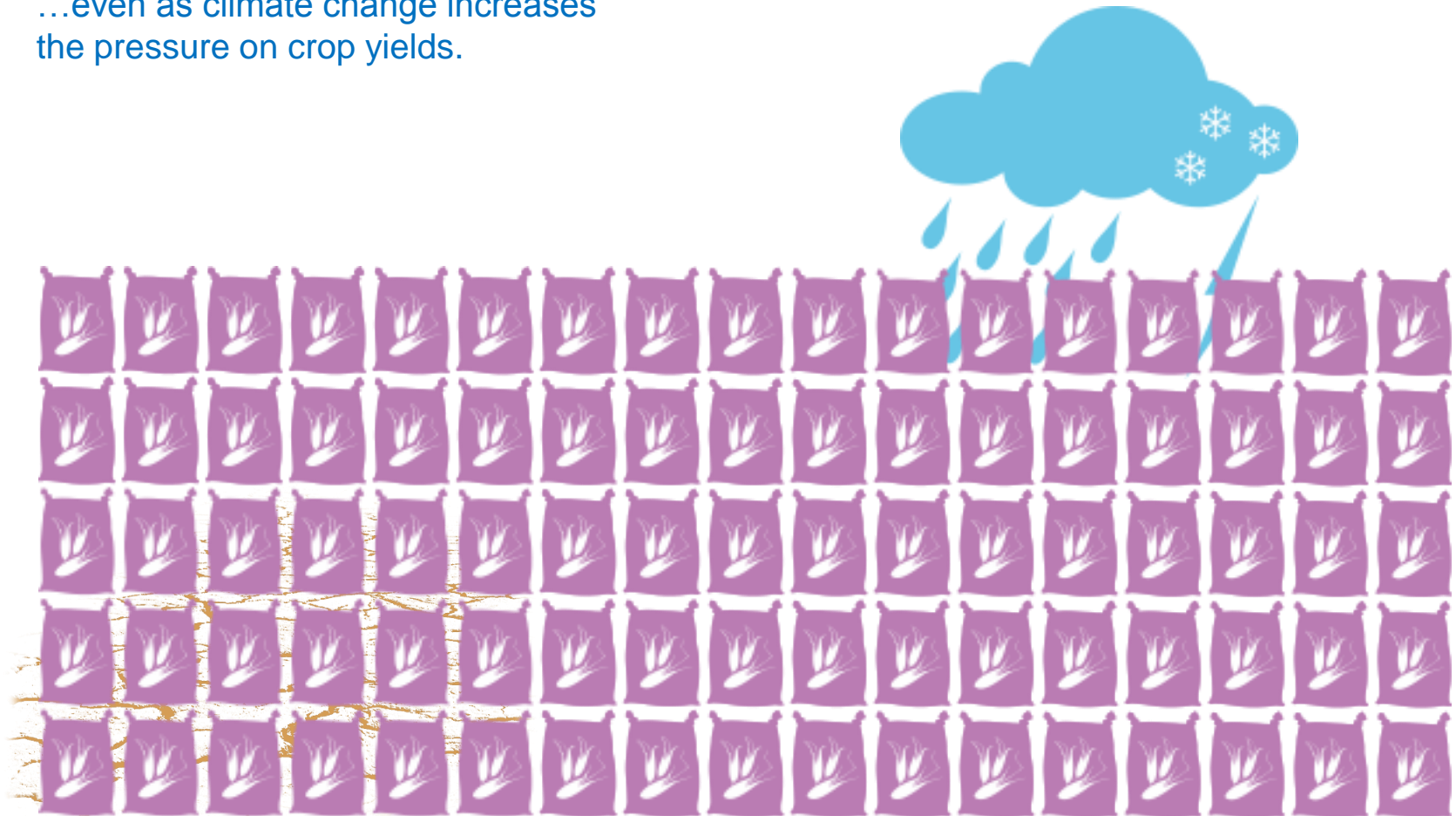
A planet under pressure

We need to expand global food production by 70%...



A planet under pressure

...even as climate change increases the pressure on crop yields.



A planet under pressure

By 2025, at least 3.5 billion people will live in water-stressed river basins.



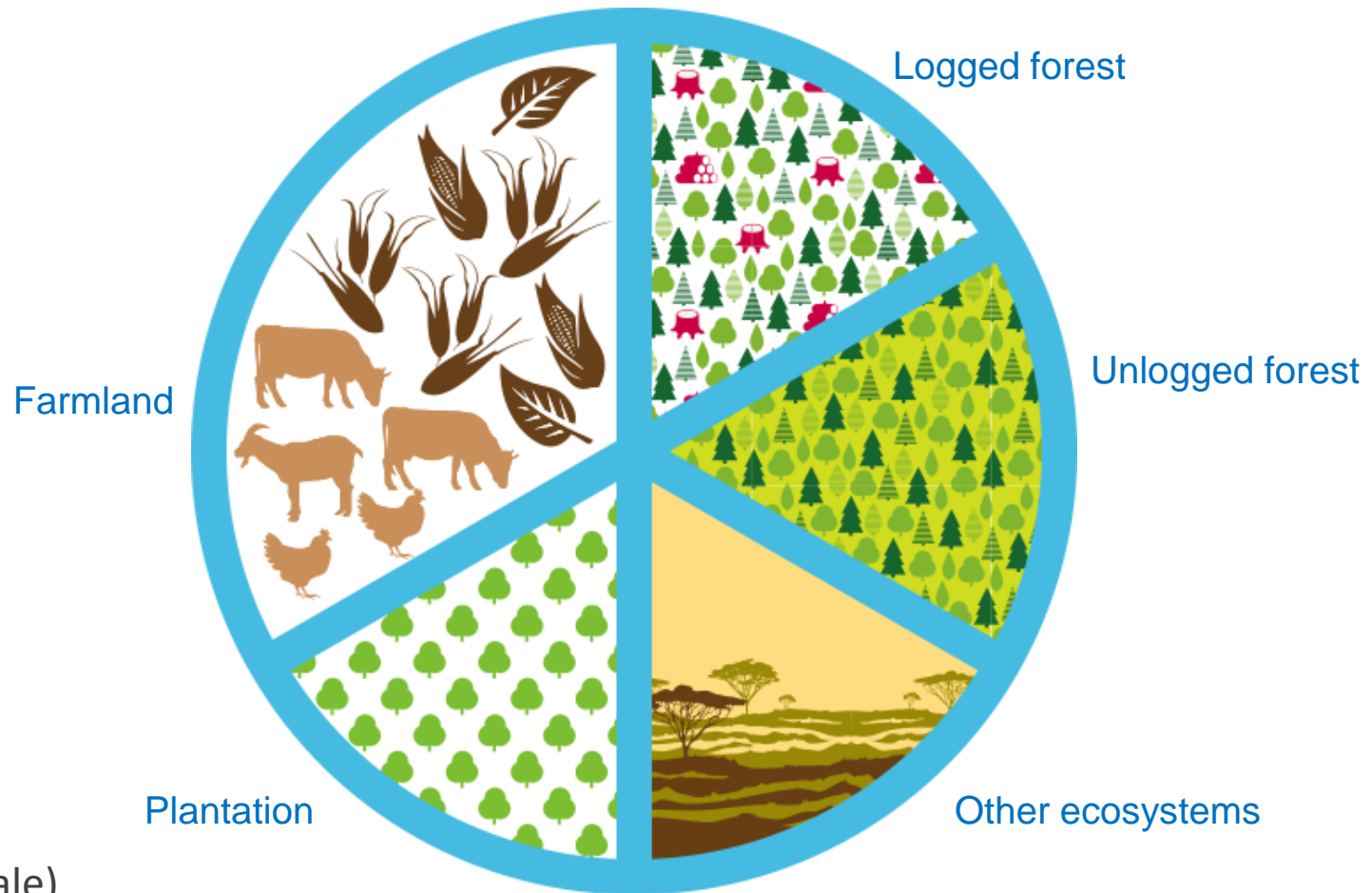
A planet under pressure

Biodiversity has declined by 30% since 1970, according to WWF's Living Planet Index.



A planet under pressure

TODAY



(not to scale)

The Big Squeeze

2050



High greenhouse gas emissions



Huge decline in biodiversity



REDD Success



2050



Food prices rise a little



Decline in grassland, shrubland biodiversity

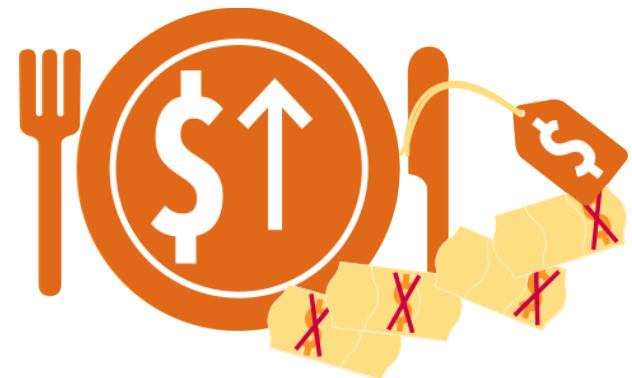


Strict Conservation

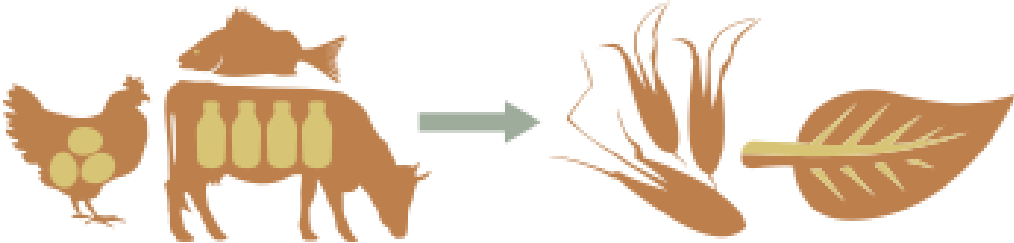


Farms and forests cannot meet projected global demand for food, timber and bioenergy.

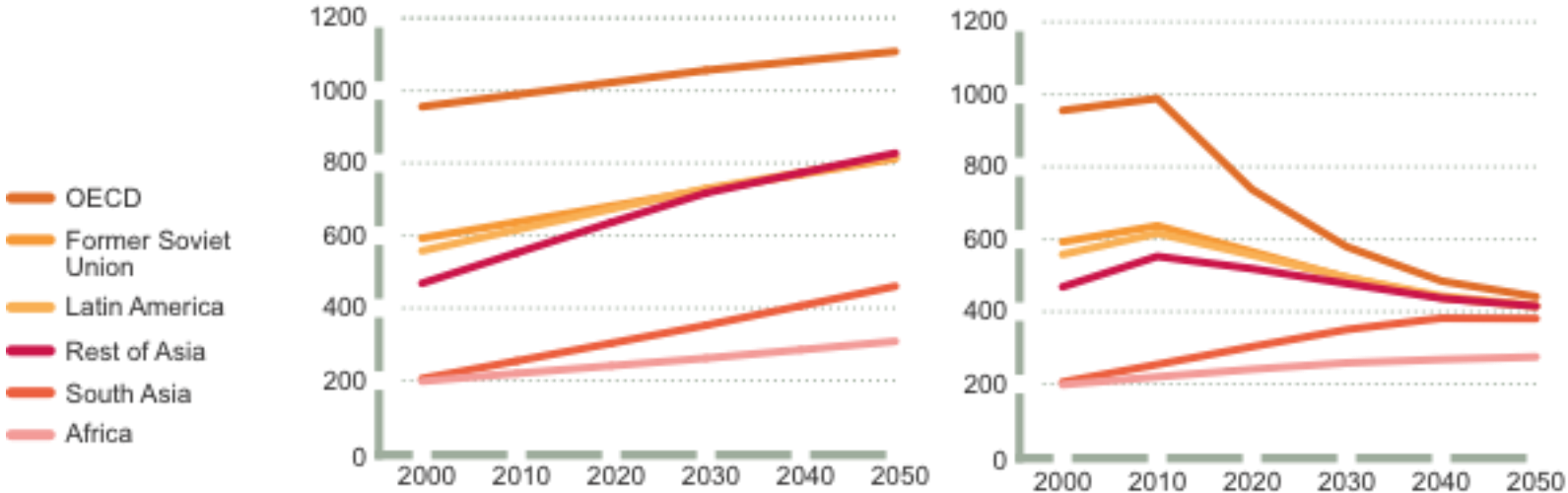
Food prices skyrocket.



Diet Shift



Per capita consumption of animal calories (kcal/cap/day)



Do Nothing scenario

Diet Shift scenario

Diet Shift



Food prices remain stable



More biodiversity protected in other ecosystems



Drivers of deforestation

	Livestock	Large scale agriculture *	Small scale agriculture and colonisation	Unsustainable logging	Pulp plantations	Fires	Charcoal and fuelwood	Mining	Infrastructure	Hydro-electric power
Brazilian Amazon										
Andean Amazon										
Choco-Darien										
Cerrado										
Atlantic Forest/ Gran Chaco										
Congo										
Coastal East Africa Forests										
Borneo										
Sumatra										
Greater Mekong										
New Guinea										

- Primary cause of deforestation and severe degradation
- Important secondary driver of deforestation and severe degradation
- Less important driver of deforestation and severe degradation
- Not a driver of deforestation and severe degradation

The 4Fs Challenge



- Agricultural expansion leading deforestation;
- Food security clashing with mitigation and conservation;
- Lack of engagement between land use interests and climate initiatives.

4Fs Initiative Targets

- Build cross-sectoral, multi-stakeholder platforms to drive innovative landscape approaches
- Identify best practice with landscape-level, land-use decision making
- Engage full commodity supply chain in creating a more landscape based approach
- **Greater coordination between interventions**



4Fs in Brazil



4Fs in Indonesia



Challenges – How to?



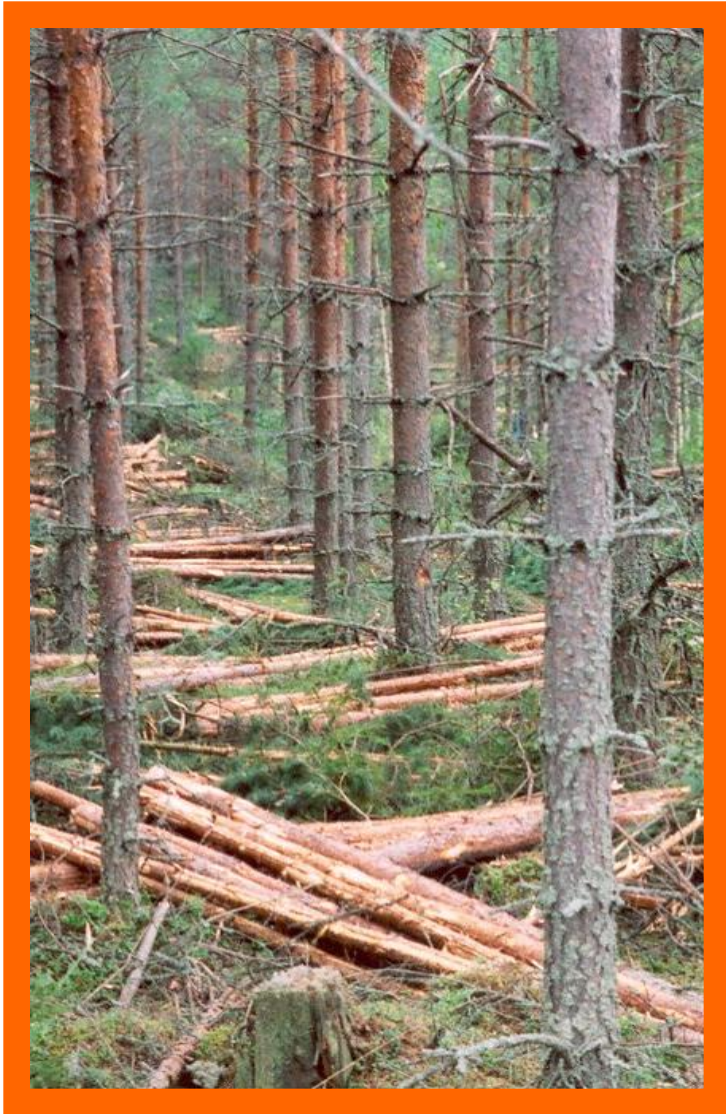
- intensify land-use without causing environmental or social harm?
- conduct integrated, participatory and rights-based land-use planning?
- better value ecosystem services when making land-use decisions?
- support family based sustainable farming?
- change consumption patterns?
- create international standards and policies that help?

Key Learnings

- Private sector engagement essential to integrated land-use approaches (ILU);
- Enabling conditions, such as access to capital for SMEs, participatory decision making or conducive public policies, support sustainable ILU;
- New partnerships across sectors and among stakeholders is needed to provide leadership and catalyze action.



“Landscapes Consortium”



- Projects established and managed in key landscapes
- Direct coordination with private sector via supply chain
- Tangible, measurable, implementable actions for impact on the ground and among Consortium partners
- Creation of ongoing engagement processes

Kiitos!

TFD Documents and Publications

Available electronically at:
www.theforestdialogue.org

 *Follow us on Twitter: @forestdialogue*

 *Like us on Facebook: the forests dialogue*

The Forests Dialogue
New Haven, CT, USA
+1 203 432 5966

info@theforestdialogue.org
www.theforestdialogue.org

