



The Forests Dialogue

Bioenergy From Forests - Pacific Northwest Field Dialogue

June 16-20, 2025





Welcome



Tonight's Agenda

Opening Presentations

- Welcome & Introduction
- TFD Intro & Dialogue Overview
- Background Paper Summary
- Field Visits Tour Review

Co-Chairs for the Dialogue



Virginia Dale
University of
Tennessee



Guen DiGioia
South Willamette
Solutions



Greg Houle
Sustainable
Northwest



Phil Rigdon
Yakama Nation
Dept of Natural
Resources

+ Support from the TFD and Sustainable Northwest Team (Gary, Steve, Jeremy, Thibault, Jane)

Initiative Advisory Group Members

- **Mark Ashton**, The Forest School at the Yale School of the Environment
- **Jamie Barbour**, US Forest Service
- **Ann Bartuska**, Resources for the Future & Environmental Defense Fund
- **Kyla Cheynet**, Drax Inc
- **Virginia Dale**, University of Tennessee
- **Sabina Dhungana**, US Forest Service
- **Matt Donegan**, Donegan Advisors
- **Zander Evans**, Forest Stewards Guild
- **Alice Favero**, Georgia Tech
- **Jason Funk**, Conservation International
- **Brad Gentry**, Yale School of the Environment
- **Carsten Huljus**, Sustainable Biomass Program
- **Yuuko Iizuka**, Sumitomo
- **Sara Kuebbing**, Yale Applied Science Synthesis Program
- **Jonathan Kusel**, Sierra Institute
- **Will Martin**, American Forest Foundation
- **Amanda Sullivan-Astor**, Association of Oregon Loggers
- **Phil Rigdon**, Yakama Nation Dept of Natural Resources
- **Steve Rigdon**, Sustainable Northwest
- **Laurie Wayburn**, Pacific Forest Trust

Participant Introductions



- Name
- Organization
- Location
- Expectations



The Forests Dialogue (TFD) and the BEF Initiative Overview

TFD Origins

Established in 2000 by NGO and Business Leaders in order to:

- **Reduce conflict** among stakeholders;
- Create an independent **international platform and process** to discuss key SFM and conservation issues;
- Build **mutual trust** and enhanced understanding and commitment to change.



TFD By The Numbers



TFD by the Numbers

- 1st dialogue in 2002 on Forest Certification
- 25 Initiatives
- 104 Dialogues
- 36 Countries
- 3000+ Stakeholders
- 100+ Publications
- 1 Website: theforestdialogue.org

• 100+ Publications

TFD Initiatives 2000-2025

- **Bioenergy from Forests**
- **Ecosystem Restoration**
- **Tree Plantations in the Landscape**
- **Land Use Dialogues**
- Mass Timber
- Understanding Deforestation Free
- Genetically Modified Trees
- REDD+ Initiatives (4 total)
- Food, Fuel, Fiber, Forests
- Free Prior and Informed Consent
- Investing in Locally Controlled Forestry
- Forests and Poverty Reduction in Rural Livelihoods
- Intensively Managed Planted Forests
- Illegal Logging and Forest Governance
- Forests and Biodiversity Conservation
- Forest Certification



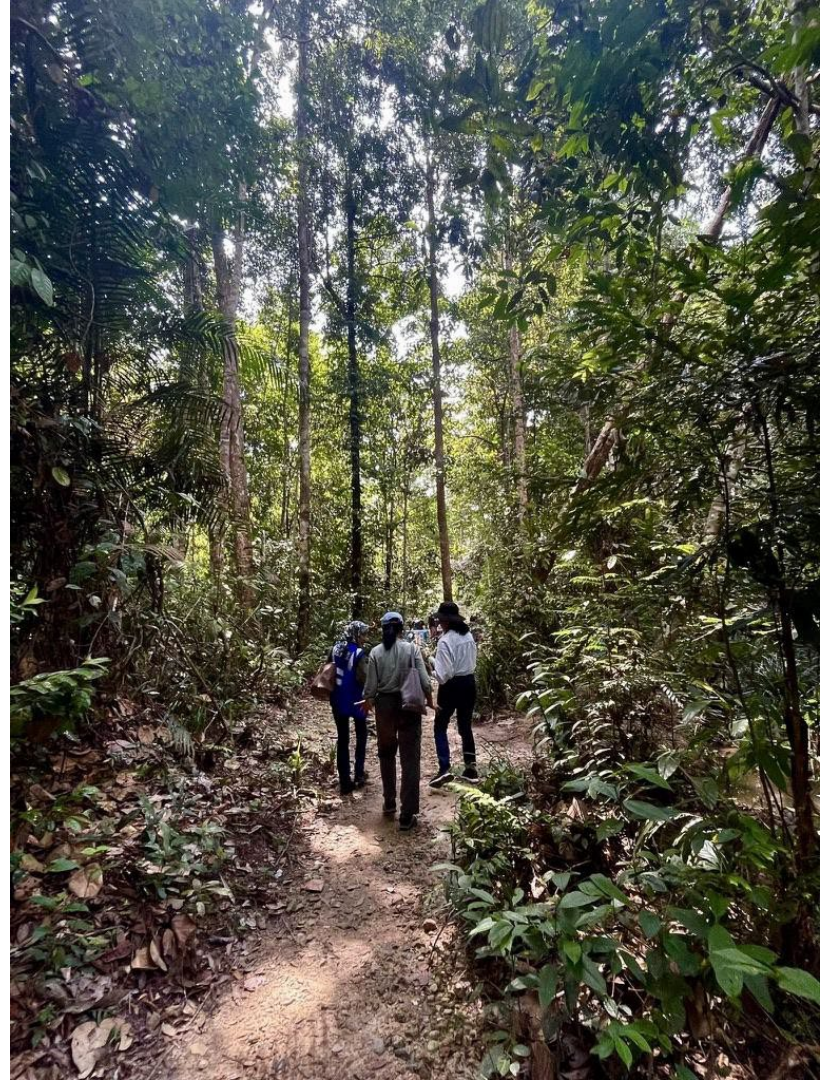
TFD Ground Rules

TFD uses the Chatham House Rule:

“Participants are free to use the information received, but neither the identity nor the affiliation of the speaker(s), nor that of any other participant, may be revealed.”

Also please:

- Engage in the “spirit of dialogue”
- Practice active listening
- Participate as individual
- Take space, make space
- Help define and own the outcomes
- Use name tent in plenary





BEF Initiative Summary to Date

Dialogue Goals

- Gain a deeper understanding of stakeholder views
- Create larger learnings for informed policy
- Generate global-scale insights
- Catalyze stakeholder-led action and collaboration



Process so Far – Focus Groups

Virtual – Summer 2023

Areas of Agreement

- The urgency of climate change motivates engagement on BEF
- BEF can be used for wildfire mitigation
- BEF should be understood within the context of forest product supply chains and markets

Areas for Further Discussion

- Better understand the sustainability of biomass for BEF & different interpretations of sustainability
- Clarify community risks and benefits
- Suggestions and cautions for regulatory and market mechanisms for BEF
- Explore appropriate uses for biomass, energy sources, and carbon-capture technology
- Need to be inclusive of non-research participants and desire to hear from critics of BEF, engaging communities and learn about environmental justice concerns directly

Process so Far

– Scoping dialogue

New Haven, CT – February 2024

Key Learnings:

- Social License and Environmental Justice Are Critical for Bioenergy Acceptance
- Quantifying Climate Benefits of Bioenergy Remains a Challenge
- Competing Demands for Land and Biomass Affect Bioenergy Viability
- Regional Differences Shape Bioenergy Opportunities and Challenges
- Infrastructure and Workforce Development Are Essential for Scaling Bioenergy



For More on TFD

TFD Videos



Available at: www.youtube.com/user/TheForestsDialogue

TFD Documents and Publications



Available at: www.theforestsdialogue.org



Follow us on Twitter: [@forestsdialogue](https://twitter.com/forestsdialogue)



Like us on Facebook: [the forests dialogue](https://www.facebook.com/the-forests-dialogue)



Email us at: info@theforestsdialogue.org

TFD Address and Phone

The Forests Dialogue

Yale University

360 Prospect Street

New Haven, CT, USA 06511

+1 203 432 5966

